

# Actuate One™

One Design  
One Server  
One User Experience

**Installing BIRT Spreadsheet  
Engine and API**

Information in this document is subject to change without notice. Examples provided are fictitious. No part of this document may be reproduced or transmitted in any form, or by any means, electronic or mechanical, for any purpose, in whole or in part, without the express written permission of Actuate Corporation.

© 1995 - 2011 by Actuate Corporation. All rights reserved. Printed in the United States of America.

Contains information proprietary to:  
Actuate Corporation, 2207 Bridgepointe Parkway, San Mateo, CA 94404

[www.actuate.com](http://www.actuate.com)  
[www.birt-exchange.com](http://www.birt-exchange.com)

The software described in this manual is provided by Actuate Corporation under an Actuate License agreement. The software may be used only in accordance with the terms of the agreement. Actuate software products are protected by U.S. and International patents and patents pending. For a current list of patents, please see <http://www.actuate.com/patents>.

Actuate Corporation trademarks and registered trademarks include: Actuate, ActuateOne, the Actuate logo, BIRT, Collaborative Reporting Architecture, e.Analysis, e.Report, e.Reporting, e.Spreadsheet, Encyclopedia, Interactive Viewing, OnPerformance, Performancesoft, Performancesoft Track, Performancesoft Views, Report Encyclopedia, Reportlet, The people behind BIRT, and XML reports.

Actuate products may contain third-party products or technologies. Third-party trademarks or registered trademarks of their respective owners, companies, or organizations include:

Adobe Systems Incorporated: Flash Player. Apache Software Foundation ([www.apache.org](http://www.apache.org)): Axis, Axis2, Batik, Batik SVG library, Commons Command Line Interface (CLI), Commons Codec, Derby, Shindig, Struts, Tomcat, Xerces, Xerces2 Java Parser, and Xerces-C++ XML Parser. Bits Per Second, Ltd. and Graphics Server Technologies, L.P.: Graphics Server. Bruno Lowagie and Paulo Soares: iText, licensed under the Mozilla Public License (MPL). Castor ([www.castor.org](http://www.castor.org)), ExoLab Project ([www.exolab.org](http://www.exolab.org)), and Intalio, Inc. ([www.intalio.org](http://www.intalio.org)): Castor. Codejock Software: Xtreme Toolkit Pro. DataDirect Technologies Corporation: DataDirect JDBC, DataDirect ODBC. Eclipse Foundation, Inc. ([www.eclipse.org](http://www.eclipse.org)): Babel, Data Tools Platform (DTP) ODA, Eclipse SDK, Graphics Editor Framework (GEF), Eclipse Modeling Framework (EMF), and Eclipse Web Tools Platform (WTP), licensed under the Eclipse Public License (EPL). Jason Hsueth and Kenton Varda ([code.google.com](http://code.google.com)): Protocole Buffer. ImageMagick Studio LLC.: ImageMagick. InfoSoft Global (P) Ltd.: FusionCharts, FusionMaps, FusionWidgets, PowerCharts. Mark Adler and Jean-loup Gailly ([www.zlib.net](http://www.zlib.net)): zlib. Matt Ingenthron, Eric D. Lambert, and Dustin Sallings ([code.google.com](http://code.google.com)): Spymemcached, licensed under the MIT OSI License. International Components for Unicode (ICU): ICU library. KL Group, Inc.: XRT Graph, licensed under XRT for Motif Binary License Agreement. LEAD Technologies, Inc.: LEADTOOLS. Microsoft Corporation (Microsoft Developer Network): CompoundDocument Library. Mozilla: Mozilla XML Parser, licensed under the Mozilla Public License (MPL). MySQL Americas, Inc.: MySQL Connector. Netscape Communications Corporation, Inc.: Rhino, licensed under the Netscape Public License (NPL). Oracle Corporation: Berkeley DB. PostgreSQL Global Development Group: pgAdmin, PostgreSQL, PostgreSQL JDBC driver. Rogue Wave Software, Inc.: Rogue Wave Library SourcePro Core, tools.h++. Sam Stephenson ([prototype.conio.net](http://prototype.conio.net)): prototype.js, licensed under the MIT license. Sencha Inc.: Ext JS. Sun Microsystems, Inc.: JAXB, JDK, Jstl. ThimbleWare, Inc.: JMemcached, licensed under the Apache Public License (APL). World Wide Web Consortium (W3C)(MIT, ERCIM, Keio): Flute, JTI, Simple API for CSS. XFree86 Project, Inc.: ([www.xfree86.org](http://www.xfree86.org)): xvfb.

All other brand or product names are trademarks or registered trademarks of their respective owners, companies, or organizations.

Document No. 110303-2-963510 March 1, 2011

# Contents

<b>Introduction</b> .....	<b>.iii</b>
Understanding ActuateOne .....	iii
About the Actuate BIRT Spreadsheet Engine and API documentation .....	iii
Obtaining documentation .....	v
Using PDF documentation .....	v
Obtaining late-breaking information and documentation updates .....	v
About obtaining technical support .....	vi
About supported and obsolete products .....	vi
Typographical conventions .....	vi
Syntax conventions .....	vii
<b>Installing BIRT Spreadsheet Engine and API</b> .....	<b>1</b>
About Actuate BIRT Spreadsheet Engine and API .....	2
Working with Actuate licensing .....	2
Obtaining the BIRT Spreadsheet Engine and API license key file .....	2
Installing BIRT Spreadsheet Engine and API .....	3
Installing the Actuate BIRT Spreadsheet Engine and API license key .....	3
Installing BIRT Spreadsheet Designer .....	4
Uninstalling BIRT Spreadsheet Designer .....	10
Configuring memory usage for BIRT Spreadsheet Designer .....	10
<b>Index</b> .....	<b>13</b>



---

## Understanding ActuateOne

ActuateOne™ includes Release 11 of Actuate® Corporation's value-added products for the Eclipse BIRT open source project. ActuateOne institutes a paradigm shift in Business Intelligence technology from individualized tools to a suite of integrated capabilities within a single environment. ActuateOne is one designer, one server, one integrated environment providing a single unified user experience. A common architecture is precisely what today's information-rich global environment requires for development and deployment. This unified Actuate technology continues to enable information management and delivery while supporting advanced security, massive scalability, flexibility through programming, and reuse. ActuateOne realizes our corporate vision of a single user experience by providing extended new analytics capabilities reaching a broader spectrum of users. The new dashboard functionality supports building gadgets to enhance the visual presentation of information. Export to Excel® and other formats integrates Actuate output with other tools on the end-user desktop. Actuate's cloud-ready server supports elastic clustering for dynamic provision of uninterrupted efficient service.

Information, live demos, and endorsements about this release are available from [birt-exchange.com](http://birt-exchange.com) and [actuate.com](http://actuate.com). The Actuate site also makes "The Forrester Wave™: Open Source Business Intelligence (BI), Q3 2010" report freely available. The report recognizes Actuate and its value-added offerings for BIRT as a leader in Open Source Business Intelligence.


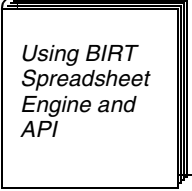
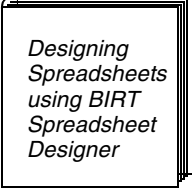
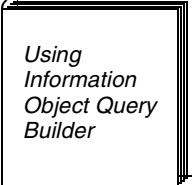
---

## About the Actuate BIRT Spreadsheet Engine and API documentation

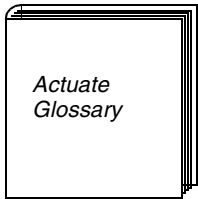
The printed and online documentation includes the materials described in Table I-1. You can obtain HTML and PDF files from the BIRT Exchange or Actuate

Customer Support site. Documentation updates are created in response to customer requirements and are available at both sites.

**Table I-1** Product documentation

<b>For information about this topic</b>	<b>See the following resource</b>
Late-breaking information and documentation updates	Release notes and updated localization, HTML help, and PDF files posted on <a href="http://birt-exchange.com">birt-exchange.com</a> and Actuate Support
Installing Actuate BIRT Spreadsheet Engine and API Installing and configuring Actuate BIRT Spreadsheet Designer	
Overview of classes Integrating BIRT Spreadsheet technology into applications, applets, and servlets Guide to programming with the API Using custom JSP tags to insert spreadsheets into web pages	
Designing and publishing spreadsheet reports using BIRT Spreadsheet Designer Overview of data access concepts Accessing data from databases, other JDBC data sources, text files, and custom data sources Importing, formatting, and manipulating data Using callback classes and VBA code Adding security features	
Accessing data from Actuate information objects Actuate SQL reference	

**Table I-1** Product documentation

For information about this topic	See the following resource
Glossary	 An icon of a book with the title "Actuate Glossary" written on its cover. The book is shown from a three-quarter perspective, with the spine on the right side.

## Obtaining documentation

Actuate provides technical documentation in PDF, HTML, and print formats. Actuate products access HTML-format documentation from the Actuate web site. If you do not have web access or prefer to use documentation hosted on your local system, install the documentation from the Online Documentation and Localization Resource Files DVD or ftp package. You can download PDF or view HTML versions of the documentation from [birt-exchange.com](http://birt-exchange.com). If you purchase the product, you can also download documentation using ftp as instructed in the e-mail from Actuate Distribution.

If you request a physical package, install the files using the Online Documentation and Localization Resource Files DVD, which ships as part of your Actuate software package. If you select the typical setup when you install from the DVD, the installation creates the `Actuate11\Manuals` directory.

## Using PDF documentation

In each book, the table of contents and the index page numbers contain links to the corresponding topics in the text. In the table of contents, you access the link by positioning the pointer over the topic. In the index, you access the link by positioning the pointer over the page number.

The `Actuate11\Manuals` directory contains a file, `master-index.pdx`, which is an Adobe Acrobat Catalog utility that can search all the documents in the Actuate Manuals directory. This tool provides a convenient way to find information on a particular topic in Actuate documentation.

## Obtaining late-breaking information and documentation updates

The release notes contain late-breaking news about Actuate products and features. The release notes are available on the Actuate Support site at the following URL:

<http://support.actuate.com/documentation/releasenotes>

Updates to documentation in PDF form are available at the following URL:

<http://support.actuate.com/documentation>

A new user must first register on the site and log in before viewing these pages.

Birt-exchange.com and actuate.com also provide product update information. To download updated product documentation, use the following URL:

<http://www.actuate.com/docupdate11sp1/docupdate.html>

Alternatively, after installing Actuate release 11 products, use Start→Programs→Actuate 11→Update Documentation to access this URL.

---

## About obtaining technical support

You can contact customer support by e-mail or telephone. For contact information, go to the following URL:

<http://www.actuate.com/services/support/contact-support/>

---

## About supported and obsolete products

The Actuate Support Lifecycle Policy and Supported Products Matrix are available on the Actuate Support web site at the following URL:

<http://support.actuate.com/documentation/spm>

---

## Typographical conventions

Table I-2 describes the typographical conventions in this document.

**Table I-2** Typographical conventions

Symbol	Description	Example
Code examples	Monospace	Dim Text1 As String
File names	Initial capital letter, except where file names are case-sensitive	Detail.roi
Key combination	A + sign between keys means to press both keys at the same time	Ctrl+Shift
Menu items	Capitalized, no bold	File
Submenu items	Separated from the main menu item with a small arrow	File→New



**Table I-2**      Typographical conventions

Symbol	Description	Example
User input or user response	Monospace	M*16*
User input in XML and Java code	Monospace italics	chkjava.exe cab_name.cab

---

## Syntax conventions

Table I-3 describes the symbols used to present syntax..

**Table I-3**      Syntax conventions

Item	Description	Example
[ ]	Optional item Array subscript	[Alias<alias name>] matrix[ ]
{ }	Groups two or more mutually exclusive options or arguments when used with a pipe Defines array contents	{While   Until} {0, 1, 2, 3}
	Delimiter of code block Separates mutually exclusive options or arguments in a group	public myClass( ){ } Exit {Do   For   Function   Sub}
< >	Java OR operator Argument you must supply Delimiter in XML	int length   4 <expression to format> <xsd:sequence>



# Installing BIRT Spreadsheet Engine and API

---

This chapter contains the following topics:

- About Actuate BIRT Spreadsheet Engine and API
- Working with Actuate licensing
- Obtaining the BIRT Spreadsheet Engine and API license key file
- Installing BIRT Spreadsheet Engine and API
- Installing the Actuate BIRT Spreadsheet Engine and API license key
- Installing BIRT Spreadsheet Designer
- Configuring memory usage for BIRT Spreadsheet Designer

---

## About Actuate BIRT Spreadsheet Engine and API

Actuate BIRT Spreadsheet Engine and API is a collection of Java APIs that can be used in an application to create and deploy spreadsheet reports. You can use BIRT Spreadsheet Designer to create worksheets and report designs for your BIRT Spreadsheet Engine applets, applications, or servlets. For information about the files that BIRT Spreadsheet Engine and API installs, see *Using BIRT Spreadsheet Engine and API*.

---

## Working with Actuate licensing

Actuate licensing supports running applications that use the BIRT Spreadsheet Engine and API that is contained in the Java library (.jar) file, `essd11.jar`. When you first install BIRT Spreadsheet Engine and API, you can use the Engine for a built-in trial period. This period expires on a pre-defined date. To continue to use the full capabilities of the Engine, you must install the BIRT Spreadsheet Engine and API license key file. To ensure uninterrupted use of the Engine, you can install this license key file at any time during the trial period. Without a license, you can only use the BIRT Spreadsheet API to access Microsoft Excel workbooks.

BIRT Spreadsheet Engine and API requires a valid license key in any deployment environment. If the license file does not exist or is invalid, BIRT Spreadsheet Engine and API writes an error to the diagnostic log file. The application loads, but any attempt to use an BIRT Spreadsheet Engine and API class results in an error. The optional tool, BIRT Spreadsheet Designer, does not require a license.

---

## Obtaining the BIRT Spreadsheet Engine and API license key file

New customers receive an e-mail that contains license key file information when Actuate processes the order. If you have a problem with a license key file, contact Actuate Customer Care at [customer care@actuate.com](mailto:customer care@actuate.com). If you are an Actuate international customer, please be aware that the e-mail message goes to Actuate headquarters, and we forward your request to a team in the appropriate country. To obtain a new file for licensed products, visit the Support web site at:

<http://support.actuate.com>

A maintenance customer should have login information for the Actuate Support web site. If you do not have access, please contact Actuate Support at [support@actuate.com](mailto:support@actuate.com). If you are not a direct Actuate customer, the partner or distributor who provides the product arranges for your license key file. If you

have a problem obtaining your license key file, please contact Actuate Customer Care at [customercare@actuate.com](mailto:customercare@actuate.com).

---

## Installing BIRT Spreadsheet Engine and API

To install BIRT Spreadsheet Engine and API, you extract the engine libraries and supporting examples and documentation from an archive file.

### How to install BIRT Spreadsheet Engine and API on Windows and UNIX systems

- 1 Insert the product DVD.
- 2 Navigate to the BIRT Spreadsheet Engine and API directory.
- 3 To extract the BIRT Spreadsheet Engine and API files:

- On a Linux or UNIX system, use the following command to unpack the `ess.tar.gz` file:

```
tar zxvf ess.tar.gz
```

- On a Windows system, double-click the following file:

```
ActuateBIRTSpreadsheetEngine.zip
```

Using winzip, extract all files to a local directory. For example, use

```
C:\ProgramFiles\Actuate11
```

The extraction process installs the BIRT Spreadsheet Engine and API and documentation in the following folder:

```
\spreadsheetengineandapi
```

The documentation includes online help and PDF files of the product manuals.

You can now begin using the product.

---

## Installing the Actuate BIRT Spreadsheet Engine and API license key

You receive the Actuate BIRT Spreadsheet Engine and API license key from Actuate Licensing when you purchase the product. The name for an Actuate BIRT Spreadsheet Engine and API license key file is

```
eslicense.xml
```

The name of the file that Actuate sends you in an e-mail is

```
eslicense.xml.txt
```

You must remove the .txt extension from the file before you use it.

### **How to install the BIRT Spreadsheet Engine and API license key in an application development environment**

For information about providing the license key in deployment environments, see the appropriate chapters in *Using BIRT Spreadsheet Engine and API*.

- 1 Save the eselicense.xml.txt file onto your local system as eselicense.xml.
- 2 Optionally, put eselicense.xml into a Java archive (JAR) file.
- 3 Add the folder or JAR file that contains the eselicense.xml file to the classpath.

---

## **Installing BIRT Spreadsheet Designer**

You install BIRT Spreadsheet Designer using the installation wizard. The installation wizard:

- Prompts you to set the install location
- Copies BIRT Spreadsheet Designer program to the install location
- Creates icons in the Start menu for BIRT Spreadsheet Designer

### **How to install on supported Microsoft Windows systems**

To evaluate BIRT Spreadsheet Designer, go to the following location to download the installation executable file: <http://www.birt-exchange.com>

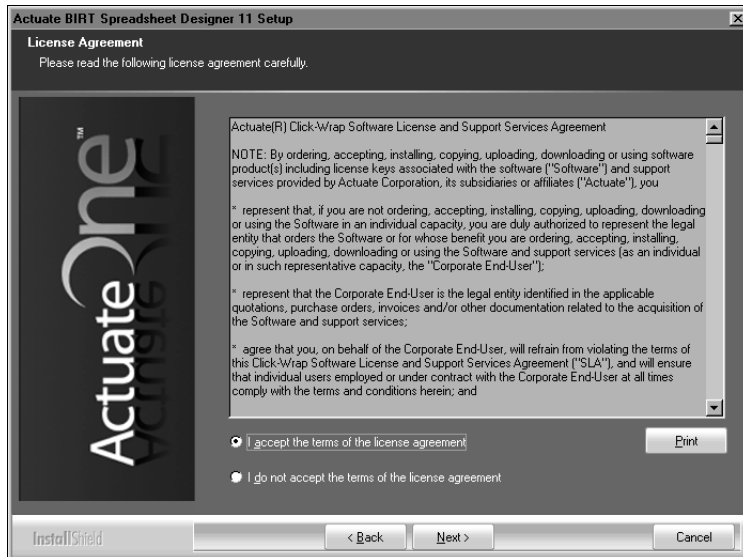
Save the file to your computer. Alternatively, you can run the installation program directly from the BIRT exchange web site. If you are a purchasing customer, you can download BIRT Spreadsheet Designer from an Actuate ftp site or install from a product DVD. To install BIRT Spreadsheet Designer, perform the following tasks:

- 1 If you downloaded BIRT Spreadsheet Designer, run the ActuateBIRTSpreadsheetDesigner.exe file. If you have a DVD or ftp distribution, run setup.exe in the BIRT Spreadsheet Designer directory. A welcome message appears, as shown in Figure 1-1. Choose Next.



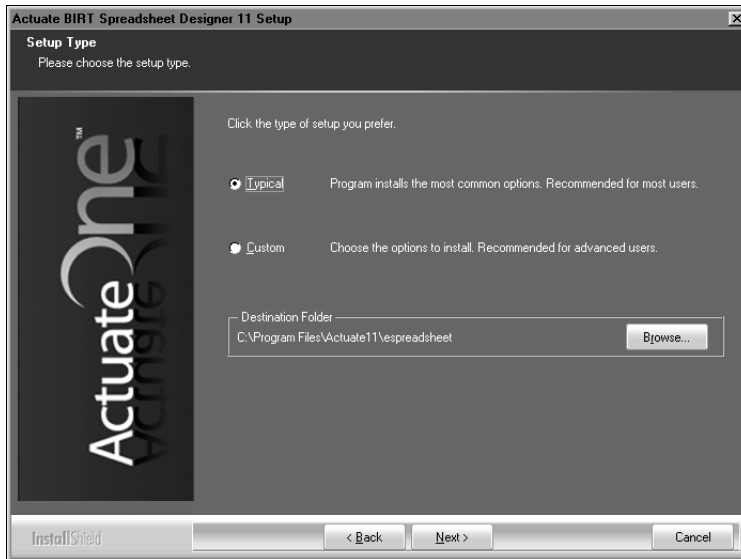
**Figure 1-1** Welcome message

- 2 Read and accept the license agreement, as shown in Figure 1-2. Choose Next.



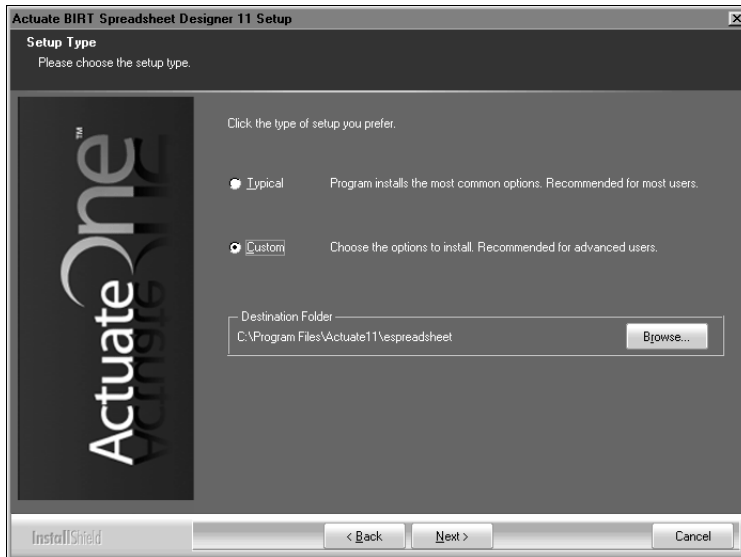
**Figure 1-2** Accepting the license agreement

- 3 Accept the default destination folder, C:\Program Files\Actuate11\spreadsheet, as shown in Figure 1-3. Select Typical, then choose Next.



**Figure 1-3** Choosing the destination folder in setup type

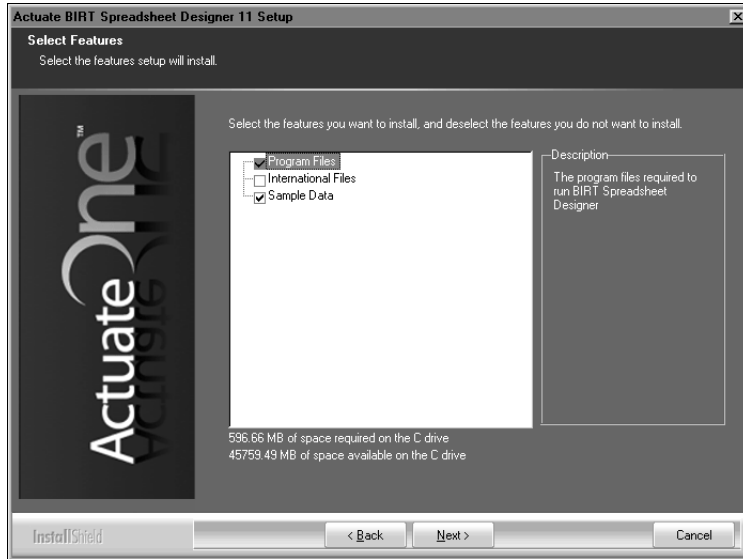
Alternatively, to install specific features, select Custom, then choose Next, as shown in Figure 1-4.



**Figure 1-4** Specifying a custom installation

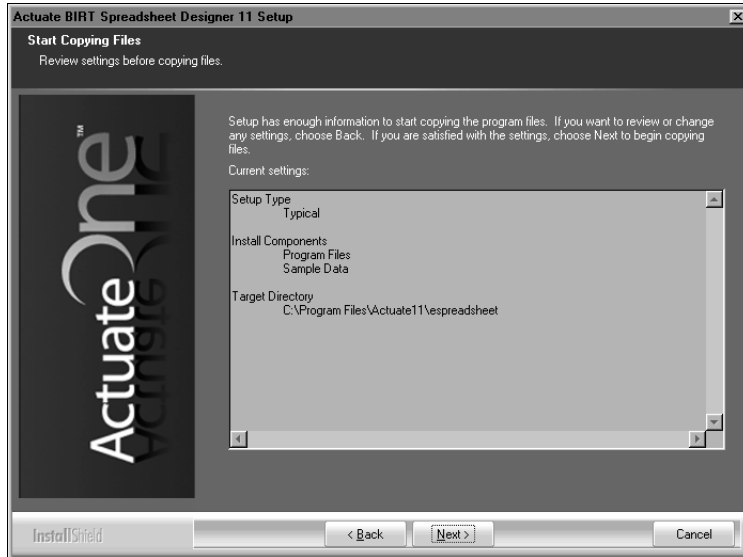
If customizing your installation, select features to install, as shown in Figure 1-5, then choose Next.





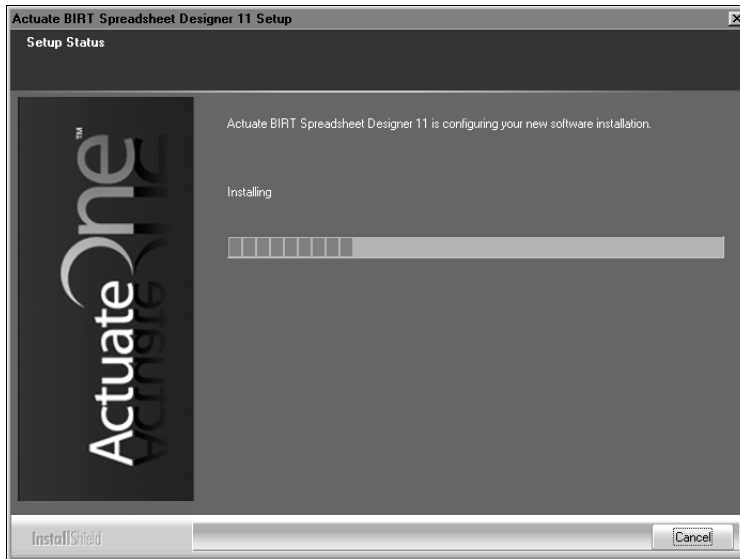
**Figure 1-5** Selecting features to install

- 4 In Start Copying Files, review installation settings. To change settings, choose Back. To start copying files, choose Next, as shown in Figure 1-6.



**Figure 1-6** Reviewing installation settings

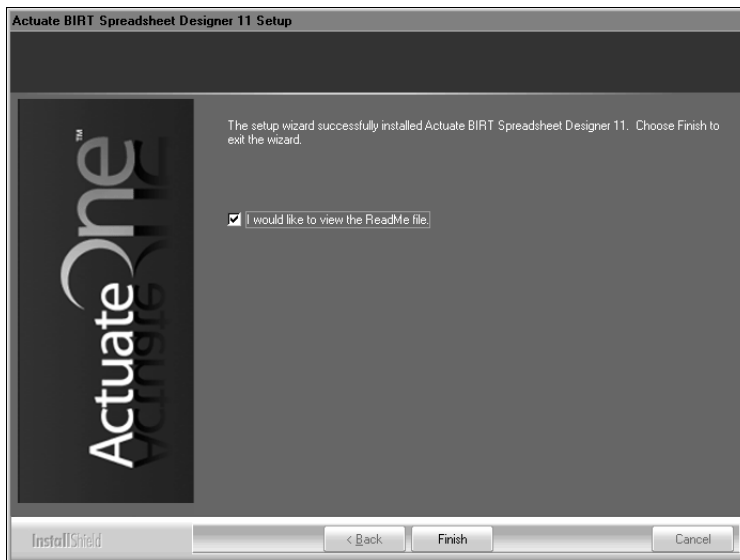
- 5 Setup Status displays the install progress as shown in Figure 1-7. To stop the installation, choose Cancel.



**Figure 1-7** Monitoring installation progress

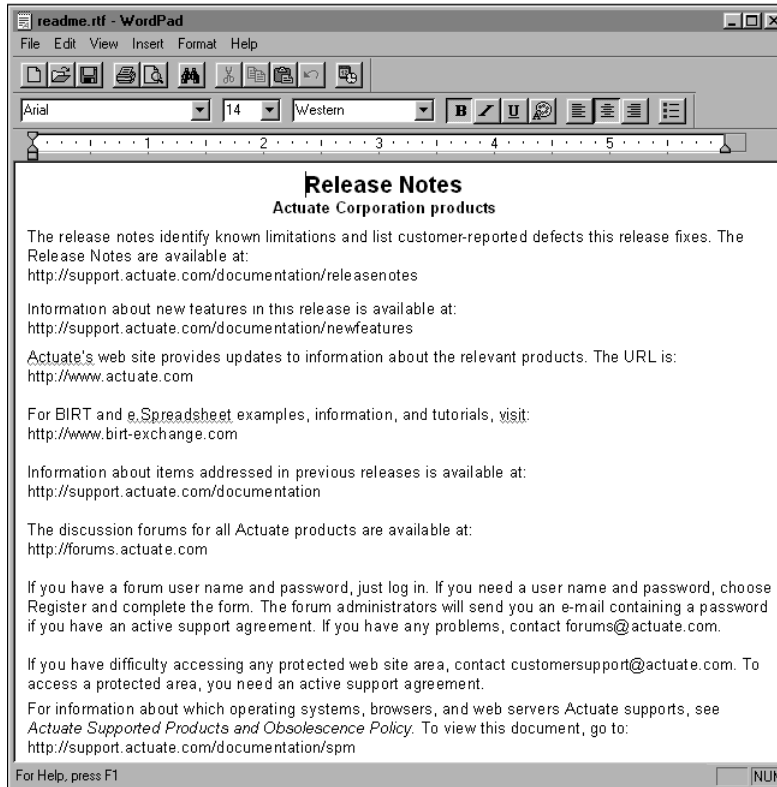
- 6 When installation progress completes, a message that BIRT Spreadsheet Designer installed successfully appears, as shown in Figure 1-8. To prevent the Readme.rtf file from appearing, deselect the Readme option.

To exit the installation wizard, choose Finish.



**Figure 1-8** Exiting the installation wizard

If you choose Finish without deselecting the Readme file option, the Readme.rtf file appears, as shown in Figure 1-9.



**Figure 1-9** Viewing release notes in the readme.rtf file

The installation program installs the BIRT Spreadsheet Designer icon on the Start menu, as shown in Figure 1-10.



**Figure 1-10** BIRT Spreadsheet Designer icon

### How to specify running BIRT Spreadsheet Designer as an administrator on Windows Vista

- 1 In Windows Explorer, navigate to and select the BIRT Spreadsheet Designer executable file. The default installation location for the file is `\Program Files\Actuate11\espreadsheet\espreadsheet.exe`.
- 2 Right-click the file name, and choose Properties.
- 3 On Properties, choose Compatibility.
- 4 On Compatibility, select Run this program as an administrator. Choose OK.

## How to use online documentation on your local system

Actuate products access HTML-format documentation from the Actuate web site. If you do not have web access or prefer to use documentation hosted on your local system, perform these steps.

- 1 Close BIRT Spreadsheet Designer.
- 2 Install the online documentation, including online help and PDF files of the product manuals, from the Online Documentation and Localization Resource Files DVD, which ships with your software, or ftp package.
- 3 Choose Start→Programs→Actuate 11→Switch Help Location.
- 4 In Switch Help Location, select Use local help. Then, choose OK. When you open BIRT Spreadsheet Designer, it accesses online help from the local system.

---

## Uninstalling BIRT Spreadsheet Designer

To uninstall BIRT Spreadsheet Designer, use Add/Remove Programs in Control Panel, as shown in Figure 1-11.

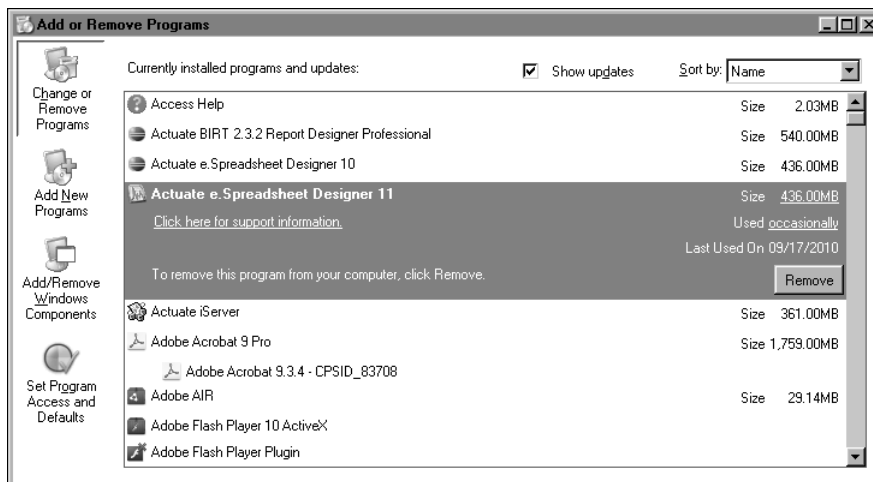


Figure 1-11 Uninstalling BIRT Spreadsheet Designer

---

## Configuring memory usage for BIRT Spreadsheet Designer

If BIRT Spreadsheet Designer displays an out of memory message, BIRT Spreadsheet Designer requires more memory than is currently allocated for the

program. If you use a database data source, ensure you perform sorting operations in a database query rather than in the report.

To solve memory allocation issues, increase the maximum allocation to enough memory to run your largest report using BIRT Spreadsheet Designer. If your platform uses virtual memory, the physical memory of the machine does not limit BIRT Spreadsheet Designer's maximum memory allocation.

To increase memory allocation, modify the BIRT Spreadsheet Designer vmoptions file. This file contains important configuration information. Save a backup copy before making any changes to the file.

You can use the vmoptions file to change any Java Virtual Machine option. Increasing memory allocation is the most common task for users modifying eSpreadsheet.vmoptions. For more information about modifying this file, see *Designing Spreadsheets using BIRT Spreadsheet Designer*.

### **How to increase memory allocation in the BIRT Spreadsheet Designer configuration file**

- 1** In a text editor, open eSpreadsheet.vmoptions.
- 2** Add or modify the memory allocation parameter. For example, to set the memory allocation to 512 megabytes, type:  
`-Xmx512M`
- 3** Save eSpreadsheet.vmoptions.
- 4** Close BIRT Spreadsheet Designer, if necessary.
- 5** To start BIRT Spreadsheet Designer and use the updated values in the eSpreadsheet.vmoptions file, choose Start→Programs→Actuate 11→Actuate BIRT Spreadsheet Designer.



# Index

## A

- accessing online documentation v
- adding
  - license keys 2
- Adobe Acrobat Catalog v

## B

- BIRT Spreadsheet Engine
  - licensing options for 2
- BIRT Spreadsheet Engine and API
  - documentation for iii
- BIRT Spreadsheet Engine license keys 2, 3

## C

- changing
  - licensing options 2
- current release iv, v
- customer license keys 2

## D

- destination folders 6
- directories, installation default 5
- documentation
  - conventions used in vi
  - obtaining v
- downloading
  - documentation v
  - product files 4

## E

- errors 2
- expired license keys 2

## F

- files
  - downloading product 4
  - installing license key 3
  - obtaining license key 2

## I

- index (online documentation) v
- indirect customer licenses 2
- installation
  - BIRT Spreadsheet Engine license keys 3
- installation application 4
- installation, performing the tasks of 4
- installing BIRT Spreadsheet Engine license keys 4
- international customers 2
- invalid license keys 2
- iServer System
  - licensing options for 2

## L

- language settings 6
- license agreement 5
- license key files 2, 3
- licensing options 2
- links v
- Locale Information settings 6
- locales
  - adding licensing options for 2

## M

- maintenance customers 2
- Manuals directory v
- master index
  - finding v

## N

- new customer licenses 2

## O

- online documentation, downloading v
- options (licensing) 2

## P

- PDF documentation v
- product updates vi

## **R**

regional settings 6

release notes iv, v

## **S**

supported products page vi

syntax conventions (documentation) vii

## **T**

typographic conventions (documentation) vi

## **U**

uninstalling BIRT Spreadsheet Designer 10

updates vi