

# Actuate One™

One Design  
One Server  
One User Experience

## **Installing e.Report Designer Professional**

Information in this document is subject to change without notice. Examples provided are fictitious. No part of this document may be reproduced or transmitted in any form, or by any means, electronic or mechanical, for any purpose, in whole or in part, without the express written permission of Actuate Corporation.

© 1995 - 2011 by Actuate Corporation. All rights reserved. Printed in the United States of America.

Contains information proprietary to:  
Actuate Corporation, 2207 Bridgepointe Parkway, San Mateo, CA 94404

[www.actuate.com](http://www.actuate.com)  
[www.birt-exchange.com](http://www.birt-exchange.com)

The software described in this manual is provided by Actuate Corporation under an Actuate License agreement. The software may be used only in accordance with the terms of the agreement. Actuate software products are protected by U.S. and International patents and patents pending. For a current list of patents, please see <http://www.actuate.com/patents>.

Actuate Corporation trademarks and registered trademarks include:  
Actuate, ActuateOne, the Actuate logo, Archived Data Analytics, BIRT, Collaborative Reporting Architecture, e.Analysis, e.Report, e.Reporting, e.Spreadsheet, Encyclopedia, Interactive Viewing, OnPerformance, Performancesoft, Performancesoft Track, Performancesoft Views, Report Encyclopedia, Reportlet, The people behind BIRT, X2BIRT, and XML reports.

Actuate products may contain third-party products or technologies. Third-party trademarks or registered trademarks of their respective owners, companies, or organizations include:

Adobe Systems Incorporated: Flash Player. Apache Software Foundation ([www.apache.org](http://www.apache.org)): Axis, Axis2, Batik, Batik SVG library, Commons Command Line Interface (CLI), Commons Codec, Derby, Shindig, Struts, Tomcat, Xerces, Xerces2 Java Parser, and Xerces-C++ XML Parser. Bits Per Second, Ltd. and Graphics Server Technologies, L.P.: Graphics Server. Bruno Lowagie and Paulo Soares: iText, licensed under the Mozilla Public License (MPL). Castor ([www.castor.org](http://www.castor.org)), ExoLab Project ([www.exolab.org](http://www.exolab.org)), and Intalio, Inc. ([www.intalio.org](http://www.intalio.org)): Castor. Codejock Software: Xtreme Toolkit Pro. DataDirect Technologies Corporation: DataDirect JDBC, DataDirect ODBC. Eclipse Foundation, Inc. ([www.eclipse.org](http://www.eclipse.org)): Babel, Data Tools Platform (DTP) ODA, Eclipse SDK, Graphics Editor Framework (GEF), Eclipse Modeling Framework (EMF), and Eclipse Web Tools Platform (WTP), licensed under the Eclipse Public License (EPL). Jason Hsueh and Kenton Varda ([code.google.com](http://code.google.com)): Protocole Buffer. ImageMagick Studio LLC.: ImageMagick. InfoSoft Global (P) Ltd.: FusionCharts, FusionMaps, FusionWidgets, PowerCharts. Mark Adler and Jean-loup Gailly ([www.zlib.net](http://www.zlib.net)): zlib. Matt Ingenthron, Eric D. Lambert, and Dustin Sallings ([code.google.com](http://code.google.com)): Spymemcached, licensed under the MIT OSI License. International Components for Unicode (ICU): ICU library. KL Group, Inc.: XRT Graph, licensed under XRT for Motif Binary License Agreement. LEAD Technologies, Inc.: LEADTOOLS. Matt Inger ([sourceforge.net](http://sourceforge.net)): Ant-Contrib, licensed under Apache License V2.0, Apache Software License. Microsoft Corporation (Microsoft Developer Network): CompoundDocument Library. Mozilla: Mozilla XML Parser, licensed under the Mozilla Public License (MPL). MySQL Americas, Inc.: MySQL Connector. Netscape Communications Corporation, Inc.: Rhino, licensed under the Netscape Public License (NPL). OOPS Consultancy: XMLTask, licensed under the Apache License, Version 2.0. Oracle Corporation: Berkeley DB. PostgreSQL Global Development Group: pgAdmin, PostgreSQL, PostgreSQL JDBC driver. Rogue Wave Software, Inc.: Rogue Wave Library SourcePro Core, tools.h++. Sam Stephenson ([prototype.conio.net](http://prototype.conio.net)): prototype.js, licensed under the MIT license. Sencha Inc.: Ext JS. Sun Microsystems, Inc.: JAXB, JDK, Jstl. ThimbleWare, Inc.: JMemcached, licensed under the Apache Public License (APL). World Wide Web Consortium (W3C)(MIT, ERCIM, Keio): Flute, Jtidy, Simple API for CSS. XFree86 Project, Inc.: ([www.xfree86.org](http://www.xfree86.org)): xvfb. Yuri Kanivets ([code.google.com](http://code.google.com)): Android Wheel gadget, licensed under the Apache Public License (APL). ZXing authors ([code.google.com](http://code.google.com)): ZXing, licensed under the Apache Public License (APL).

All other brand or product names are trademarks or registered trademarks of their respective owners, companies, or organizations.

Document No. 111021-2-130510 October 14, 2011

# Contents

<b>Introduction</b> .....	<b>iii</b>
Understanding ActuateOne .....	iii
About the Actuate e.Report Designer Professional documentation .....	iv
Accessing examples .....	vi
Obtaining documentation .....	vi
Using PDF documentation .....	vi
Obtaining late-breaking information and documentation updates .....	vi
About obtaining technical support .....	vii
About supported and obsolete products .....	vii
Typographical conventions .....	vii
Syntax conventions .....	viii
<b>Installing e.Report Designer Professional</b> .....	<b>1</b>
About Actuate e.Report Designer Professional .....	1
Installing Actuate e.Report Designer Professional .....	2
<b>Index</b> .....	<b>9</b>



---

## Understanding ActuateOne

ActuateOne™ includes Release 11 Service Pack 3 of Actuate® Corporation's value-added products for the Eclipse BIRT open source project. ActuateOne institutes a paradigm shift in Business Intelligence technology from individualized tools to a suite of integrated capabilities within a single environment. ActuateOne is one designer, one server, one integrated environment providing a single unified user experience. A common architecture is precisely what today's information-rich global environment requires for development and deployment. This unified Actuate technology continues to enable information management and delivery while supporting advanced security, massive scalability, flexibility through programming, and reuse. ActuateOne realizes our corporate vision of a single user experience by providing extended new analytics capabilities reaching a broader spectrum of users. The new dashboard functionality supports building gadgets to enhance the visual presentation of information. Export to Excel® and other formats integrates Actuate output with other tools on the end-user desktop. Actuate's cloud-ready server supports elastic clustering for dynamic provision of uninterrupted efficient service.

Information, live demos, and endorsements about this release are available from [birt-exchange.com](http://birt-exchange.com) and [actuate.com](http://actuate.com). The Actuate site also makes "The Forrester Wave™: Open Source Business Intelligence (BI), Q3 2010" report freely available. The report recognizes Actuate and its value-added offerings for BIRT as a leader in Open Source Business Intelligence.




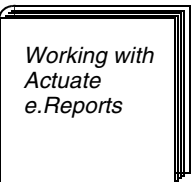
---

## About the Actuate e.Report Designer Professional documentation

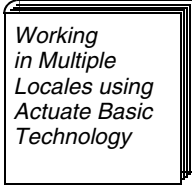
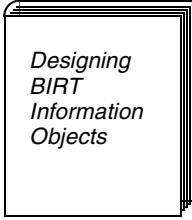
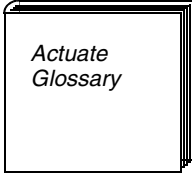
The printed and online documentation includes the materials described in Table I-1. You can obtain PDF files from [support.actuate.com](http://support.actuate.com). Documentation updates are created in response to customer needs and are available at this site.

The printed and online documentation for e.Report Designer Professional also includes the programming materials described in Table I-2.

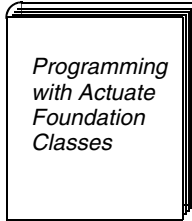
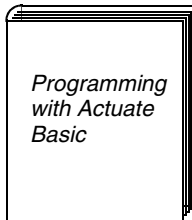
**Table I-1** Product documentation

<b>For information about this topic</b>	<b>See the following resource</b>
Late-breaking information and documentation updates	Release notes and updated localization and PDF files posted on Actuate <a href="#">Support</a>
Installing Actuate e.Report Designer Professional	
Overview of Actuate reporting concepts Designing reports using the graphical user interface and programming capabilities of e.Report Designer Professional	
Overview of data access concepts Accessing data from databases, information objects, text files, Actuate Query output, and ODBC data sources Overview and reference guide for creating a driver to access custom data sources	
Viewing and searching Actuate Basic reports using the DHTML viewer	

**Table I-1** Product documentation

<b>For information about this topic</b>	<b>See the following resource</b>
Formatting report data for multiple locales Report encoding Designing reports with right-to-left orientation	 <i>Working in Multiple Locales using Actuate Basic Technology</i>
Overview of Actuate information object concepts Creating information objects, projects, connection definitions, and maps Building and publishing projects Actuate SQL reference information Configuring database types	 <i>Designing BIRT Information Objects</i>
Glossary	 <i>Actuate Glossary</i>

**Table I-2** Programming documentation

<b>For information about this topic</b>	<b>See the following resource</b>
Overview of Actuate Foundation Classes Overview of how to work with classes and objects Reference for Actuate Foundation Classes, including class inheritance, hierarchy, and descriptions of properties, variables, and methods	 <i>Programming with Actuate Foundation Classes</i>
Overview of Actuate Basic syntax and coding conventions Working with Actuate Basic variables, data types, and procedures Reference for Actuate Basic programming, including descriptions of statements, functions, data types, keywords, and operators	 <i>Programming with Actuate Basic</i>

## Accessing examples

The Examples folder in the product directory contains report examples. Each sample report folder contains a variety of files, often including a text file that discusses how the example works.

## Obtaining documentation

Actuate provides technical documentation in PDF, HTML, and print formats. You can download PDF versions of the documentation from [support.actuate.com](http://support.actuate.com). If you purchase the product, you can also download documentation using ftp as instructed in the e-mail from Actuate Distribution.

If you request a physical package, install the files using the Online Documentation and Localization Resource Files DVD, which ships as part of your Actuate software package. If you select the typical setup when you install from the DVD, the installation creates the Actuate11\Manuals directory.

## Using PDF documentation

In each book, the table of contents and the index page numbers contain links to the corresponding topics in the text. In the table of contents, you access the link by positioning the pointer over the topic. In the index, you access the link by positioning the pointer over the page number.

The Actuate11\Manuals directory contains a file, master-index.pdx, which is an Adobe Acrobat Catalog utility that can search all the documents in the Actuate Manuals directory. This tool provides a convenient way to find information on a particular topic in Actuate documentation.

## Obtaining late-breaking information and documentation updates

The release notes contain late-breaking news about Actuate products and features. The release notes are available on the Actuate Support site at the following URL:

<http://support.actuate.com/documentation/releasenotes>

Updates to documentation in PDF form are available at the following URL:

<http://support.actuate.com/documentation>

A new user must first register on the site and log in to view the release notes.

[Actuate.com](http://www.actuate.com) also provides product update information. To download updated product documentation, use the following URL:

<http://www.actuate.com/docupdate11sp1/docupdate.html>



Alternatively, after installing Actuate release 11 products, use Start→Programs→Actuate 11→Update Documentation to access this URL.

---

## About obtaining technical support

You can contact customer support by e-mail or telephone. For contact information, go to the following URL:

<http://www.actuate.com/services/support/contact-support.asp>

---

## About supported and obsolete products

The Actuate Support Lifecycle Policy and Supported Products Matrix are available on the Actuate e.Support web site. You can access the e.Support site at the following URL:

<http://support.actuate.com/documentation/spm>

---

## Typographical conventions

Table I-3 describes the typographical conventions in this document.

**Table I-3** Typographical conventions

Item	Convention	Example
Code examples	Monospace	<code>Dim Text1 As String</code>
File names	Initial capital letter, except where file names are case-sensitive	<code>Detail.roi</code>
Key combination	A + sign between keys means to press both keys at the same time	<code>Ctrl+Shift</code>
Menu items	Capitalized, no bold	<code>File</code>
Submenu items	Separated from the menu item by a small arrow	<code>File→New</code>
User input or user response	Monospace	<code>M*16*</code>
User input in XML and Java code	Monospace italics	<code>chkjava.exe</code> <code>cab_name.cab</code>

---

## Syntax conventions

Table I-4 describes the symbols used to present syntax.

**Table I-4**      Syntax conventions

Symbol	Description	Example
[ ]	Optional item	[Alias<alias name>]
	Array subscript	matrix[ ]
{ }	Groups two or more mutually exclusive options or arguments when used with a pipe	{While   Until}
	Defines array contents	{0, 1, 2, 3}
	Delimiter of code block	public ACJDesigner( ) { }
	Separates mutually exclusive options or arguments in a group	Exit {Do   For   Function   Sub}
	Java OR operator	int length   4
< >	Argument you must supply	<expression to format>
	Delimiter in XML	<xsd:sequence>

# Installing e.Report Designer Professional

---

---

## About Actuate e.Report Designer Professional

Actuate e.Report Designer Professional is a report designer for report developers who design, build and distribute structured content. e.Report Designer Professional supports beginning report developers and experienced report developers who leverage programming.

This chapter describes how to install Actuate e.Report Designer Professional Release 11 Service Pack 3. Installing Actuate e.Report Designer Professional also installs Actuate BIRT Information Object Designer. To overwrite an existing Information Object Designer installation during the e.Report Designer Professional installation, you must instruct InstallShield™ Wizard to install e.Report Designer Professional in the directory that contains the Information Object Designer directory. For example, if the Information Object Designer installation is located in the C:\MyActuate\IOD directory, specify the following directory for the e.Report Designer Professional installation:

```
C:\MyActuate\eRDPro
```

If you specify a different directory from the one that contains the Information Object Designer's installation directory, e.Report Designer Professional's installation installs another instance of Information Object Designer. If you later choose to uninstall Information Designer, both instances of Information Object Designer are removed from the system.

The Release 11 Service Pack 3 software does not use configuration information from a previous release. For information about upgrading, see *Release Notes Release 11 Service Pack 3*.

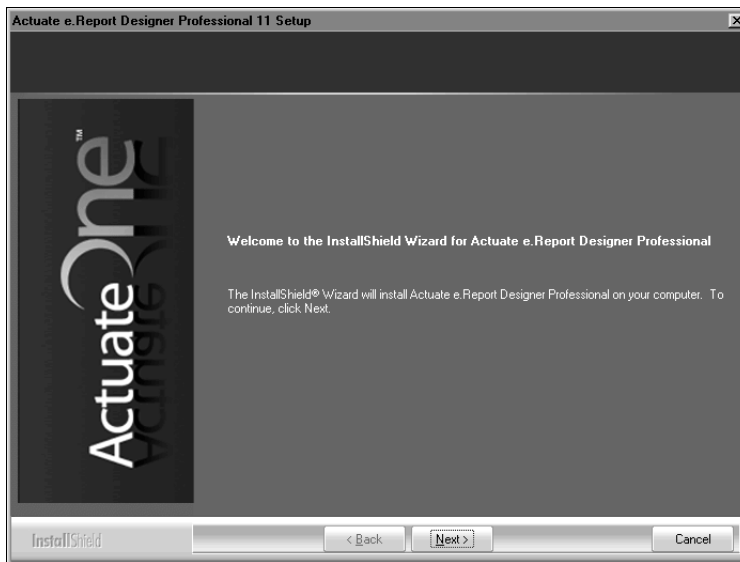
---

# Installing Actuate e.Report Designer Professional

Make sure the user account you use to install e.Report Designer Professional is a member of the Administrators group. On a new Windows Vista installation, the initial user account is, by default, not a member of the Administrators group. Configure the user account to be a member of this group.

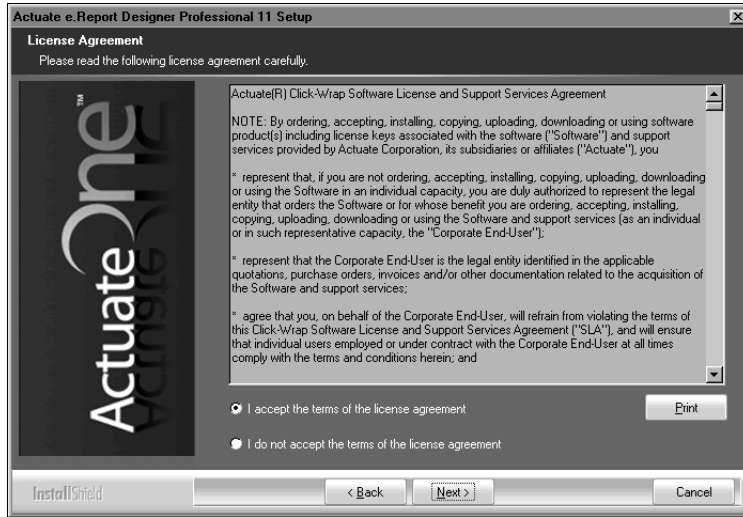
## How to install e.Report Designer Professional

- 1 Log in to Windows as Administrator.
- 2 Insert the product DVD into your DVD drive.
- 3 Using Windows Explorer, navigate to \verdpro on the DVD.
- 4 Double-click setup.exe. InstallShield Wizard extracts the files necessary to install e.Report Designer Professional on your computer. After a few moments, Welcome to the InstallShield Wizard for Actuate e.Report Designer Professional appears, as shown in Figure 1-1. Choose Next.



**Figure 1-1** Starting the InstallShield Wizard for Actuate e.Report Designer Professional

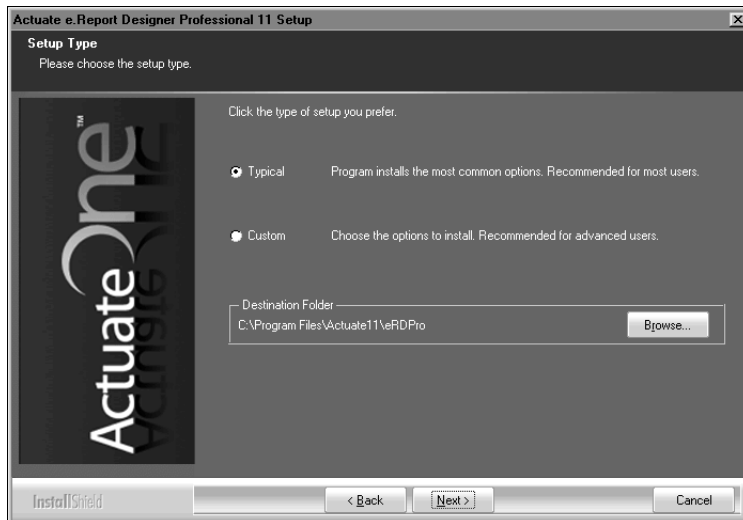
- 5 In License Agreement, read the agreement. Select I accept the terms of the license agreement, as shown in Figure 1-2. Then, choose Next.



**Figure 1-2** Accepting the license agreement

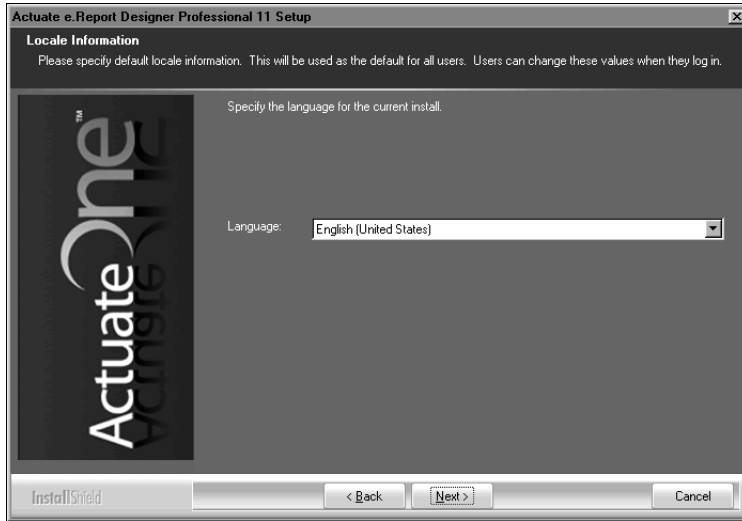
- 6 In Setup Type, select Typical. If you are installing e.Report Designer Professional on a Windows XP Professional, a Windows Server 2003, or a Windows Vista system, the default program location, C:\Program Files\Actuate11\eRDPro, appears as shown in Figure 1-3. If you are installing e.Report Designer Professional on a Windows 7 Professional system, the default program location is C:\Program Files (x86)\Actuate11\eRDPro.

Choose Next.



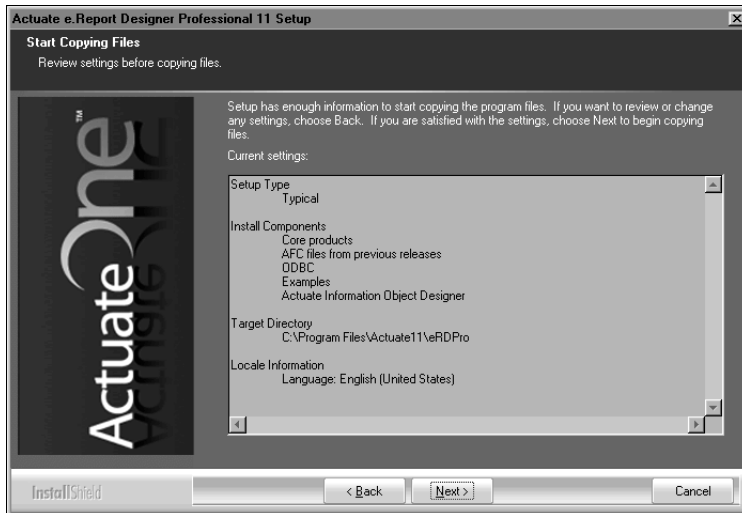
**Figure 1-3** Selecting the Typical setup type

In Locale Information, select a locale. The illustrations in this manual use the English (United States) locale, as shown in Figure 1-4. The computer's operating system language and regional settings must be compatible with the default locale settings you configure during installation. Choose Next.



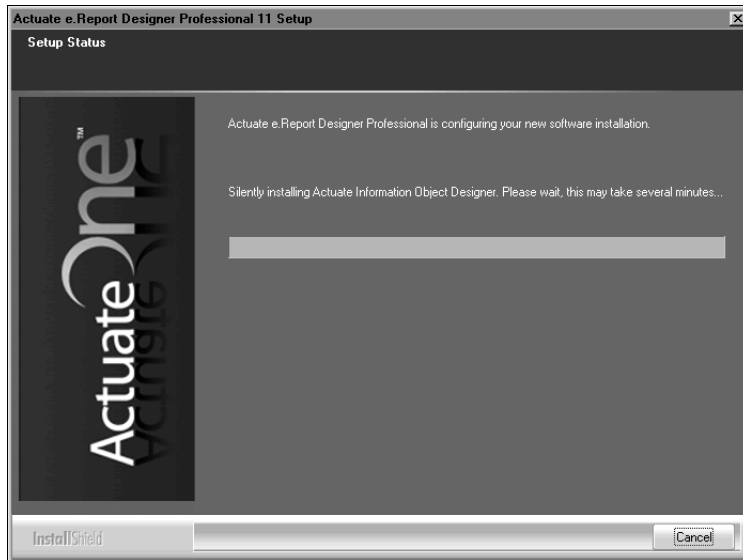
**Figure 1-4** Selecting the US English locale

- 7 In Start Copying files, verify the program components to be installed, as shown in Figure 1-5. Then, choose Next.



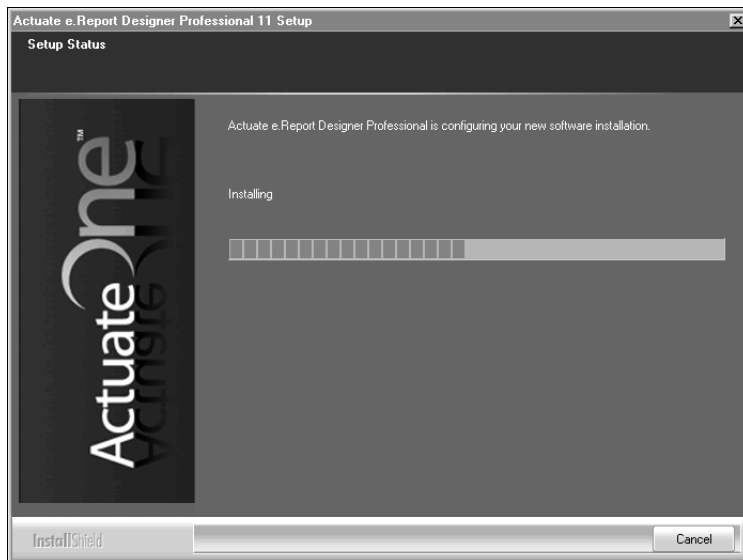
**Figure 1-5** Verifying program components before copying files

Setup Status displays messages about the progress of the installation. First, the wizard installs Actuate Information Object Designer, as shown in Figure 1-6.



**Figure 1-6** Monitoring the installation of Information Object Designer

Then, the wizard installs Actuate e.Report Designer Professional, as shown in Figure 1-7.

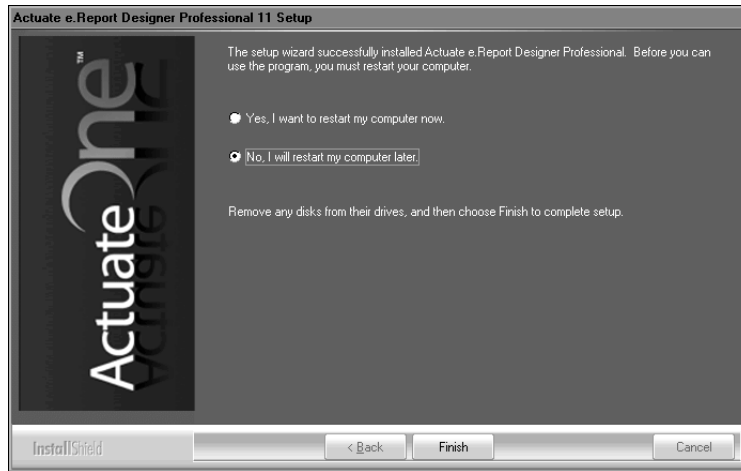


**Figure 1-7** Monitoring the installation of e.Report Designer Professional

8 The final step of the installation depends on whether Windows determines that a reboot is necessary:

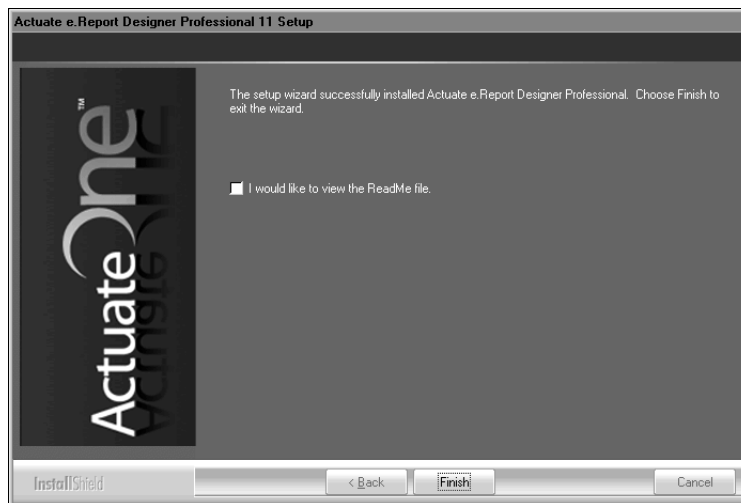
- If prompted to view the ReadMe file, choose No.

To complete the installation wizard, select No, I will restart my computer later, as shown in Figure 1-8. Then, choose Finish.



**Figure 1-8** Selecting to reboot later and finish the e.Report Designer Professional installation wizard

- If a reboot is not required, clear I would like to view the ReadMe file, as shown in Figure 1-9. Then, choose Finish to exit the installation wizard.



**Figure 1-9** Selecting not to view the ReadMe file



- 9 In the message that reminds you to install Actuate Online Documentation and Localization Resource Files, similar to the one in Figure 1-10, choose OK.



**Figure 1-10** Localization and Online Documentation reminder message



# Index

## A

accessing  
    online documentation vi  
    sample reports vi  
Adobe Acrobat Catalog vi

## B

BIRT Designer Professional  
    overview 1

## C

current release iv, vi

## D

documentation iv  
    conventions used in vii  
    obtaining vi  
downloading  
    documentation vi

## E

e.Report Designer Professional  
    documentation for iv  
    installing 2–7  
example reports. *See* sample reports  
Examples directory vi

## I

index (online documentation) vi  
installation  
    e.Report Designer Professional 2–7

## L

language settings 4  
links vi  
locale settings 4

## M

Manuals directory vi  
master index  
    finding vi

## O

online documentation iv  
online documentation, downloading vi

## P

PDF documentation vi

## R

regional settings 4  
release notes iv, vi  
reporting examples. *See* Examples directory  
reports  
    accessing sample vi

## S

sample reports vi  
setup.exe 2  
supported products page vii  
syntax conventions (documentation) viii

## T

typographic conventions  
    (documentation) vii

## V

Vista operating systems 2

