

ActuateOne™

One Design
One Server
One User Experience

Installing BIRT Spreadsheet Designer

Information in this document is subject to change without notice. Examples provided are fictitious. No part of this document may be reproduced or transmitted in any form, or by any means, electronic or mechanical, for any purpose, in whole or in part, without the express written permission of Actuate Corporation.

© 1995 - 2011 by Actuate Corporation. All rights reserved. Printed in the United States of America.

Contains information proprietary to:
Actuate Corporation, 2207 Bridgepointe Parkway, San Mateo, CA 94404

www.actuate.com
www.birt-exchange.com

The software described in this manual is provided by Actuate Corporation under an Actuate License agreement. The software may be used only in accordance with the terms of the agreement. Actuate software products are protected by U.S. and International patents and patents pending. For a current list of patents, please see <http://www.actuate.com/patents>.

Actuate Corporation trademarks and registered trademarks include:
Actuate, ActuateOne, the Actuate logo, Archived Data Analytics, BIRT, Collaborative Reporting Architecture, e.Analysis, e.Report, e.Reporting, e.Spreadsheet, Encyclopedia, Interactive Viewing, OnPerformance, Performancesoft, Performancesoft Track, Performancesoft Views, Report Encyclopedia, Reportlet, The people behind BIRT, X2BIRT, and XML reports.

Actuate products may contain third-party products or technologies. Third-party trademarks or registered trademarks of their respective owners, companies, or organizations include:

Adobe Systems Incorporated: Flash Player. Apache Software Foundation (www.apache.org): Axis, Axis2, Batik, Batik SVG library, Commons Command Line Interface (CLI), Commons Codec, Derby, Shindig, Struts, Tomcat, Xerces, Xerces2 Java Parser, and Xerces-C++ XML Parser. Bits Per Second, Ltd. and Graphics Server Technologies, L.P.: Graphics Server. Bruno Lowagie and Paulo Soares: iText, licensed under the Mozilla Public License (MPL). Castor (www.castor.org), ExoLab Project (www.exolab.org), and Intalio, Inc. (www.intalio.org): Castor. Codejock Software: Xtreme Toolkit Pro. DataDirect Technologies Corporation: DataDirect JDBC, DataDirect ODBC. Eclipse Foundation, Inc. (www.eclipse.org): Babel, Data Tools Platform (DTP) ODA, Eclipse SDK, Graphics Editor Framework (GEF), Eclipse Modeling Framework (EMF), and Eclipse Web Tools Platform (WTP), licensed under the Eclipse Public License (EPL). Jason Hsueh and Kenton Varda (code.google.com): Protocole Buffer. ImageMagick Studio LLC.: ImageMagick. InfoSoft Global (P) Ltd.: FusionCharts, FusionMaps, FusionWidgets, PowerCharts. Mark Adler and Jean-loup Gailly (www.zlib.net): zlib. Matt Ingenthron, Eric D. Lambert, and Dustin Sallings (code.google.com): Spymemcached, licensed under the MIT OSI License. International Components for Unicode (ICU): ICU library. KL Group, Inc.: XRT Graph, licensed under XRT for Motif Binary License Agreement. LEAD Technologies, Inc.: LEADTOOLS. Matt Inger (sourceforge.net): Ant-Contrib, licensed under Apache License V2.0, Apache Software License. Microsoft Corporation (Microsoft Developer Network): CompoundDocument Library. Mozilla: Mozilla XML Parser, licensed under the Mozilla Public License (MPL). MySQL Americas, Inc.: MySQL Connector. Netscape Communications Corporation, Inc.: Rhino, licensed under the Netscape Public License (NPL). OOPS Consultancy: XMLTask, licensed under the Apache License, Version 2.0. Oracle Corporation: Berkeley DB. PostgreSQL Global Development Group: pgAdmin, PostgreSQL, PostgreSQL JDBC driver. Rogue Wave Software, Inc.: Rogue Wave Library SourcePro Core, tools.h++. Sam Stephenson (prototype.conio.net): prototype.js, licensed under the MIT license. Sencha Inc.: Ext JS. Sun Microsystems, Inc.: JAXB, JDK, Jstl. ThimbleWare, Inc.: JMemcached, licensed under the Apache Public License (APL). World Wide Web Consortium (W3C)(MIT, ERCIM, Keio): Flute, JTIty, Simple API for CSS. XFree86 Project, Inc.: (www.xfree86.org): xvfb. Yuri Kanivets (code.google.com): Android Wheel gadget, licensed under the Apache Public License (APL). ZXing authors (code.google.com): ZXing, licensed under the Apache Public License (APL).

All other brand or product names are trademarks or registered trademarks of their respective owners, companies, or organizations.

Document No. 111021-2-961510 October 21, 2011

Contents

| | |
|---|-------------|
| Introduction | .iii |
| Understanding the Actuate 11 family of products | iii |
| About BIRT Spreadsheet Designer documentation | iii |
| Obtaining documentation | v |
| Using PDF documentation | v |
| Obtaining late-breaking information and documentation updates | v |
| About obtaining technical support | vi |
| About supported and obsolete products | vi |
| Typographical conventions | vi |
| Syntax conventions | vii |
| Installing and configuring BIRT Spreadsheet Designer | 1 |
| Installing Actuate BIRT Spreadsheet Designer | 1 |
| Uninstalling BIRT Spreadsheet Designer | 7 |
| Configuring memory usage for BIRT Spreadsheet Designer | 7 |
| Configuring Actuate BIRT iServer System for spreadsheet reports | 8 |
| Index | 11 |

Understanding the Actuate 11 family of products

ActuateOne™ includes Release 11 of Actuate® Corporation's value-added products for the Eclipse BIRT open source project. ActuateOne institutes a paradigm shift in Business Intelligence technology from individualized tools to a suite of integrated capabilities within a single environment. ActuateOne is one designer, one server, one integrated environment providing a single unified user experience. A common architecture is precisely what today's information-rich global environment requires for development and deployment. This unified Actuate technology continues to enable information management and delivery while supporting advanced security, massive scalability, flexibility through programming, and reuse. ActuateOne realizes our corporate vision of a single user experience by providing extended new analytics capabilities reaching a broader spectrum of users. The new dashboard functionality supports building gadgets to enhance the visual presentation of information. Export to Excel® and other formats integrates Actuate output with other tools on the end-user desktop. Actuate's cloud-ready server supports elastic clustering for dynamic provision of uninterrupted efficient service.



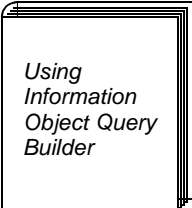
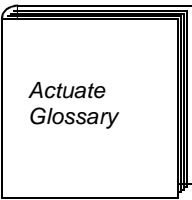
Information, live demos, and endorsements about this release are available from birt-exchange.com and actuate.com. The Actuate site also makes "The Forrester Wave™: Open Source Business Intelligence (BI), Q3 2010" report freely available. The report recognizes Actuate and its value-added offerings for BIRT as a leader in Open Source Business Intelligence.

About BIRT Spreadsheet Designer documentation

The printed and online documentation includes the materials described in Table I-1. You can obtain HTML and PDF files from the BIRT Exchange or Actuate Customer Support site.

Documentation updates are created in response to customer requirements and are available at both sites.

Table I-1 Product documentation

| For information about this topic | See the following resource |
|--|---|
| Installing and configuring BIRT Spreadsheet Designer |  <p><i>Installing BIRT Spreadsheet Designer</i></p> |
| Late-breaking information and documentation updates | Release notes and updated localization, HTML help, and PDF files posted on birt-exchange.com and Actuate Support |
| Designing and publishing spreadsheet reports using BIRT Spreadsheet Designer Overview of data access concepts Accessing data from databases, other JDBC data sources, text files, and custom data sources Importing, formatting, and manipulating data Using callback classes and VBA code Adding security features |  <p><i>Designing Spreadsheets using BIRT Spreadsheet Designer</i></p> |
| Accessing data from Actuate information objects Actuate SQL reference |  <p><i>Using Information Object Query Builder</i></p> |
| Glossary |  <p><i>Actuate Glossary</i></p> |

Obtaining documentation

Actuate provides technical documentation in PDF, HTML, and print formats. Actuate products access HTML-format documentation from the Actuate web site. If you do not have web access or prefer to use documentation hosted on your local system, install the documentation from the Online Documentation and Localization Resource Files DVD or ftp package. You can download PDF or view HTML versions of the documentation from birt-exchange.com. If you purchase the product, you can also download documentation using ftp as instructed in the e-mail from Actuate Distribution.

If you request a physical package, install the files using the Online Documentation and Localization Resource Files DVD, which ships as part of your Actuate software package. If you select the typical setup when you install from the DVD, the installation creates the `Actuate11\Manuals` directory.

Using PDF documentation

In each book, the table of contents and the index page numbers contain links to the corresponding topics in the text. In the table of contents, you access the link by positioning the pointer over the topic. In the index, you access the link by positioning the pointer over the page number.

The `Actuate11\Manuals` directory contains a file, `master-index.pdx`, which is an Adobe Acrobat Catalog utility that can search all the documents in the Actuate Manuals directory. This tool provides a convenient way to find a particular topic in Actuate documentation.

Obtaining late-breaking information and documentation updates

The release notes contain late-breaking news about Actuate products and features. The release notes are available on the Actuate Support site at the following URL:

<http://support.actuate.com/documentation/releasenotes>

Updates to documentation in PDF form are available at the following URL:

<http://support.actuate.com/documentation>

A new user must first register on the site and log in before viewing these pages.

[Birt-exchange.com](http://birt-exchange.com) and actuate.com also provide updated product information. To download updated product documentation, use the following URL:

<http://www.actuate.com/docupdate11sp1/docupdate.html>

Alternatively, after installing Actuate release 11 products, use **Start**→**Programs**→**Actuate 11**→**Update Documentation** to access this URL.

About obtaining technical support

You can contact customer support by e-mail or telephone. For contact information, go to the following URL:

<http://www.actuate.com/services/support/contact-support/>

About supported and obsolete products

The Actuate Support Lifecycle Policy and Supported Products Matrix are available on the Actuate Support web site. You can access the Support site at the following URL:

<http://support.actuate.com/documentation/spm>

Typographical conventions

Table I-2 describes the typographical conventions in this document.

Table I-2 Typographical conventions

| Item | Convention | Example |
|---------------------------------|--|-----------------------------|
| Code examples | Monospace | Dim Text1 As String |
| File names | Initial capital letter, except where file names are case-sensitive | Detail.roi |
| Key combination | A + sign between keys means to press both keys at the same time | Ctrl+Shift |
| Menu items | Capitalized, no bold | File |
| Submenu items | Separated from the main menu item with a small arrow | File→New |
| User input or user response | Monospace | M*16* |
| User input in XML and Java code | Monospace italics | chkjava.exe cab_name.cab |

Syntax conventions

Table I-3 describes the symbols used to present syntax.

Table I-3 Syntax conventions

| Symbol | Description | Example |
|--------|---|--|
| [] | Optional item Array subscript | [Alias<alias name>] matrix[] |
| { } | Groups two or more mutually exclusive options or arguments when used with a pipe Defines array contents | {While Until} {0, 1, 2, 3} |
| | Delimiter of code block Separates mutually exclusive options or arguments in a group Java OR operator | public myClass(){ } Exit {Do For Function Sub} int length 4 |
| < > | Argument you must supply Delimiter in XML | <expression to format> <xsd:sequence> |

Installing and configuring BIRT Spreadsheet Designer

This guide describes how to install Actuate BIRT Spreadsheet Designer Release 11. This document also describes how to increase memory allocation for BIRT Spreadsheet Designer.

Installing Actuate BIRT Spreadsheet Designer

You install Actuate BIRT Spreadsheet Designer using the installation wizard. The installation wizard:

- Prompts you to set the install location
- Copies Actuate BIRT Spreadsheet Designer program to the install location
- Creates an icon in the Start menu for Actuate BIRT Spreadsheet Designer

How to install on supported Microsoft Windows systems

To evaluate BIRT Spreadsheet Designer, go to the following location to download the installation executable file: <http://www.birt-exchange.com>

Save the file to your computer. Alternatively, you can run the installation program directly from the BIRT exchange web site. If you are a purchasing customer, you can download BIRT Spreadsheet Designer from an Actuate ftp site or install from a product DVD. To install BIRT Spreadsheet Designer, perform the following tasks:

- 1 If you downloaded BIRT Spreadsheet Designer, run the ActuateBIRTSpreadsheetDesigner.exe file. If you have a DVD or ftp distribution, run setup.exe in the BIRT Spreadsheet Designer directory. A welcome message appears, as shown in Figure 1-1. Choose Next.

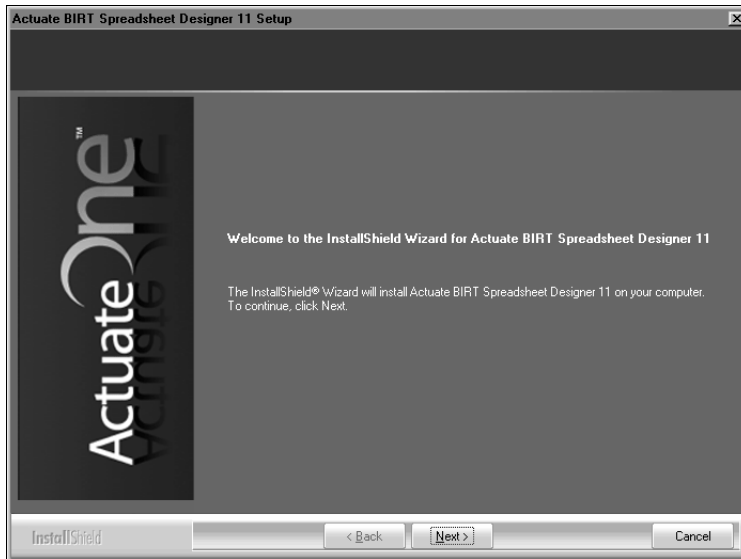


Figure 1-1 Welcome message

- 2 Read and accept the license agreement, as shown in Figure 1-2. Choose Next.

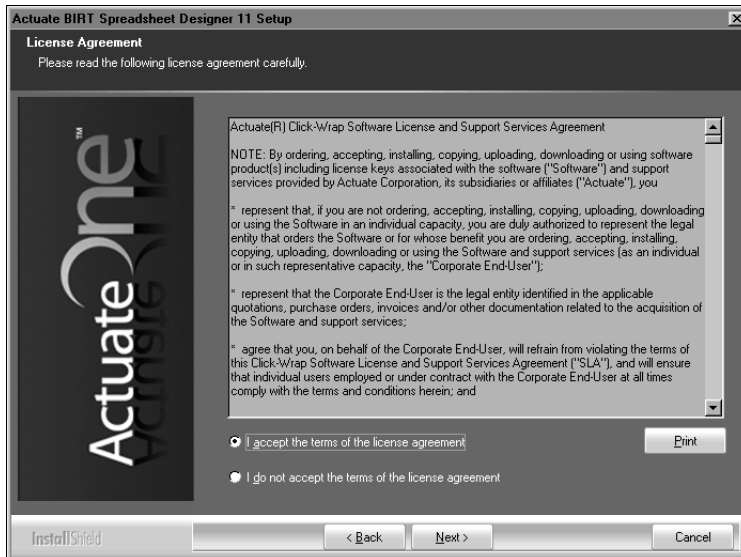


Figure 1-2 Accepting the license agreement

- 3 Accept the default destination folder, C:\Program Files\Actuate11\spreadsheet, as shown in Figure 1-3. Select Typical, then choose Next.

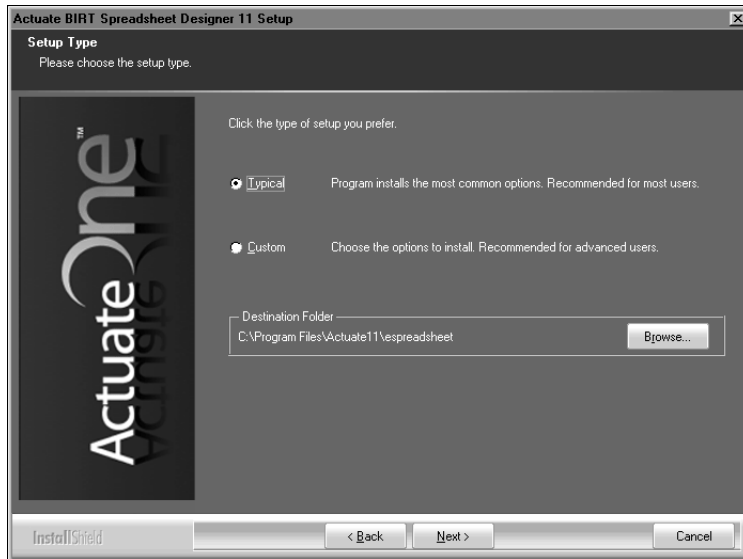


Figure 1-3 Choosing the destination folder in setup type

Alternatively, to install specific features, select Custom, then choose Next, as shown in Figure 1-4.

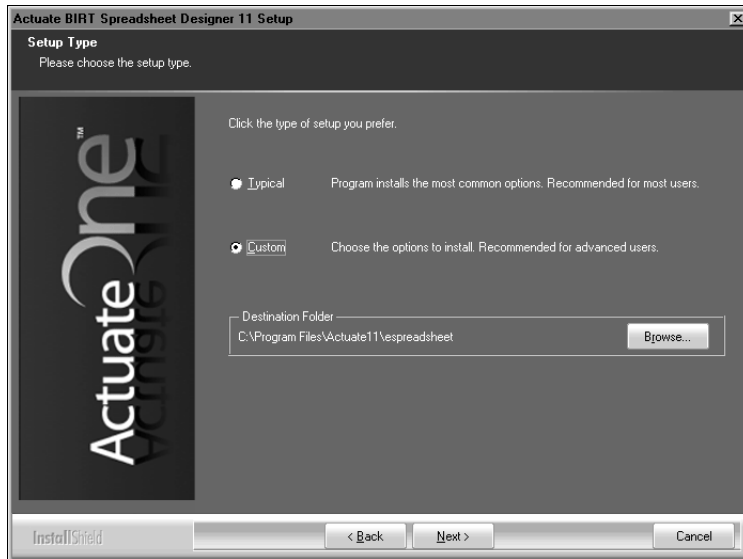


Figure 1-4 Specifying a custom installation

If customizing your installation, select features to install, as shown in Figure 1-5, then choose Next.

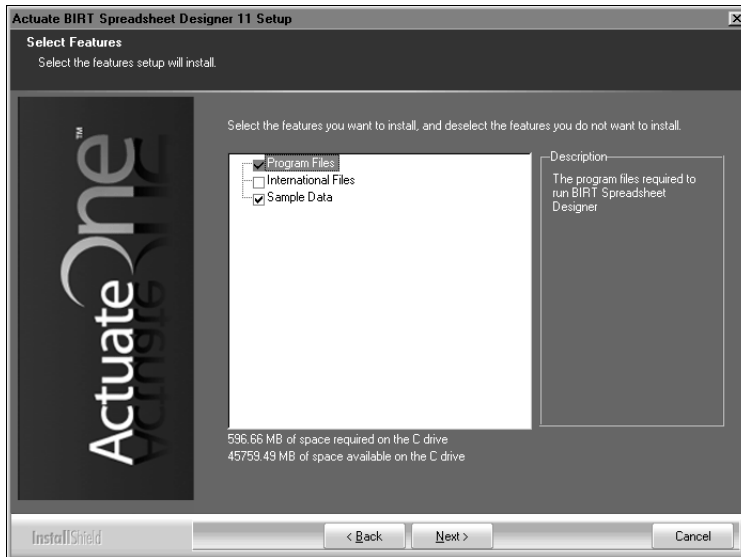


Figure 1-5 Selecting features to install

- 4 In Start Copying Files, review installation settings. To change settings, choose Back. To start copying files, choose Next, as shown in Figure 1-6.



Figure 1-6 Reviewing installation settings

- 5 Setup Status displays the install progress as shown in Figure 1-7. To stop the installation, choose Cancel.

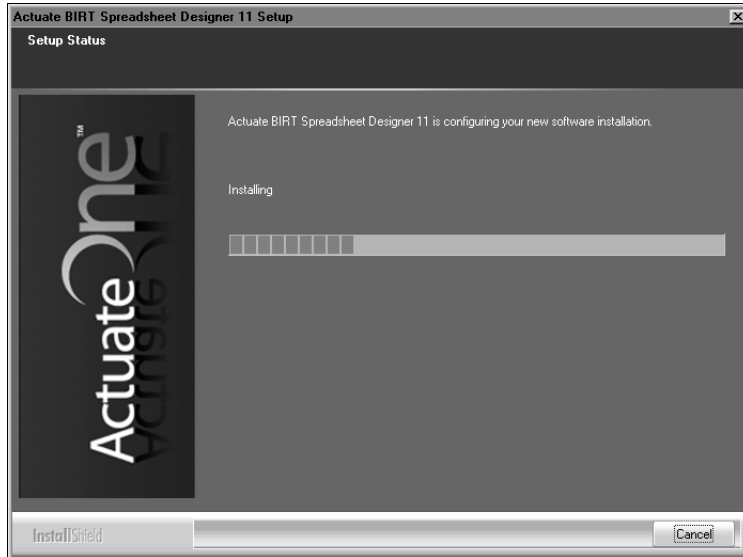


Figure 1-7 Monitoring installation progress

- 6 When installation progress completes, a message that BIRT Spreadsheet Designer installed successfully appears, as shown in Figure 1-8. To prevent the Readme.rtf file from appearing, deselect the Readme option. To exit the installation wizard, choose Finish.

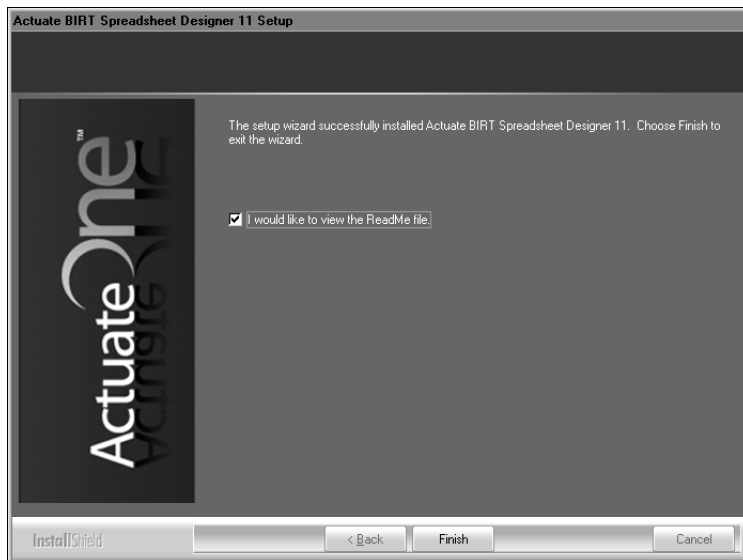


Figure 1-8 Exiting the installation wizard

If you choose Finish without deselecting the Readme file option, the Readme.rtf file appears, as shown in Figure 1-9.

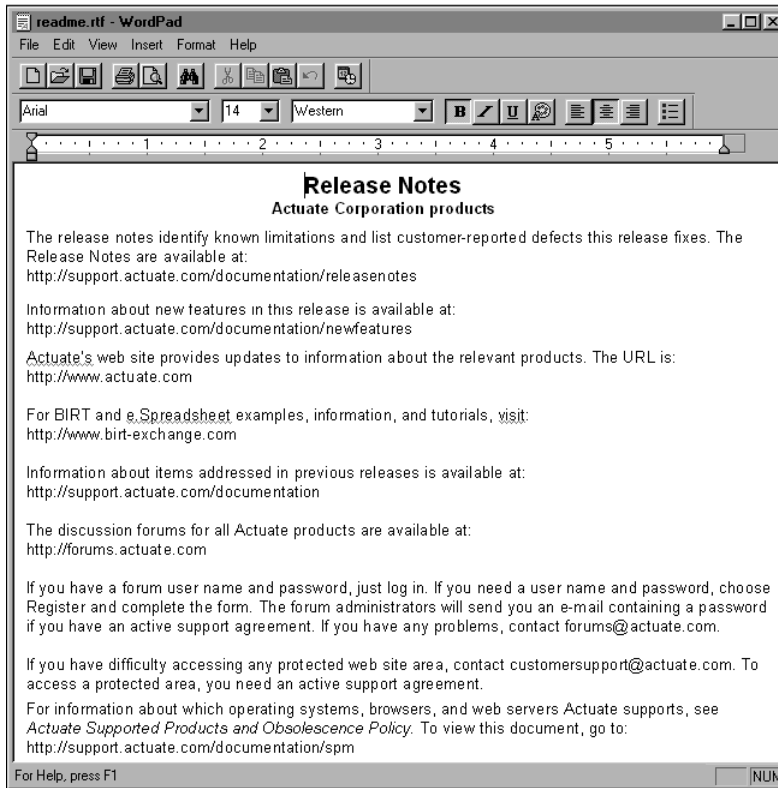


Figure 1-9 Release notes in the readme.rtf file

The installation program installs the BIRT Spreadsheet Designer icon on the Start menu, as shown in Figure 1-10.

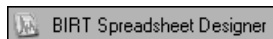


Figure 1-10 BIRT Spreadsheet Designer icon

How to specify running BIRT Spreadsheet Designer as an administrator on Windows Vista

- 1 In Windows Explorer, navigate to and select the BIRT Spreadsheet Designer executable file. The default installation location for the file is `\Program Files\Actuate11\espreadsheet\espreadsheet.exe`.
- 2 Right-click the file name, and choose Properties.
- 3 On Properties, choose Compatibility.
- 4 On Compatibility, select Run this program as an administrator. Choose OK.

How to use online documentation on your local system

Actuate products access HTML-format documentation from the Actuate web site. If you do not have web access or prefer to use documentation hosted on your local system, perform these steps.

- 1 Close BIRT Spreadsheet Designer.
- 2 Install the online documentation, including online help and PDF files of the product manuals, from the Online Documentation and Localization Resource Files DVD, which ships with your software, or ftp package.
- 3 Choose Start→Programs→Actuate 11→Switch Help Location.
- 4 In Switch Help Location, select Use local help. Then, choose OK. When you open BIRT Spreadsheet Designer, it accesses online help from the local system.

Uninstalling BIRT Spreadsheet Designer

To uninstall BIRT Spreadsheet Designer, use Add/Remove Programs in Control Panel, as shown in Figure 1-11.

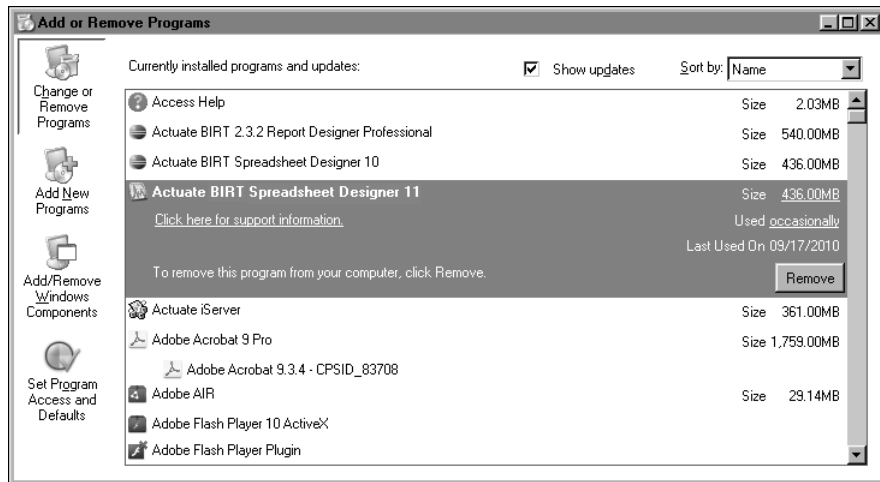


Figure 1-11 Uninstalling BIRT Spreadsheet Designer

Configuring memory usage for BIRT Spreadsheet Designer

If BIRT Spreadsheet Designer displays an out of memory message, BIRT Spreadsheet Designer requires more memory than is currently allocated for the

program. If you use a database data source, ensure you perform sorting operations in a database query rather than in the report.

To solve memory allocation issues, increase the maximum allocation to enough memory to run your largest report using BIRT Spreadsheet Designer. If your platform uses virtual memory, the physical memory of the machine does not limit BIRT Spreadsheet Designer's maximum memory allocation.

To increase memory allocation, modify the BIRT Spreadsheet Designer `vmoptions` file. This file contains important configuration information. Save a backup copy before making any changes to the file.

You can use the `vmoptions` file to change any Java Virtual Machine option. Increasing memory allocation, however, is the most common task for users modifying `eSpreadsheet.vmoptions`. For more information about modifying this file, see *Designing Spreadsheets using BIRT Spreadsheet Designer*.

How to increase memory allocation in the BIRT Spreadsheet Designer configuration file

- 1 In a text editor, open `eSpreadsheet.vmoptions`.
- 2 Add or modify the memory allocation parameter. For example, to set the memory allocation to 512 megabytes, type:
`-Xmx512M`
- 3 Save `eSpreadsheet.vmoptions`.
- 4 Close BIRT Spreadsheet Designer, if necessary.
- 5 To start BIRT Spreadsheet Designer and use the updated values in the `eSpreadsheet.vmoptions` file, choose **Start**→**Programs**→**Actuate 11**→**Actuate BIRT Spreadsheet Designer**.

Configuring Actuate BIRT iServer System for spreadsheet reports

This section provides information about what to do if you experience memory issues when you publish a spreadsheet report. If memory errors persist after you increase the memory allocation pool and turn on incremental garbage collection for BIRT Spreadsheet Designer, you can increase the memory allocation for BIRT Spreadsheet processes on the server.

To increase memory, you must change the `StartArguments` configuration variable in the `acserverconfig.xml` file. This file installs with Actuate BIRT iServer System to the `iServer\etc` directory.

How to increase memory allocation for BIRT Spreadsheet processes on an Actuate BIRT iServer

- 1** In a text editor, open acserverconfig.xml.
- 2** Locate the StartArguments variable in the ReportingService section. In place of the first variable value, type -Xmx, followed by the new memory allocation, followed by M. For example, to set the memory allocation to 512, type the following value:
`-Xmx512M`
- 3** To increase viewing memory, you must also change the value of the StartArguments variable in the ViewingService section of the file.
- 4** Save acserverconfig.xml.

Index

A

accessing online documentation v
Adobe Acrobat Catalog v

B

BIRT iServer platforms vi
BIRT Spreadsheet Designer
documentation for iii

C

current release iv, v

D

destination folders 3
directories, installation default 2
documentation
conventions used in vi
obtaining v
downloading
documentation v
product files 1

F

files
downloading product 1

I

index (online documentation) v
installation application 1
installation, performing the tasks of 1

L

language settings 3
license agreement 2
links v
Locale Information settings 3

M

Manuals directory v
master index
finding v

O

online documentation, downloading v

P

PDF documentation v
product updates v

R

regional settings 3
release notes iv, v

S

supported products page vi
syntax conventions (documentation) vii

T

typographic conventions (documentation) vi

U

uninstalling BIRT Spreadsheet Designer 7
updates v

