

Actuate One™

One Design
One Server
One User Experience

Installing Actuate BIRT Designer Professional

This documentation has been created for software version 11.0.5.

It is also valid for subsequent software versions as long as no new document version is shipped with the product or is published at <https://knowledge.opentext.com>.

Open Text Corporation

275 Frank Tompa Drive, Waterloo, Ontario, Canada, N2L 0A1

Tel: +1-519-888-7111

Toll Free Canada/USA: 1-800-499-6544 International: +800-4996-5440

Fax: +1-519-888-0677

Support: <https://support.opentext.com>

For more information, visit <https://www.opentext.com>

Copyright © 2017 Actuate. All Rights Reserved.

Trademarks owned by Actuate

“OpenText” is a trademark of Open Text.

Disclaimer

No Warranties and Limitation of Liability

Every effort has been made to ensure the accuracy of the features and techniques presented in this publication. However, Open Text Corporation and its affiliates accept no responsibility and offer no warranty whether expressed or implied, for the accuracy of this publication.

Document No. 170215-2-745510 February 15, 2017

Contents

Introduction	iii
Understanding ActuateOne	iii
About Actuate BIRT Designer Professional documentation	iv
Obtaining documentation	v
Using PDF documentation	v
Obtaining late-breaking information and documentation updates	vi
Obtaining technical support	vi
About supported and obsolete products	vi
Typographical conventions	vi
Syntax conventions	vii
 Chapter 1	
Installing Actuate BIRT Designer Professional	1
About Actuate BIRT Designer Professional	2
Obtaining the Actuate BIRT Designer Professional license key file	2
Installing the Actuate BIRT Designer Professional license key	2
Installing Actuate BIRT Designer Professional	3
Updating online documentation and localization resources	9
About the Actuate BIRT Designer Professional eclipse directories	10
Replacing the datasources.xml file in your BIRT Designer Professional installation	10
 Index	13

Understanding ActuateOne

ActuateOne™ includes the Release 11 series of Actuate® Corporation's value-added products for the Eclipse BIRT open source project. ActuateOne institutes a paradigm shift in Business Intelligence technology from individualized tools to a suite of integrated capabilities within a single environment. ActuateOne is one designer and one server in one integrated environment providing a single unified user experience. A common architecture is precisely what today's information-rich global environment requires for development and deployment. This unified Actuate technology continues to enable information management and delivery while supporting advanced security, massive scalability, flexibility through programming, and reuse. ActuateOne realizes our corporate vision of a single user experience by providing extended new analytics capabilities reaching a broader spectrum of users. The new dashboard functionality supports building gadgets to enhance the visual presentation of information. Export to Excel® and other formats integrates Actuate output with other tools on the end-user desktop. Actuate's cloud-ready server supports elastic clustering for dynamic provision of uninterrupted efficient service.

Information, live demos, and endorsements about this release are available from birt-exchange.com and actuate.com. The Actuate site also makes "The Forrester Wave™: Open Source Business Intelligence (BI), Q3 2010" report freely available. The report recognizes Actuate and its value-added offerings for BIRT as a leader in Open Source Business Intelligence.

About Actuate BIRT Designer Professional documentation

The documentation includes the materials described in Table I-1. You can obtain HTML and PDF files from developer.actuate.com. Documentation updates are created in response to customer requirements.

Table I-1 Product documentation


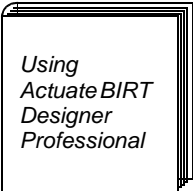
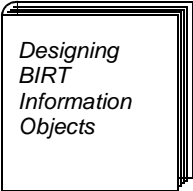
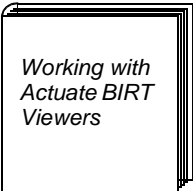
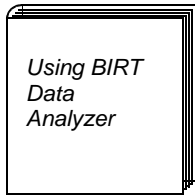
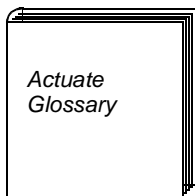
For information about this topic	See the following resource
Documentation updates	Updated HTML help and PDF files posted on developer.actuate.com .
Installing Actuate BIRT Designer Professional	
Using Actuate BIRT Designer Professional and additional data drivers Using Flash functionality and HTML buttons in a report design Deploying BIRT reports to Actuate BIRT iServer, configuring data source connections and fonts on iServer, using encryption	
Accessing a BIRT Information Object and creating information object queries Creating and caching information objects Actuate SQL reference Configuring database types Mapping data types, functions, and operators	
Viewing, navigating, and editing BIRT reports Formatting reports, organizing data, and hiding and filtering data in reports Modifying charts and cross tabs Reference for configuring BIRT viewer and BIRT Viewer URIs	

Table I-1 Product documentation

For information about this topic	See the following resource
Analyzing data Using a cross tab to organize, format, calculate, and filter data Working with charts Exporting data and printing Customizing Data Analyzer	 <p><i>Using BIRT Data Analyzer</i></p>
Glossary	 <p><i>Actuate Glossary</i></p>

Obtaining documentation

Actuate provides technical documentation in PDF and HTML formats. Actuate products access HTML-format documentation from the Actuate web site. If you do not have web access or prefer to use documentation hosted on your local system, install the documentation from the Online Documentation and Localization Resource Files package. You can download PDF or view HTML versions of the documentation from developer.actuate.com. If you purchase the product, you can also download documentation from OpenText My Support. If you select the typical setup when you install from the downloaded `ActuateLocalizationandOnlineDocumentation.exe`, the installation creates the `ACTUATE_HOME\Manuals` directory.

Using PDF documentation

In each book, the table of contents and the index page numbers contain links to the corresponding topics in the text. In the table of contents, you access the link by positioning the pointer over the topic. In the index, you access the link by positioning the pointer over the page number.

The `ACTUATE_HOME\Manuals` directory contains a file, `master-index.pdx`, which is an Adobe Acrobat Catalog utility that can search all the documents in the Actuate Manuals directory. This tool provides a convenient way to find a particular topic in Actuate documentation.

Obtaining late-breaking information and documentation updates

The release notes contain late-breaking news about Actuate products and features. The release notes are available on OpenText My Support at the following URL:

<https://support.opentext.com>

A new user must first register on the site and log in to view the release notes.

Updates to documentation in PDF form are available on OpenText My Support or at the following URL:

<http://www.developer.actuate.com>

Alternatively, after installing Actuate release 11 products, use Start→Programs→Actuate 11→Update Documentation to access this URL.

Obtaining technical support

You can contact customer support by submitting a ticket. To submit a ticket, go to the following URL:

<https://support.opentext.com>

About supported and obsolete products

The Actuate Support Lifecycle Policy and Supported Products Matrix are available on OpenText My Support. You can access this site at the following URL:

<https://support.opentext.com>

Typographical conventions

Table I-2 describes the typographical conventions in this document.

Table I-2 Typographical conventions

Item	Convention	Example
Code examples	Monospace	<code>Dim Text1 As String</code>
File names	Initial capital letter, except where file names are case-sensitive	Detail.roi

Table I-2 Typographical conventions

Item	Convention	Example
Key combination	A + sign between keys means to press both keys at the same time	Ctrl+Shift
Menu items	Capitalized, no bold	File
Submenu items	Separated from the main menu item with a small arrow	File→New
User input or user response	Monospace	M*16*
User input in XML and Java code	Monospace italics	chkjava.exe cab_name.cab

Syntax conventions

Table I-3 describes the symbols used to present syntax.

Table I-3 Syntax conventions

Symbol	Description	Example
[]	Optional item Array subscript	[Alias<alias name>] matrix[]
{ }	Groups two or more mutually exclusive options or arguments when used with a pipe Defines array contents	{While Until} {0, 1, 2, 3}
	Delimiter of code block Separates mutually exclusive options or arguments in a group Java OR operator	public AJCDesigner() { } Exit {Do For Function Sub} int length 4
< >	Argument you must supply Delimiter in XML	<expression to format> <xsd:sequence>

Installing Actuate BIRT Designer Professional

This chapter contains the following topics:

- About Actuate BIRT Designer Professional
- Obtaining the Actuate BIRT Designer Professional license key file
- Installing the Actuate BIRT Designer Professional license key
- Installing Actuate BIRT Designer Professional
- Updating online documentation and localization resources
- About the Actuate BIRT Designer Professional eclipse directories
- Replacing the datasources.xml file in your BIRT Designer Professional installation

About Actuate BIRT Designer Professional

Actuate BIRT Designer Professional is a report designer for report developers who want to customize report designs with additional Java code. Actuate BIRT Designer Professional installs the full Eclipse workbench. This chapter describes how to install Actuate BIRT Designer Professional.

Obtaining the Actuate BIRT Designer Professional license key file

To register as a new user and obtain a new license file for a product, go to OpenText My Support at the following location:

<https://support.opentext.com> (Log in required)

Choose License Keys. Then, submit a ticket.

If you are a maintenance customer, you should have login information for OpenText My Support. If you do not have access, please contact your OpenText sales representative.

If you are not a direct OpenText customer, contact the partner or distributor who supplies the product for the license file. If you have a problem obtaining a license file from this source, please contact your OpenText sales representative.

Installing the Actuate BIRT Designer Professional license key

You receive the Actuate BIRT Designer Professional license key from OpenText Licensing when you purchase the product. The file name for an Actuate BIRT Designer Professional license key is:

Actuate_BRD_key_<ID>.xml

Supply the license key when prompted by the installation program. The program installs Actuate BIRT Designer Professional as an Eclipse component.

For Actuate BIRT Designer Professional, the install program copies the license file to the following location:

```
C:\Program Files (x86)\Actuate11\BRDPro\eclipse\plugins
  \com.actuate.birt.report.viewer_<version>\portal\WEB-INF
```

All Actuate BIRT Designer Professional instances must use a single license file. If you have multiple Actuate BIRT instances running, each installation must reference the same license file.

Installing Actuate BIRT Designer Professional

You install Actuate BIRT Designer Professional using the installation wizard. The installation wizard:

- Asks you to accept or decline the license agreement
- Prompts you to set the install location. On a Windows 7 system, the default location is:

```
C:\Program Files (x86)\Actuate<Release family number>\BRDPro
```

where <Release family number> is the first number of the Actuate product suite release number. For example, Actuate BIRT Designer Professional Release 11 series uses a directory named Actuate11.

- Installs the Eclipse workbench into BRDPro\eclipse
- Copies Actuate BIRT Designer Professional features into:
BRDPro\eclipse\features
- Copies Actuate BIRT Designer Professional plug-ins and JAR files into:
BRDPro\eclipse\plugins
- Creates an entry in the Start menu for Actuate BIRT Designer Professional
The entry is BIRT Designer Professional and is under the Actuate <Release family number> group. For example, Actuate BIRT Designer Professional Release 11 series is in the Actuate 11 group in the Start menu.

How to install Actuate BIRT Designer Professional on Microsoft Windows systems

To install BIRT Designer Professional, perform the following tasks:

- 1 Run the ActuateBIRTDesignerProfessional.exe file.

A welcome message appears, as shown in Figure 1-1. Choose Next.

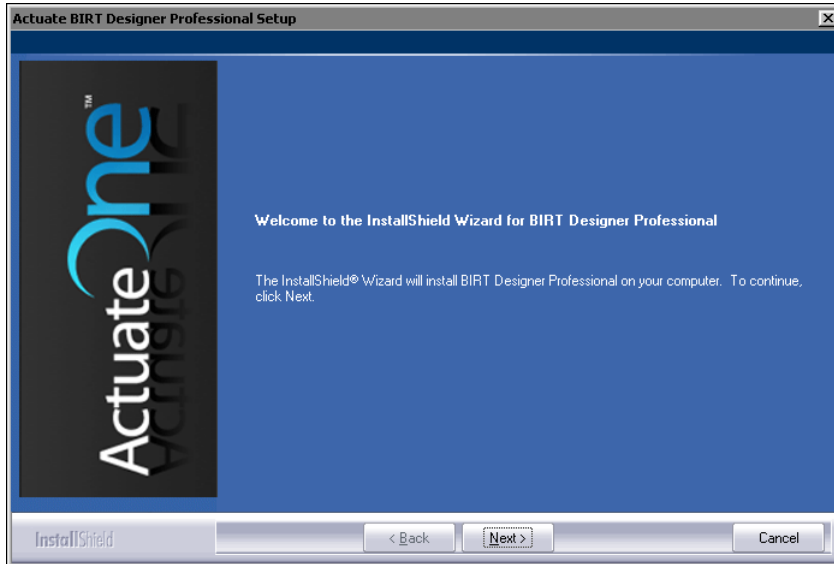


Figure 1-1 Welcome message

- 2 Read and accept the license agreement, as shown in Figure 1-2. Choose Next.



Figure 1-2 License agreement

- 3 Setup prompts to install prerequisite software, as shown in Figure 1-3. Choose Next.

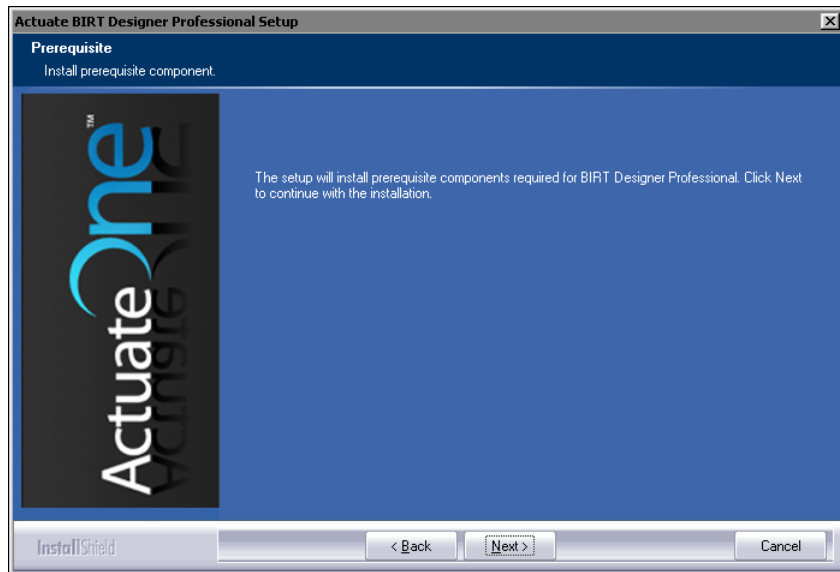


Figure 1-3 Accepting the prerequisite components installation

- 4 Accept the default destination folder. On a Windows 7 Professional system, the default program location is C:\Program Files(x86)\Actuate11\BRDPro, as shown in Figure 1-4. Select Typical, then choose Next.

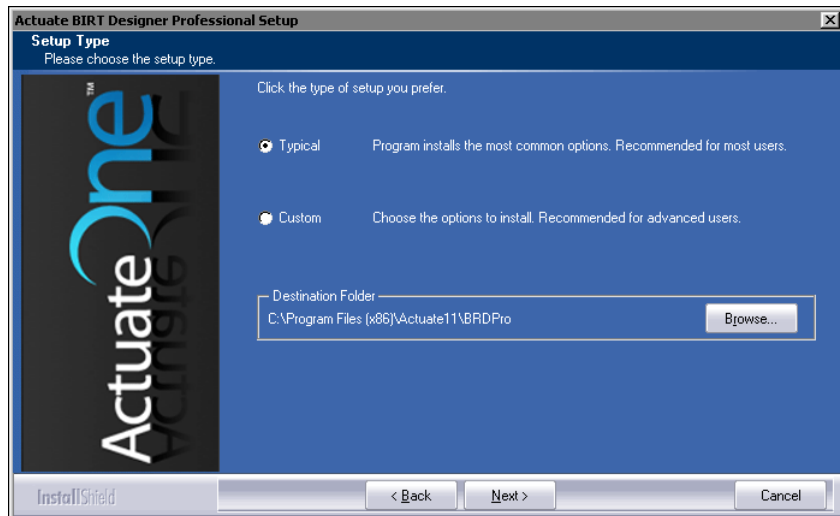


Figure 1-4 Choosing the destination folder in setup type

Alternatively, to install specific features, select Custom, then choose Next, as shown in Figure 1-5.

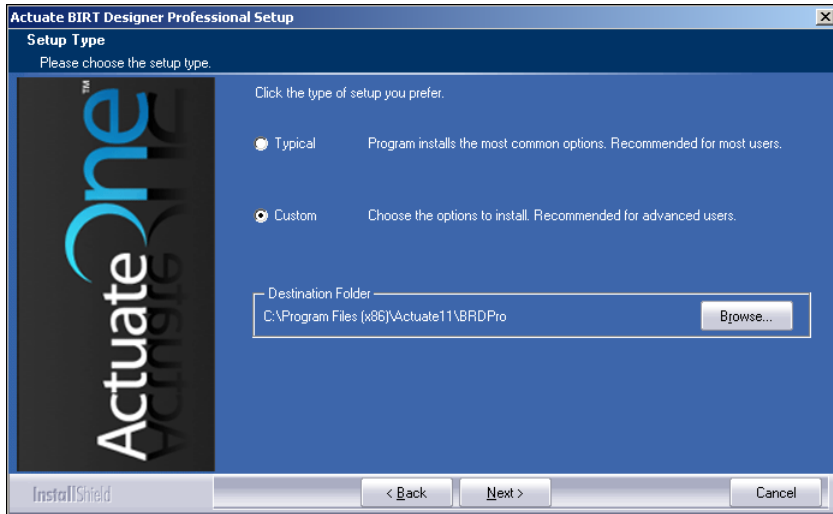


Figure 1-5 Specifying a custom installation

- 5 Accept the Evaluation License option, as shown in Figure 1-6. Alternatively, select Use the license you have purchased. Browse to that file. Then, choose Next.

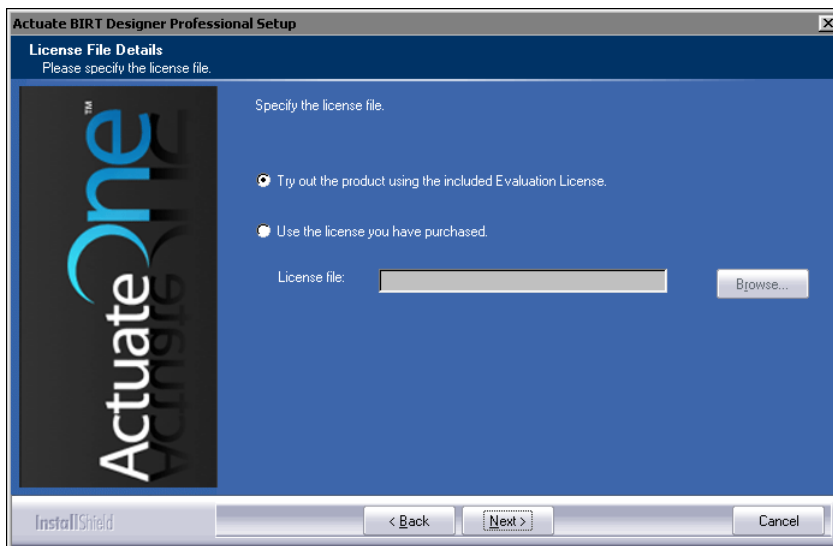


Figure 1-6 Selecting a license option

If customizing your installation, select features to install, as shown in Figure 1-7. Then, choose Next.

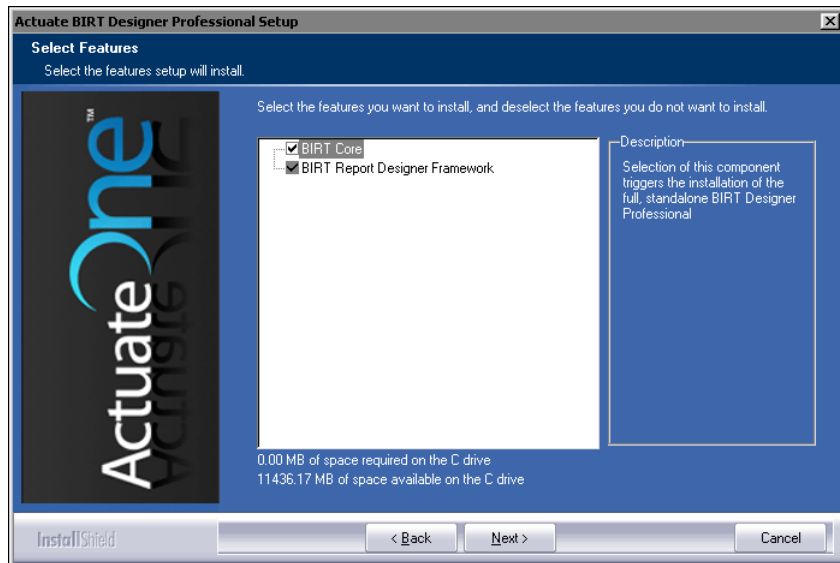


Figure 1-7 Selecting features to install

- 6 In Start Copying Files, review installation settings. To change settings, choose Back. To start copying files, choose Next, as shown in Figure 1-8.

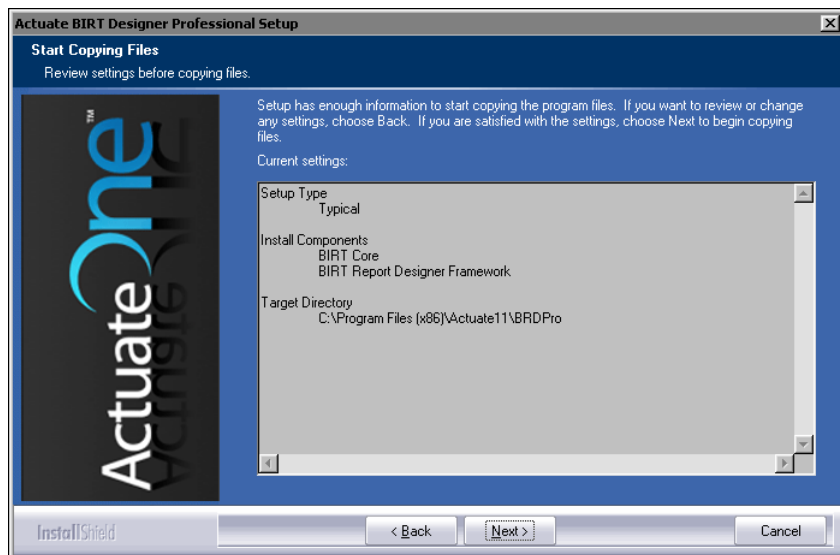


Figure 1-8 Reviewing installation settings

- 7 Setup Status displays the install progress as shown in Figure 1-9. To stop the installation, choose Cancel.

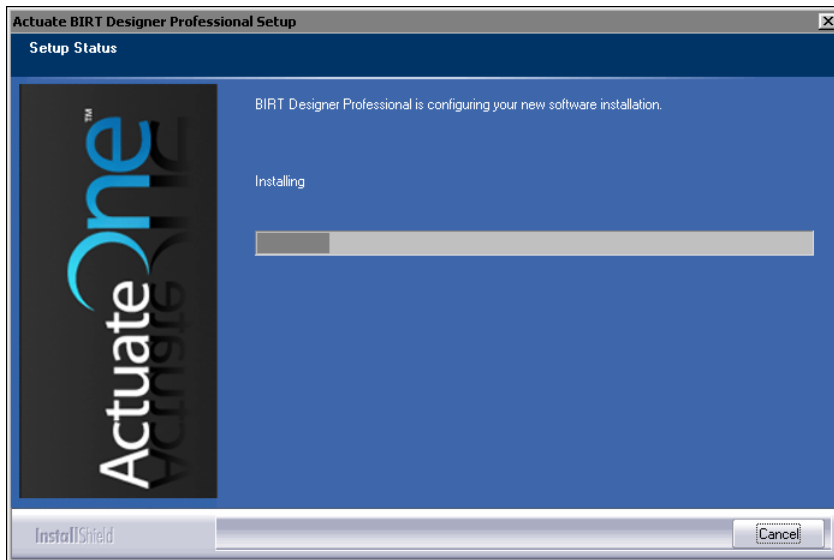


Figure 1-9 Monitoring installation progress

- 8 When installation progress completes, a message that BIRT Designer Professional installed successfully appears, as shown in Figure 1-10. To exit the installation wizard, choose Finish.

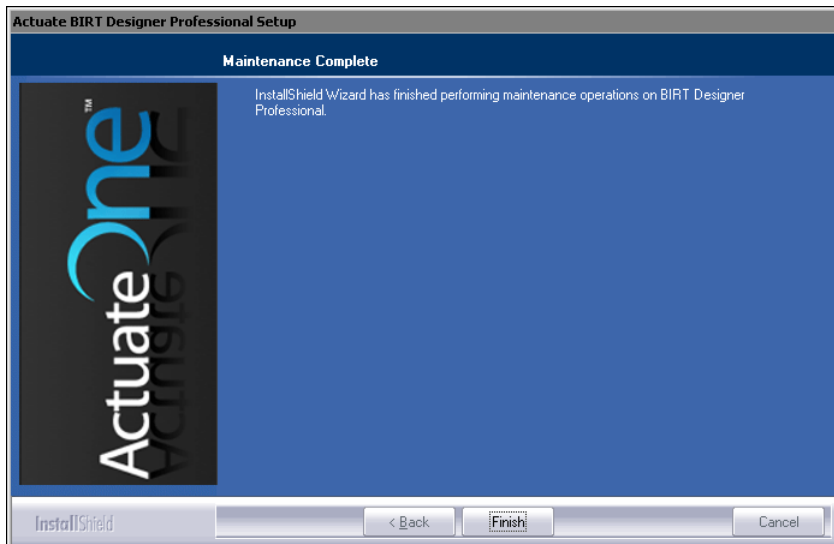


Figure 1-10 Exiting the installation wizard

The installation program installs the BIRT Designer Professional icon on the Start menu, as shown in Figure 1-11.



Figure 1-11 BIRT Designer Professional icon

How to use online documentation on your local system

Actuate products access HTML-format documentation from the Actuate web site. If you do not have web access or prefer to use documentation hosted on your local system, perform the following steps:

- 1 Close BIRT Designer Professional.
- 2 Choose Start→Programs→Actuate 11→Update Documentation.
- 3 Follow the instructions to install the online documentation, including online help and PDF files of the product manuals.
- 4 Choose Start→Programs→Actuate 11→Switch Help Location <Release and Service Pack>.
- 5 In Switch Help Location <Release and Service Pack>, select Use local help. Then, choose OK. When you open BIRT Designer Professional, it accesses online help from the local system.

To uninstall Actuate BIRT Designer Professional, use Add/Remove Programs in Control Panel. The installation wizard guides you through the uninstall process. When prompted whether to remove the setup directory, choose Yes if you plan to reinstall. You must clean up the installation environment by removing files from a previous installation, such as an expired license file, to reinstall the product.

Updating online documentation and localization resources

Both documentation and localization resource file updates can become available between releases. The Actuate Localization and Online Documentation Update tool provides replacement files and additional files for PDF documentation, online help, and localization of installed Actuate products. The tool is available from OpenText My Support, at the following URL:

<https://support.opentext.com>

Use the Actuate Localization and Online Documentation Update tool that corresponds to the release of your Actuate products. For example, if you have Actuate 11, install the Actuate Localization and Online Documentation Update for Release 11. If no update tool for your release appears on OpenText My Support, no updates exist for the release.

About the Actuate BIRT Designer Professional eclipse directories

Upon completing the install process, the Eclipse installation in the report designer eclipse directories contains a fully functional version of BIRT that requires no further Eclipse downloads or installs. Actuate BIRT Designer Professional installs the full Eclipse workbench in the eclipse subdirectory.

The eclipse subdirectories of Actuate BIRT Designer Professional includes the following additional Actuate components to provide more functionality:

- Language properties files for standard templates
- A themes library
- ODA JDBC drivers
- Localized JAR files for various user interface components
- Eclipse features and JAR files that offer additional functionality, including:
 - The ability to publish a report to Actuate BIRT iServer
 - An Actuate Information Object data source

Replacing the datasources.xml file in your BIRT Designer Professional installation

The IO Design perspective in BIRT Designer Professional provides several preconfigured database types to support creating information objects including DB2, Oracle, and SQL Server. If you want to configure your own database types, for example Teradata, you must modify the file `datasources.xml`. In release 11 Service Pack 3 and earlier, `datasources.xml` installs with BIRT iServer, but not with BIRT Designer Professional. When you upgrade iServer, any customizations made to `datasources.xml` are preserved. In release 11 Service Pack 5, `datasources.xml` also installs with BIRT Designer Professional. The `datasources.xml` file on the desktop, however, must be the same as the `datasources.xml` file on iServer. Therefore, if you have modified the `datasources.xml` file you are using with iServer, after installing BIRT Designer Professional release 11 Service Pack 5, you must replace the BIRT Designer Professional `datasources.xml` file with the iServer `datasources.xml` file. The iServer `datasources.xml` file resides in:

```
$AC_SERVER_HOME/etc/data_integration
```

The BIRT Designer Professional datasources.xml file resides in:

```
<Actuate11_HOME>\BRDPro\eclipse\plugins  
  \com.actuate.ais.embeddable_<version>\Config\aisconfigfiles  
  \etc\data_integration
```


Index

A

- accessing online documentation v
- Actuate BIRT license keys 2
- Actuate BIRT licensing options for 2
- ActuateBIRTDesignerProfessional.exe 3
- ActuateLocalizationandOnlineDocumentation.exe v
- adding
 - license keys 2
- Adobe Acrobat Catalog v

B

- BIRT Designer Professional
 - installing 3
 - overview 2

C

- changing
 - licensing options 2
- current release iv, vi, 9
- customer licenses 2

D

- data source plug-in 10
- database types 10
- datasources.xml 10
- default directories 10
- destination folders 5
- directories 10
- directories, installation default 5
- documentation
 - conventions used in vi
 - obtaining v
- documentation updates 9
- downloading
 - documentation v
- drivers 10

E

- eclipse directory 10

- Eclipse features 10
- Eclipse workbench 3, 10

F

- features 3
- files
 - installing license key 2

H

- help
 - updating 9

I

- index (online documentation) v
- information object data sources 10
- installation
 - Actuate BIRT license keys 2
 - BIRT Designer Professional 3
 - installation wizard 3
 - installation, performing the tasks of 3
 - internationalization 10
 - IO Design perspective 10
- iServer System
 - installing Actuate BIRT license keys and 2

J

- .jar files 3, 10
- JDBC drivers 10

L

- language properties files 10
- language settings 7
- libraries 10
- license agreement 4
- license files
 - obtaining 2
- license key files 2
- licensing options 2
- licensing support (Actuate) 2
- links v

Locale Information settings 7
locales
 designing reports and 10
 updating resources for 9
Localization and Online Documentation
 Update tool 9

M

maintenance customers 2
Manuals directory v
master index
 finding v

O

ODA JDBC drivers 10
online documentation 9
online documentation, downloading v
options (licensing) 2

P

PDF documentation v, 9
plug-ins 3
product updates 9
publishing reports 10

R

regional settings 7
release notes iv, vi
reports
 publishing 10
resource files 9

S

Start menu 3
supported products page vi
syntax conventions (documentation) vii

T

templates 10
themes library 10
typographic conventions (documentation) vi

U

updates 9

W

Windows systems
 installing Actuate BIRT license keys for 2
workbench 3, 10