

ActuateOne™

One Design
One Server
One User Experience

Installing e.Report Designer Professional

This documentation has been created for software version 11.0.5.

It is also valid for subsequent software versions as long as no new document version is shipped with the product or is published at <https://knowledge.opentext.com>.

Open Text Corporation

275 Frank Tompa Drive, Waterloo, Ontario, Canada, N2L 0A1

Tel: +1-519-888-7111

Toll Free Canada/USA: 1-800-499-6544 International: +800-4996-5440

Fax: +1-519-888-0677

Support: <https://support.opentext.com>

For more information, visit <https://www.opentext.com>

Copyright © 2017 Actuate. All Rights Reserved.

Trademarks owned by Actuate

“OpenText” is a trademark of Open Text.

Disclaimer

No Warranties and Limitation of Liability

Every effort has been made to ensure the accuracy of the features and techniques presented in this publication. However, Open Text Corporation and its affiliates accept no responsibility and offer no warranty whether expressed or implied, for the accuracy of this publication.

Document No. 170215-2-130510 February 15, 2017

Contents

Introduction	iii
Understanding ActuateOne	iii
About the Actuate e.Report Designer Professional documentation	iv
Accessing examples	vi
Obtaining documentation	vi
Using PDF documentation	vi
Obtaining late-breaking information and documentation updates	vi
Obtaining technical support	vii
About supported and obsolete products	vii
Typographical conventions	vii
Syntax conventions	viii
Installing e.Report Designer Professional	1
About Actuate e.Report Designer Professional	1
Installing Actuate e.Report Designer Professional	2
Starting e.Report Designer Professional	7
Starting Information Object Designer	7
Updating online documentation and localization resources	8
Index	9

Understanding ActuateOne

ActuateOne™ includes the Release 11 series of Actuate® Corporation's value-added products for the Eclipse BIRT open source project. ActuateOne institutes a paradigm shift in Business Intelligence technology from individualized tools to a suite of integrated capabilities within a single environment. ActuateOne is one designer, one server, one integrated environment providing a single unified user experience. A common architecture is precisely what today's information-rich global environment requires for development and deployment. This unified Actuate technology continues to enable information management and delivery while supporting advanced security, massive scalability, flexibility through programming, and reuse. ActuateOne realizes our corporate vision of a single user experience by providing extended new analytics capabilities reaching a broader spectrum of users. The new dashboard functionality supports building gadgets to enhance the visual presentation of information. Export to Excel® and other formats integrates Actuate output with other tools on the end-user desktop. Actuate's cloud-ready server supports elastic clustering for dynamic provision of uninterrupted efficient service.

Information, live demos, and endorsements about this release are available from birt-exchange.com and actuate.com. The Actuate site also makes "The Forrester Wave™: Open Source Business Intelligence (BI), Q3 2010" report freely available. The report recognizes Actuate and its value-added offerings for BIRT as a leader in Open Source Business Intelligence.

About the Actuate e.Report Designer Professional documentation

The documentation includes the materials described in Table I-1. You can obtain HTML and PDF files from developer.actuate.com. Documentation updates are created in response to customer requirements.

The documentation for e.Report Designer Professional also includes the programming materials described in Table I-2.

Table I-1 Product documentation




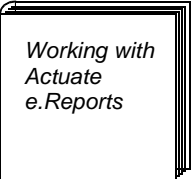
For information about this topic	See the following resource
Documentation updates	Updated HTML and PDF files posted on developer.actuate.com .
Installing Actuate e.Report Designer Professional	
Overview of Actuate reporting concepts Designing reports using the graphical user interface and programming capabilities of e.Report Designer Professional	
Overview of data access concepts Accessing data from databases, information objects, text files, Actuate Query output, and ODBC data sources Overview and reference guide for creating a driver to access custom data sources	
Viewing and searching Actuate Basic reports using the DHTML viewer	

Table I-1 Product documentation

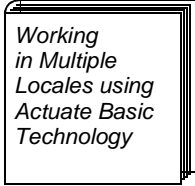
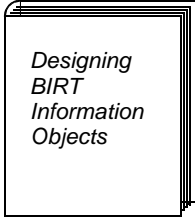
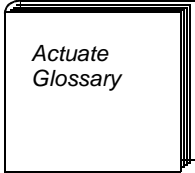
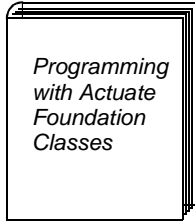
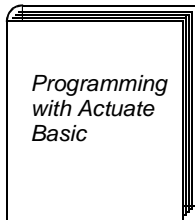
For information about this topic	See the following resource
Formatting report data for multiple locales Report encoding Designing reports with right-to-left orientation	 <p><i>Working in Multiple Locales using Actuate Basic Technology</i></p>
Overview of Actuate information object concepts Creating information objects, projects, connection definitions, and maps Building and publishing projects Actuate SQL reference information Configuring database types	 <p><i>Designing BIRT Information Objects</i></p>
Glossary	 <p><i>Actuate Glossary</i></p>

Table I-2 Programming documentation

For information about this topic	See the following resource
Overview of Actuate Foundation Classes Overview of how to work with classes and objects Reference for Actuate Foundation Classes, including class inheritance, hierarchy, and descriptions of properties, variables, and methods	 <p><i>Programming with Actuate Foundation Classes</i></p>
Overview of Actuate Basic syntax and coding conventions Working with Actuate Basic variables, data types, and procedures Reference for Actuate Basic programming, including descriptions of statements, functions, data types, keywords, and operators	 <p><i>Programming with Actuate Basic</i></p>

Accessing examples

The Examples folder in the product directory contains report examples. Each sample report folder contains a variety of files, often including a text file that discusses how the example works.

Obtaining documentation

Actuate e.Report Designer Professional uses documentation hosted on your local system. Install the documentation from the downloaded ActuateLocalizationandOnlineDocumentation.exe. You can also view PDF or HTML versions of the documentation from developer.actuate.com.

Using PDF documentation

In each book, the table of contents and the index page numbers contain links to the corresponding topics in the text. In the table of contents, you access the link by positioning the pointer over the topic. In the index, you access the link by positioning the pointer over the page number.

The ACTUATE_HOME\Manuals directory contains a file, master-index.pdx, which is an Adobe Acrobat Catalog utility that can search all the documents in the Actuate Manuals directory. This tool provides a convenient way to find a particular topic in Actuate documentation.

Obtaining late-breaking information and documentation updates

The release notes contain late-breaking news about Actuate products and features. The release notes are available on OpenText My Support at the following URL:

<https://support.opentext.com>

A new user must first register on the site and log in to view the release notes.

Updates to documentation in PDF form are available on OpenText My Support or at the following URL:

<http://www.developer.actuate.com>

Alternatively, after installing Actuate Release 11 products, use Start→Programs→Actuate 11→Update Documentation to access this URL.

Obtaining technical support

You can contact customer support by submitting a ticket. To submit a ticket, go to the following URL:

<https://support.opentext.com>

About supported and obsolete products

The Actuate Support Lifecycle Policy and Supported Products Matrix are available on OpenText My Support. You can access this site at the following URL:

<https://support.opentext.com>

Typographical conventions

Table I-3 describes the typographical conventions in this document.

Table I-3 Typographical conventions

Item	Convention	Example
Code examples	Monospace	<code>Dim Text1 As String</code>
File names	Initial capital letter, except where file names are case-sensitive	<code>Detail.roi</code>
Key combination	A + sign between keys means to press both keys at the same time	<code>Ctrl+Shift</code>
Menu items	Capitalized, no bold	<code>File</code>
Submenu items	Separated from the menu item by a small arrow	<code>File→New</code>
User input or user response	Monospace	<code>M*16*</code>
User input in XML and Java code	Monospace italics	<code>chkjava.exe</code> <code>cab_name.cab</code>

Syntax conventions

Table I-4 describes the symbols used to present syntax.

Table I-4 Syntax conventions

Symbol	Description	Example
[]	Optional item Array subscript	[Alias<alias name>] matrix[]
{ }	Groups two or more mutually exclusive options or arguments when used with a pipe Defines array contents	{While Until} {0, 1, 2, 3}
	Delimiter of code block Separates mutually exclusive options or arguments in a group	public ACJDesigner() { } Exit {Do For Function Sub}
< >	Java OR operator Argument you must supply Delimiter in XML	int length 4 <expression to format> <xsd:sequence>

Installing e.Report Designer Professional

About Actuate e.Report Designer Professional

Actuate e.Report Designer Professional is a report designer for report developers who design, build and distribute structured content. e.Report Designer Professional supports beginning report developers and experienced report developers who leverage programming.

This chapter describes how to install Actuate e.Report Designer Professional Release 11 series. Installing Actuate e.Report Designer Professional also installs Actuate BIRT Information Object Designer. To overwrite an existing Information Object Designer installation during the e.Report Designer Professional installation, you must instruct InstallShield™ Wizard to install e.Report Designer Professional in the directory that contains the Information Object Designer directory. For example, if the Information Object Designer installation is located in the C:\MyActuate\IOD directory, specify the following directory for the e.Report Designer Professional installation:

```
C:\MyActuate\eRDPro
```

If you specify a different directory from the one that contains the Information Object Designer's installation directory, e.Report Designer Professional's installation installs another instance of Information Object Designer. If you later choose to uninstall Information Designer, both instances of Information Object Designer are removed from the system.

The Release 11 series software does not use configuration information from a previous release. For information about upgrading, see *Release Notes* for the current release.

Installing Actuate e.Report Designer Professional

Make sure the user account you use to install e.Report Designer Professional is a member of the Administrators group.

Before you install Actuate e.Report Designer Professional, close all Actuate applications and stop Actuate services.

How to install e.Report Designer Professional

- 1 Log in to Windows as Administrator.
- 2 Double-click ActuateeReportDesignerProfessional.exe. InstallShield Wizard extracts the files necessary to install e.Report Designer Professional on your computer. After a few moments, Welcome to the InstallShield Wizard for Actuate e.Report Designer Professional appears, as shown in Figure 1-1. Choose Next.

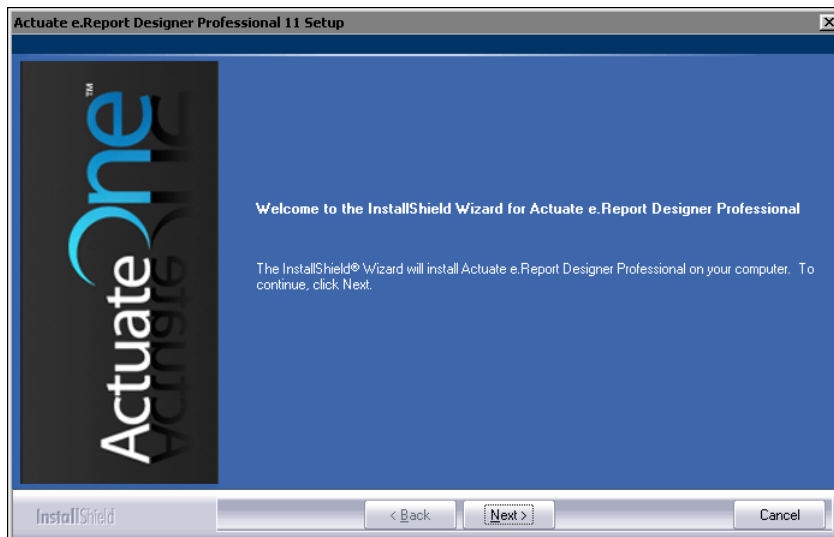


Figure 1-1 Starting the InstallShield Wizard for Actuate e.Report Designer Professional

- 3 In License Agreement, read the agreement. Select I accept the terms of the license agreement, as shown in Figure 1-2. Then, choose Next.



Figure 1-2 Accepting the license agreement

- 4 In Setup Type, select Typical. The default program location is C:\Program Files (x86)\Actuate11\veRDPro appears as shown in Figure 1-3. Choose Next.

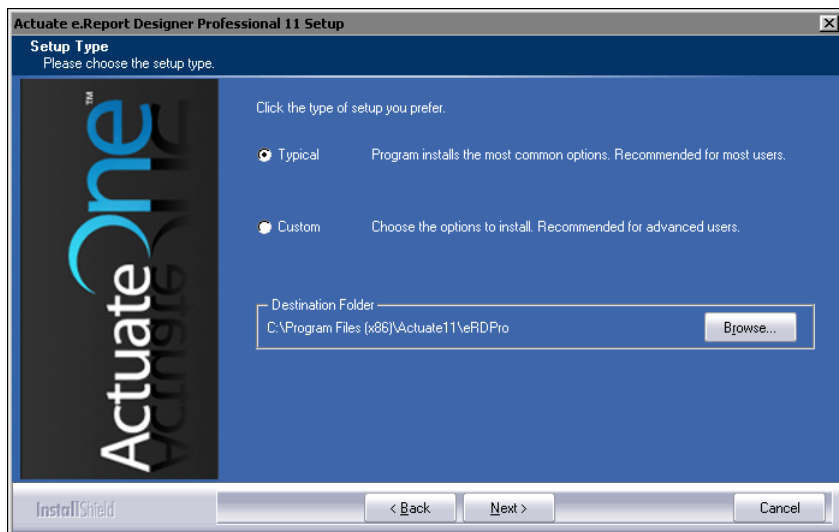


Figure 1-3 Selecting the typical setup type

In Locale Information, select a locale. The illustrations in this manual use the English (United States) locale, as shown in Figure 1-4. The computer's operating system language and regional settings must be compatible with the default locale settings you configure during installation. Choose Next.

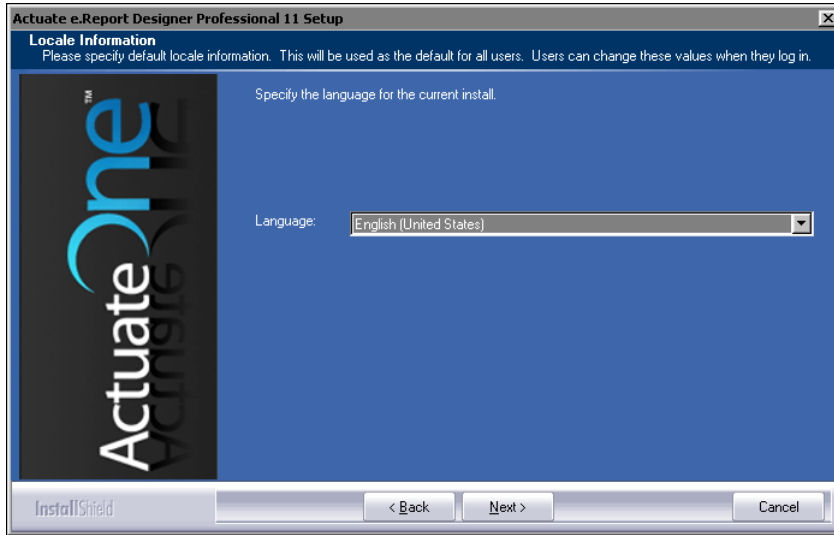


Figure 1-4 Selecting the US English locale

- 5 In Start Copying files, verify the program components to be installed, as shown in Figure 1-5. Then, choose Next.

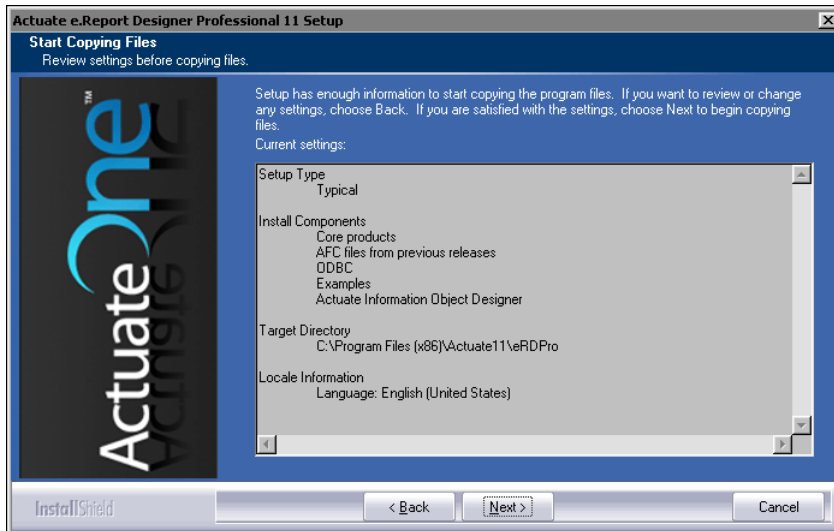


Figure 1-5 Verifying program components before copying files

Setup Status displays messages about the progress of the installation. First, the wizard installs Actuate Information Object Designer, as shown in Figure 1-6.

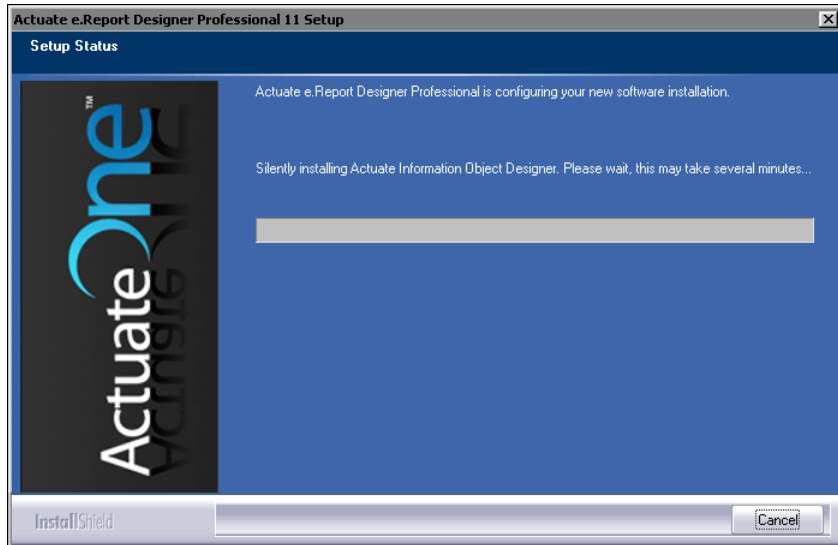


Figure 1-6 Monitoring the installation of Information Object Designer

Then, the wizard installs Actuate e.Report Designer Professional, as shown in Figure 1-7.

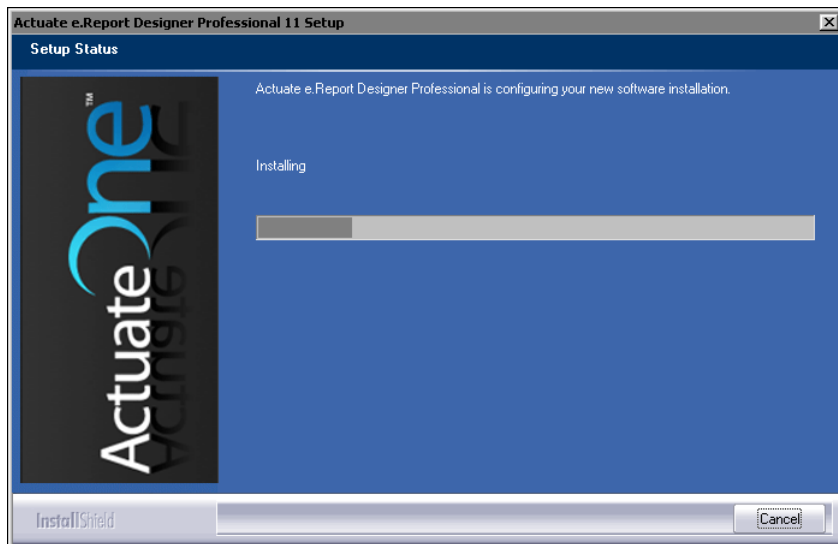


Figure 1-7 Monitoring the installation of e.Report Designer Professional

- 6 The final step of the installation depends on whether Windows determines that a reboot is necessary:
 - If prompted to view the ReadMe file, choose No.
To complete the installation wizard, select No, I will restart my computer later, as shown in Figure 1-8. Then, choose Finish.
 - If a reboot is not required, clear I would like to view the ReadMe file, as shown in Figure 1-8. Then, choose Finish to exit the installation wizard.

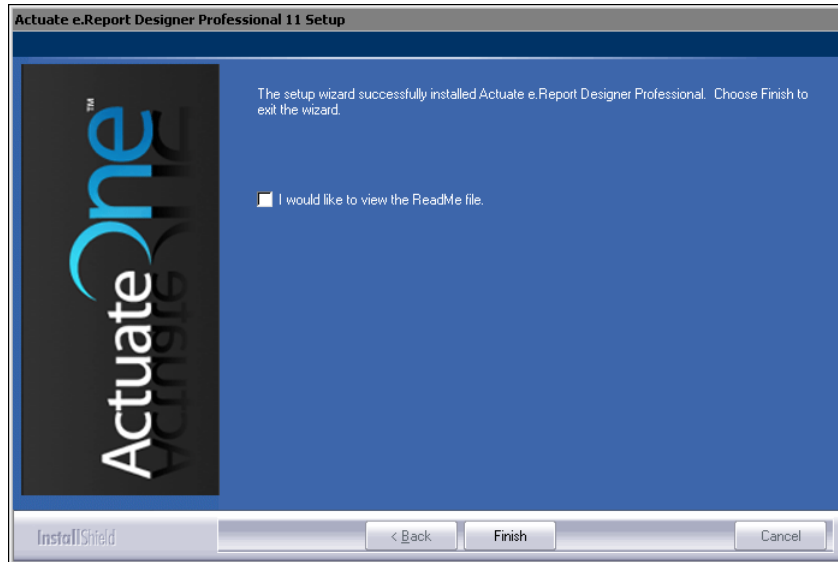


Figure 1-8 Selecting not to view the ReadMe file

- 7 In the message that states how you access documentation, similar to the one in Figure 1-9, choose OK.

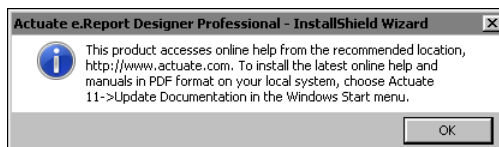


Figure 1-9 Documentation information message

How to use online documentation on your local system

Actuate products access HTML-format documentation from the web. If you do not have web access or prefer to use documentation hosted on your local system, perform the following steps:

- 1 Close e.Report Designer Professional.

- 2 Choose Start→Programs→Actuate 11→Update Documentation.
- 3 Follow the instructions to install the online documentation, including online help and PDF files of the product manuals.
- 4 Choose Start→Programs→Actuate 11→Switch Help Location <Service Pack>.
- 5 In Switch Help Location <Service Pack>, select Use local help. Then, choose OK. When you open e.Report Designer Professional, it accesses online help from the local system.

Starting e.Report Designer Professional

To start e.Report Designer Professional from the Start menu, you must right-click the Start menu item and choose Run as administrator.

To set the executable file to always run as Administrator for every user who uses the computer, log in to Windows as an administrator-level user and perform the following steps:

- 1 Navigate to the \Program Files (x86)\Actuate11\eRDPro\bin folder.
- 2 Right-click erdpro.exe. Choose Properties.
- 3 In erdpro.exe Properties, choose Compatibility. In Compatibility, choose Change settings for all users.
- 4 In erdpro.exe Properties—Compatibility for all users, select Run this program as an administrator. Choose OK.
- 5 In erdpro.exe Properties, choose OK.

Starting Information Object Designer

If you are using the standalone Information Object Designer that installs with e.Report Designer Professional, to start Information Object Designer from the Start menu, you must right-click the Start menu item and choose Run as administrator. Alternatively, start Information Object Designer from a command prompt using the following command:

```
\Program Files (x86)\Actuate11\IOD\IOD.exe -data <path to workspace>
```

For example:

```
\Program Files (x86)\Actuate11\IOD\IOD.exe -data C:/IODWorkspace
```

To set the executable file to always run as Administrator for every user who uses the computer, log in to Windows as an administrator-level user and perform the following steps:

- 1 Navigate to the \Program Files (x86)\Actuate11\IOD folder.
- 2 Right-click iod.exe. Choose Properties.
- 3 In iod.exe Properties, choose Compatibility. In Compatibility, choose Change settings for all users.
- 4 In iod.exe Properties—Compatibility for all users, select Run this program as an administrator. Choose OK.
- 5 In iod.exe Properties, choose OK.

Updating online documentation and localization resources

Both documentation and localization resource file updates can become available between releases. The Actuate Localization and Online Documentation Update tool provides replacement files and additional files for PDF documentation, online help, and localization of installed Actuate products. The tool is available from OpenText My Support at the following URL:

<https://support.opentext.com>

Use the Actuate Localization and Online Documentation Update tool that corresponds to the release of your Actuate products. For example, if you have Actuate 11, install the Actuate Localization and Online Documentation Update for Release 11. If no update tool for your release appears on OpenText My Support, no updates exist for the release.

Index

A

- accessing
 - online documentation vi
 - sample reports vi
- ActuateeReportDesignerProfessional.exe 2
- ActuateLocalizationandOnlineDocumentation.exe vi
- Adobe Acrobat Catalog vi

C

- current release iv, vi

D

- documentation iv
 - conventions used in vii

E

- e.Report Designer Professional
 - documentation for iv
 - installing 2–6
 - overview 1
 - starting 7
- erdpro.exe 7
- example reports. *See* sample reports
- Examples directory vi

I

- index (online documentation) vi
- installation
 - e.Report Designer Professional 2–6
 - Information Object Designer 1
- iod.exe 8

L

- language settings 4
- links vi
- locale settings 4

M

- Manuals directory vi
- master index
 - finding vi

O

- online documentation iv

R

- regional settings 4
- release notes iv, vi
- reporting examples. *See* Examples directory reports
 - accessing sample vi
- Run as administrator command 7

S

- sample reports vi
- starting
 - e.Report Designer Professional 7
 - Information Object Designer 7
- supported products page vii
- syntax conventions (documentation) viii

T

- typographic conventions (documentation) vii

