

Actuate One™

One Design
One Server
One User Experience

**Installing BIRT Spreadsheet
Engine and API**

This documentation has been created for software version 11.0.5.

It is also valid for subsequent software versions as long as no new document version is shipped with the product or is published at <https://knowledge.opentext.com>.

Open Text Corporation

275 Frank Tompa Drive, Waterloo, Ontario, Canada, N2L 0A1

Tel: +1-519-888-7111

Toll Free Canada/USA: 1-800-499-6544 International: +800-4996-5440

Fax: +1-519-888-0677

Support: <https://support.opentext.com>

For more information, visit <https://www.opentext.com>

Copyright © 2017 Actuate. All Rights Reserved.

Trademarks owned by Actuate

“OpenText” is a trademark of Open Text.

Disclaimer

No Warranties and Limitation of Liability

Every effort has been made to ensure the accuracy of the features and techniques presented in this publication. However, Open Text Corporation and its affiliates accept no responsibility and offer no warranty whether expressed or implied, for the accuracy of this publication.

Document No. 170215-2-963510 February 15, 2017

Contents

Introduction	iii
Understanding ActuateOne	iii
About the Actuate BIRT Spreadsheet Engine and API documentation	iv
Obtaining documentation	v
Using PDF documentation	v
Obtaining late-breaking information and documentation updates	vi
Obtaining technical support	vi
About supported and obsolete products	vi
Typographical conventions	vi
Syntax conventions	vii
Installing BIRT Spreadsheet Engine and API	1
About Actuate BIRT Spreadsheet Engine and API	2
Working with OpenText licensing	2
Obtaining the BIRT Spreadsheet Engine and API license key file	2
Installing BIRT Spreadsheet Engine and API	3
Installing the Actuate BIRT Spreadsheet Engine and API license key	3
Installing Actuate BIRT Spreadsheet Designer	4
Starting BIRT Spreadsheet Designer on a Windows 7 system	9
Uninstalling BIRT Spreadsheet Designer	9
Configuring memory usage for BIRT Spreadsheet Designer	9
Index	11

Understanding ActuateOne

ActuateOne™ includes the Release 11 series of Actuate® Corporation's value-added products for the Eclipse BIRT open source project. ActuateOne institutes a paradigm shift in Business Intelligence technology from individualized tools to a suite of integrated capabilities within a single environment. ActuateOne is one designer, one server, one integrated environment providing a single unified user experience. A common architecture is precisely what today's information-rich global environment requires for development and deployment. This unified Actuate technology continues to enable information management and delivery while supporting advanced security, massive scalability, flexibility through programming, and reuse. ActuateOne realizes our corporate vision of a single user experience by providing extended new analytics capabilities reaching a broader spectrum of users. The new dashboard functionality supports building gadgets to enhance the visual presentation of information. Export to Excel® and other formats integrates Actuate output with other tools on the end-user desktop. Actuate's cloud-ready server supports elastic clustering for dynamic provision of uninterrupted efficient service.

Information, live demos, and endorsements about this release are available from birt-exchange.com and actuate.com. The Actuate site also makes "The Forrester Wave™: Open Source Business Intelligence (BI), Q3 2010" report freely available. The report recognizes Actuate and its value-added offerings for BIRT as a leader in Open Source Business Intelligence.

About the Actuate BIRT Spreadsheet Engine and API documentation

The documentation includes the materials described in Table I-1. You can obtain HTML and PDF files from developer.actuate.com. Documentation updates are created in response to customer requirements.

Table I-1 Product documentation

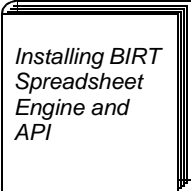
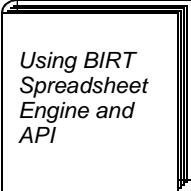

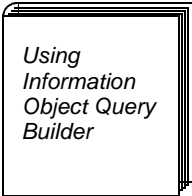
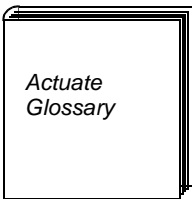
For information about this topic	See the following resource
Documentation updates	Updated HTML help and PDF files posted on developer.actuate.com .
Installing Actuate BIRT Spreadsheet Engine and API Installing and configuring Actuate BIRT Spreadsheet Designer	 <p><i>Installing BIRT Spreadsheet Engine and API</i></p>
Overview of classes Integrating BIRT Spreadsheet technology into applications, applets, and servlets Guide to programming with the API Using custom JSP tags to insert spreadsheets into web pages	 <p><i>Using BIRT Spreadsheet Engine and API</i></p>
Designing and publishing spreadsheet reports using BIRT Spreadsheet Designer Overview of data access concepts Accessing data from databases, other JDBC data sources, text files, and custom data sources Importing, formatting, and manipulating data Using callback classes and VBA code Adding security features	 <p><i>Designing Spreadsheets using BIRT Spreadsheet Designer</i></p>

Table I-1 Product documentation

For information about this topic	See the following resource
Accessing data from Actuate information objects Actuate SQL reference	 The image shows a book cover with the title "Using Information Object Query Builder" written in a serif font. The cover is white with a dark border.
Glossary	 The image shows a book cover with the title "Actuate Glossary" written in a serif font. The cover is white with a dark border.

Obtaining documentation

Actuate provides technical documentation in PDF and HTML formats. Actuate products access HTML-format documentation from the Actuate web site. If you do not have web access or prefer to use documentation hosted on your local system, install the documentation from the Online Documentation and Localization Resource Files package. You can download PDF or view HTML versions of the documentation from developer.actuate.com. If you purchase the product, you can also download documentation from OpenText My Support. If you select the typical setup when you install from the downloaded `ActuateLocalizationandOnlineDocumentation.exe`, the installation creates the `ACTUATE_HOME\Manuals` directory.

Using PDF documentation

In each book, the table of contents and the index page numbers contain links to the corresponding topics in the text. In the table of contents, you access the link by positioning the pointer over the topic. In the index, you access the link by positioning the pointer over the page number.

The `ACTUATE_HOME\Manuals` directory contains a file, `master-index.pdx`, which is an Adobe Acrobat Catalog utility that can search all the documents in the Actuate Manuals directory. This tool provides a convenient way to find a particular topic in Actuate documentation.

Obtaining late-breaking information and documentation updates

The release notes contain late-breaking news about Actuate products and features. The release notes are available on OpenText My Support at the following URL:

<https://support.opentext.com>

A new user must first register on the site and log in to view the release notes.

Updates to documentation in PDF form are available on OpenText My Support or at the following URL:

<http://www.developer.actuate.com>

Alternatively, after installing Actuate release 11 products, use Start→Programs→Actuate 11→Update Documentation to access this URL.

Obtaining technical support

You can contact customer support by submitting a ticket. To submit a ticket, go to the following URL:

<https://support.opentext.com>

About supported and obsolete products

The Actuate Support Lifecycle Policy and Supported Products Matrix are available on OpenText My Support. You can access this site at the following URL:

<https://support.opentext.com>

Typographical conventions

Table I-2 describes the typographical conventions in this document.

Table I-2 Typographical conventions

Symbol	Description	Example
Code examples	Monospace	Dim Text1 As String
File names	Initial capital letter, except where file names are case-sensitive	Detail.roi

Table I-2 Typographical conventions

Symbol	Description	Example
Key combination	A + sign between keys means to press both keys at the same time	Ctrl+Shift
Menu items	Capitalized, no bold	File
Submenu items	Separated from the main menu item with a small arrow	File→New
User input or user response	Monospace	M*16*
User input in XML and Java code	Monospace italics	<i>chkjava.exe</i> <i>cab_name.cab</i>

Syntax conventions

Table I-3 describes the symbols used to present syntax.

Table I-3 Syntax conventions

Item	Description	Example
[]	Optional item Array subscript	[Alias<alias name>] matrix[]
{ }	Groups two or more mutually exclusive options or arguments when used with a pipe Defines array contents	{While Until} {0, 1, 2, 3}
	Delimiter of code block Separates mutually exclusive options or arguments in a group Java OR operator	public myClass() { } Exit {Do For Function Sub} int length 4
< >	Argument you must supply Delimiter in XML	<expression to format> <xsd:sequence>

Installing BIRT Spreadsheet Engine and API

This chapter contains the following topics:

- About Actuate BIRT Spreadsheet Engine and API
- Working with OpenText licensing
- Obtaining the BIRT Spreadsheet Engine and API license key file
- Installing BIRT Spreadsheet Engine and API
- Installing the Actuate BIRT Spreadsheet Engine and API license key
- Installing Actuate BIRT Spreadsheet Designer
- Starting BIRT Spreadsheet Designer on a Windows 7 system
- Configuring memory usage for BIRT Spreadsheet Designer

About Actuate BIRT Spreadsheet Engine and API

Actuate BIRT Spreadsheet Engine and API is a collection of Java APIs that can be used in an application to create and deploy spreadsheet reports. You can use BIRT Spreadsheet Designer to create worksheets and report designs for your BIRT Spreadsheet Engine applets, applications, or servlets. For information about the files that BIRT Spreadsheet Engine and API installs, see *Using BIRT Spreadsheet Engine and API*.

Working with OpenText licensing

OpenText licensing supports running applications that use the BIRT Spreadsheet Engine and API that is contained in the Java library (.jar) file, `essd11.jar`. When you first install BIRT Spreadsheet Engine and API, you can use the Engine for a built-in trial period. This period expires on a pre-defined date. To continue to use the full capabilities of the Engine, you must install the BIRT Spreadsheet Engine and API license key file. To ensure uninterrupted use of the Engine, you can install this license key file at any time during the trial period. Without a license, you can only use the BIRT Spreadsheet API to access Microsoft Excel workbooks.

BIRT Spreadsheet Engine and API requires a valid license key in any deployment environment. If the license file does not exist or is invalid, BIRT Spreadsheet Engine and API writes an error to the diagnostic log file. The application loads, but any attempt to use an BIRT Spreadsheet Engine and API class results in an error. The optional tool, BIRT Spreadsheet Designer, does not require a license.

Obtaining the BIRT Spreadsheet Engine and API license key file

To register as a new user and obtain a new license file for a product, go to OpenText My Support at the following location:

<https://support.opentext.com> (Log in required)

Choose License Keys. Then, submit a ticket.

If you are a maintenance customer, you should have login information for OpenText My Support. If you do not have access, please contact your OpenText sales representative.

If you are not a direct OpenText customer, contact the partner or distributor who supplies the product for the license file. If you have a problem obtaining a license file from this source, please contact your OpenText sales representative.

Installing BIRT Spreadsheet Engine and API

To install BIRT Spreadsheet Engine and API, you extract the engine libraries and supporting examples and documentation from an archive file.

How to install BIRT Spreadsheet Engine and API on Windows and UNIX systems

1 To install BIRT Spreadsheet Engine and API, go to the download site indicated on your receipt e-mail and save the file to your computer.

2 To extract the BIRT Spreadsheet Engine and API files:

- On a Linux or UNIX system, use the following command to unpack the `ess.tar.gz` file:

```
tar zxvf ess.tar.gz
```

- On a Windows system, double-click the following file:

```
ActuateBIRTSpreadsheetEngine.zip
```

Using winzip, extract all files to a local directory. For example, use:

```
C:\ProgramFiles\Actuate11
```

The extraction process installs the BIRT Spreadsheet Engine and API and documentation in the following folder:

```
\spreadsheetengineandapi
```

The documentation includes online help and PDF files of the product manuals.

You can now begin using the product.

Installing the Actuate BIRT Spreadsheet Engine and API license key

You receive the Actuate BIRT Spreadsheet Engine and API license key from OpenText Licensing when you purchase the product. The name for an Actuate BIRT Spreadsheet Engine and API license key file is:

```
eslicense.xml
```

The name of the file that OpenText sends you in an e-mail is:

```
eslicense.xml.txt
```

You must remove the `.txt` extension from the file before you use it.

How to install the BIRT Spreadsheet Engine and API license key in an application development environment

For information about providing the license key in deployment environments, see the appropriate chapters in *Using BIRT Spreadsheet Engine and API*.

- 1 Save the eselicense.xml.txt file onto your local system as eselicense.xml.
- 2 Optionally, put eselicense.xml into a Java archive (JAR) file.
- 3 Add the folder or JAR file that contains the eselicense.xml file to the classpath.

Installing Actuate BIRT Spreadsheet Designer

You install Actuate BIRT Spreadsheet Designer using the installation wizard. The installation wizard:

- Prompts you to set the install location
- Copies Actuate BIRT Spreadsheet Designer program to the install location
- Creates an icon in the Start menu for Actuate BIRT Spreadsheet Designer

How to install on supported Microsoft Windows systems

To install BIRT Spreadsheet Designer, perform the following tasks:

- 1 Run the ActuateBIRTSpreadsheetDesigner.exe file. A welcome message appears, as shown in Figure 1-1. Choose Next.



Figure 1-1 Welcome message

- 2 Read and accept the license agreement, as shown in Figure 1-2. Choose Next.



Figure 1-2 Accepting the license agreement

- 3 Accept the default destination folder, C:\Program Files (x86)\Actuate11\spreadsheet, as shown in Figure 1-3. Select Typical, then choose Next.

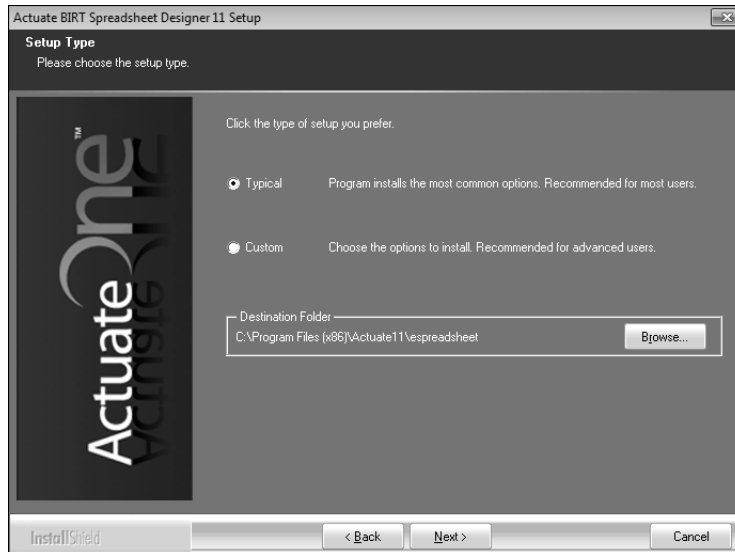


Figure 1-3 Choosing the destination folder in Setup Type

Alternatively, to install specific features, select Custom, then choose Next, as shown in Figure 1-4.

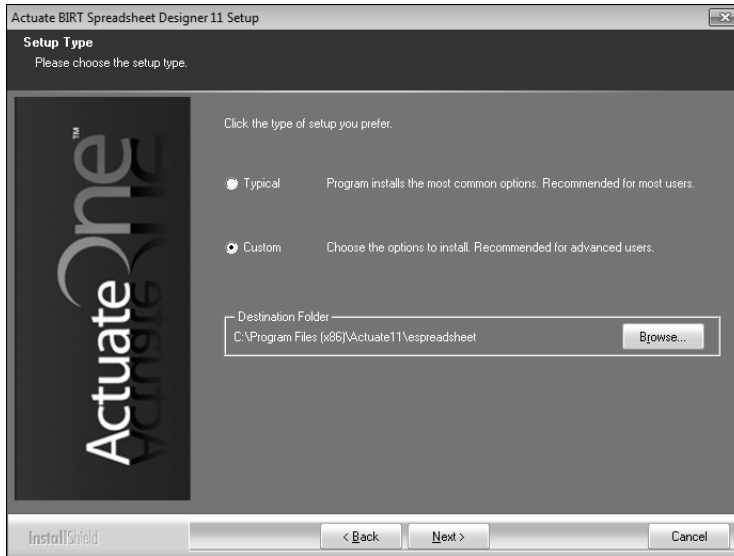


Figure 1-4 Specifying a custom installation

If customizing your installation, select features to install, as shown in Figure 1-5, then choose Next.

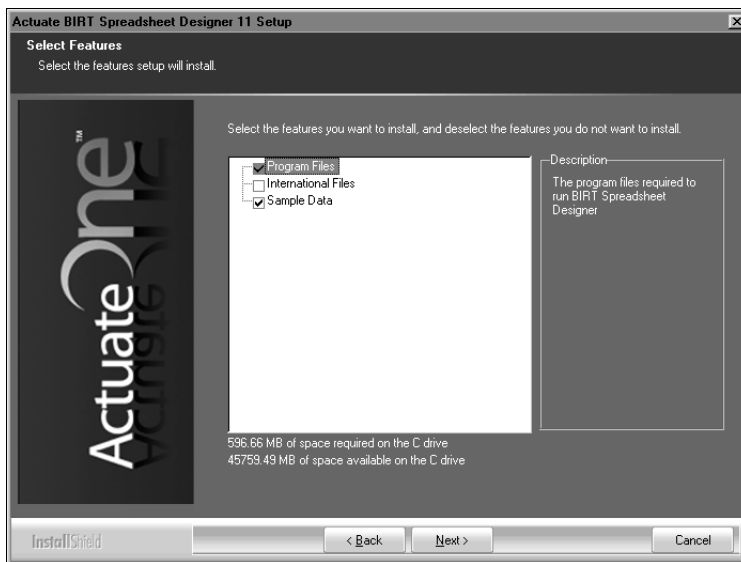


Figure 1-5 Selecting features to install

- 4 In Start Copying Files, review installation settings. To change settings, choose Back. To start copying files, choose Next, as shown in Figure 1-6.

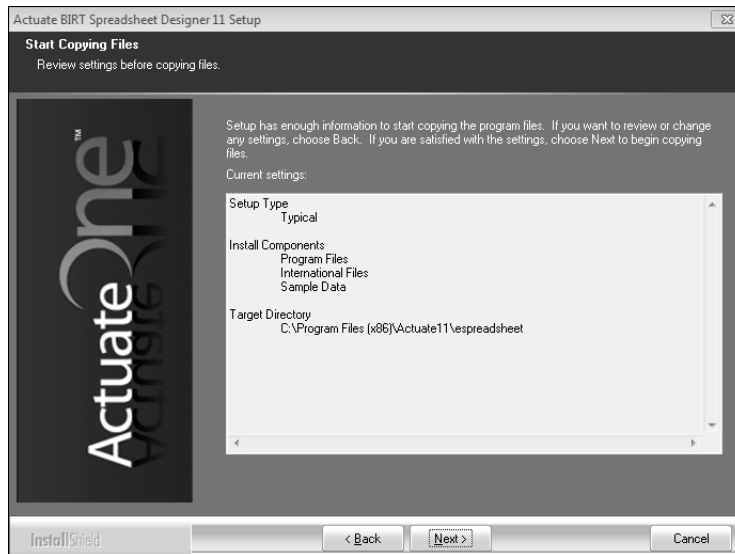


Figure 1-6 Reviewing installation settings

- 5 Setup Status displays the install progress, as shown in Figure 1-7. To stop the installation, choose Cancel.

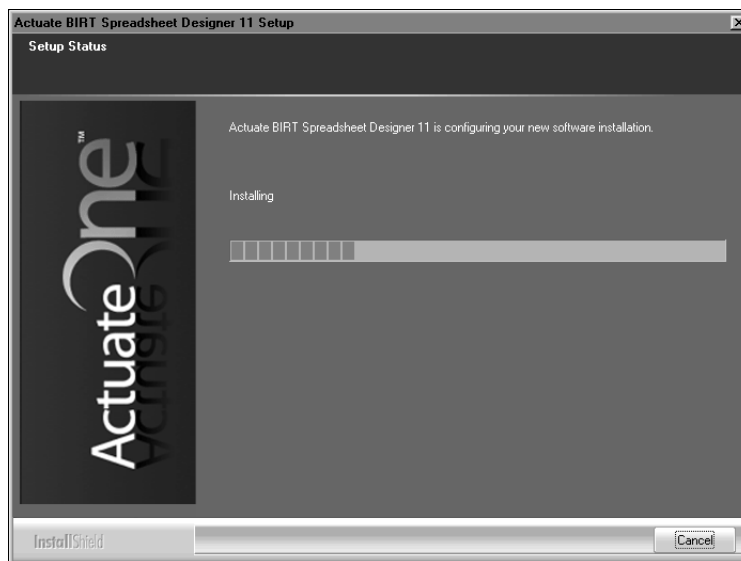


Figure 1-7 Monitoring installation progress

- 6 When installation progress completes, a message that BIRT Spreadsheet Designer installed successfully appears, as shown in Figure 1-8. To prevent the readme.rtf file from appearing, deselect the ReadMe option.

To exit the installation wizard, choose Finish.

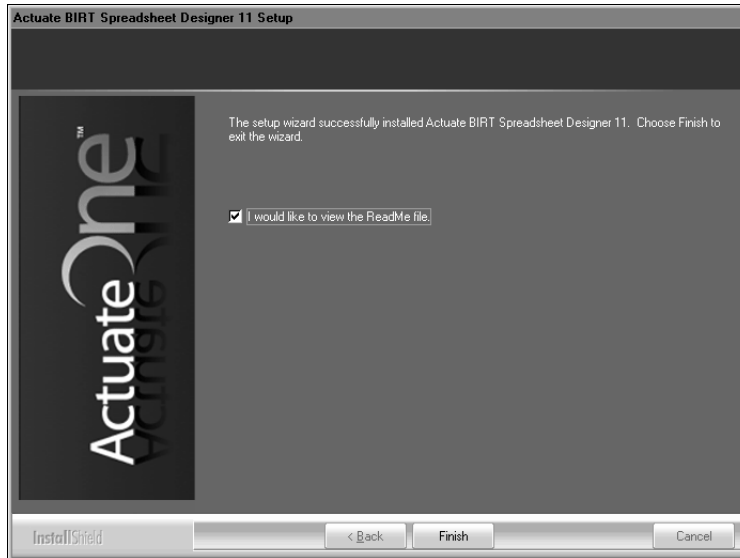


Figure 1-8 Exiting the installation wizard

If you choose Finish without deselecting the ReadMe file option, the readme.rtf file appears.

The installation program installs the BIRT Spreadsheet Designer icon on the Start menu, as shown in Figure 1-9.

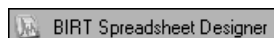


Figure 1-9 BIRT Spreadsheet Designer icon

How to use online documentation on your local system

Actuate products access HTML-format documentation from the Actuate web site. If you do not have web access or prefer to use documentation hosted on your local system, perform these steps.

- 1 Close BIRT Spreadsheet Designer.
- 2 Install the online documentation, including online help and PDF files of the product manuals, using `ActuateLocalizationandOnlineDocumentation.exe`, which ships with your software, or download package.
- 3 Choose `Start` → `Programs` → `Actuate 11` → `Switch Help Location`.

- 4 In Switch Help Location, select Use local help. Then, choose OK. When you open BIRT Spreadsheet Designer, it accesses online help from the local system.

Starting BIRT Spreadsheet Designer on a Windows 7 system

If you are using BIRT Spreadsheet Designer on a Windows 7 system, to start BIRT Spreadsheet Designer from the Start menu, you must right-click the Start menu item and choose Run as administrator.

To set the executable file to always run as Administrator for every user who uses the PC, log in to Windows 7 as an administrator-level user and perform the following steps.

- 1 Navigate to the \Program Files (x86)\Actuate11\espreadsheet folder.
- 2 Right-click eSpreadsheet.exe. Choose Properties.
- 3 In eSpreadsheet.exe Properties, choose Compatibility. In Compatibility, choose Change settings for all users.
- 4 In eSpreadsheet.exe Properties—Compatibility for all users, select Run this program as an administrator. Choose OK.
- 5 In eSpreadsheet.exe Properties, choose OK.

Uninstalling BIRT Spreadsheet Designer

To uninstall BIRT Spreadsheet Designer, use Add/Remove Programs.

On a Windows 7 system, select Actuate BIRT Spreadsheet Designer, right-click, then choose Uninstall.

Configuring memory usage for BIRT Spreadsheet Designer

If BIRT Spreadsheet Designer displays an out-of-memory message, BIRT Spreadsheet Designer requires more memory than is currently allocated for the program. If you use a database data source, ensure you perform sorting operations in a database query rather than in the report.

To solve memory allocation issues, increase the maximum allocation to enough memory to run your largest report using BIRT Spreadsheet Designer. If your

platform uses virtual memory, the physical memory of the machine does not limit BIRT Spreadsheet Designer's maximum memory allocation.

To increase memory allocation, modify the BIRT Spreadsheet Designer vmoptions file. This file contains important configuration information. Save a backup copy before making any changes to the file.

You can use the vmoptions file to change any Java Virtual Machine option. Increasing memory allocation is the most common task for users modifying eSpreadsheet.vmoptions. For more information about modifying this file, see *Designing Spreadsheets using BIRT Spreadsheet Designer*.

How to increase memory allocation in the BIRT Spreadsheet Designer configuration file

- 1** In a text editor, open eSpreadsheet.vmoptions.
- 2** Add or modify the memory allocation parameter. For example, to set the memory allocation to 512 megabytes, type:

```
-Xmx512M
```
- 3** Save eSpreadsheet.vmoptions.
- 4** Close BIRT Spreadsheet Designer, if necessary.
- 5** To start BIRT Spreadsheet Designer and use the updated values in the eSpreadsheet.vmoptions file, choose Start→Programs→Actuate 11→Actuate BIRT Spreadsheet Designer.

Index

A

accessing online documentation v
ActuateLocalizationandOnlineDocumenta-
tion.exe v
Adobe Acrobat Catalog v

B

BIRT Spreadsheet Engine and API
documentation for iv
BIRT Spreadsheet Engine license keys 3

C

current release iv, vi
customer licenses 2

D

destination folders 5
directories, installation default 5
documentation
conventions used in vi
obtaining v
downloading
documentation v
product files 3

E

errors 2
expired license keys 2

F

files
downloading product 3
installing license key 3

I

index (online documentation) v
installation
BIRT Spreadsheet Engine license keys 3

installation, performing the tasks of 4
installing BIRT Spreadsheet Engine license
keys 4
invalid license keys 2
iServer System
licensing options for 2

L

language settings 6
license agreement 5
license files
obtaining 2
license key files 3
licensing options 2
licensing support (Actuate) 2
links v
Locale Information settings 6

M

maintenance customers 2
Manuals directory v
master index
finding v

O

online documentation, downloading v
options (licensing) 2

P

PDF documentation v

R

regional settings 6
release notes iv, vi

S

supported products page vi
syntax conventions (documentation) vii

T

typographic conventions (documentation) vi

U

uninstalling BIRT Spreadsheet Designer 9