

Actuate One™

One Design
One Server
One User Experience

Installing Actuate BIRT Designer Professional

Information in this document is subject to change without notice. Examples provided are fictitious. No part of this document may be reproduced or transmitted in any form, or by any means, electronic or mechanical, for any purpose, in whole or in part, without the express written permission of Actuate Corporation.

© 1995 - 2013 by Actuate Corporation. All rights reserved. Printed in the United States of America.

Contains information proprietary to:
Actuate Corporation, 951 Mariners Island Boulevard, San Mateo, CA 94404

www.actuate.com

The software described in this manual is provided by Actuate Corporation under an Actuate License agreement. The software may be used only in accordance with the terms of the agreement. Actuate software products are protected by U.S. and International patents and patents pending. For a current list of patents, please see <http://www.actuate.com/patents>.

Actuate Corporation trademarks and registered trademarks include:

Actuate, ActuateOne, the Actuate logo, Archived Data Analytics, BIRT, BIRT 360, BIRT Analytics, The BIRT Company, BIRT Data Analyzer, BIRT iHub, BIRT Performance Analytics, Collaborative Reporting Architecture, e.Analysis, e.Report, e.Reporting, e.Spreadsheet, Encyclopedia, Interactive Viewing, OnPerformance, The people behind BIRT, Performancesoft, Performancesoft Track, Performancesoft Views, Report Encyclopedia, Reportlet, X2BIRT, and XML reports.

Actuate products may contain third-party products or technologies. Third-party trademarks or registered trademarks of their respective owners, companies, or organizations include:
Mark Adler and Jean-loup Gailly (www.zlib.net): zLib. Adobe Systems Incorporated: Flash Player. Amazon Web Services, Incorporated: Amazon Web Services SDK, licensed under the Apache Public License (APL). Apache Software Foundation (www.apache.org): Ant, Axis, Axis2, Batik, Batik SVG library, Commons Command Line Interface (CLI), Commons Codec, Crimson, Derby, Hive driver for Hadoop, Pluto, Portals, Shindig, Struts, Tomcat, Xalan, Xerces, Xerces2 Java Parser, and Xerces-C++ XML Parser. Castor (www.castor.org), ExoLab Project (www.exolab.org), and Intalio, Inc. (www.intalio.org): Castor. Day Management AG: Content Repository for Java. Eclipse Foundation, Inc. (www.eclipse.org): Babel, Data Tools Platform (DTP) ODA, Eclipse SDK, Graphics Editor Framework (GEF), Eclipse Modeling Framework (EMF), and Eclipse Web Tools Platform (WTP), licensed under the Eclipse Public License (EPL). Gargoyle Software Inc.: HtmlUnit, licensed under Apache License Version 2.0. GNU Project: GNU Regular Expression, licensed under the GNU Lesser General Public License (LGPLv3). HighSlide: HighCharts. Jason Hsueh and Kenton Varda (code.google.com): Protocole Buffer. IDAutomation.com, Inc.: IDAutomation. IDRolutions Ltd.: JBIG2, licensed under the BSD license. InfoSoft Global (P) Ltd.: FusionCharts, FusionMaps, FusionWidgets, PowerCharts. Matt Inger (sourceforge.net): Ant-Contrib, licensed under Apache License Version 2.0. Matt Ingenthron, Eric D. Lambert, and Dustin Sallings (code.google.com): Spymemcached, licensed under the MIT OSI License. International Components for Unicode (ICU): ICU library. jQuery: jQuery, licensed under the MIT License. Yuri Kanivets (code.google.com): Android Wheel gadget, licensed under the Apache Public License (APL). LEAD Technologies, Inc.: LEADTOOLS. The Legion of the Bouncy Castle: Bouncy Castle Crypto APIs. Bruno Lowagie and Paulo Soares: iText, licensed under the Mozilla Public License (MPL). Microsoft Corporation (Microsoft Developer Network): CompoundDocument Library. Mozilla: Mozilla XML Parser, licensed under the Mozilla Public License (MPL). MySQL Americas, Inc.: MySQL Connector. Netscape Communications Corporation, Inc.: Rhino, licensed under the Netscape Public License (NPL). OOPS Consultancy: XMLTask, licensed under the Apache License, Version 2.0. Oracle Corporation: Berkeley DB, Java Advanced Imaging, JAXB, JDK, Jstl. PostgreSQL Global Development Group: pgAdmin, PostgreSQL, PostgreSQL JDBC driver. Progress Software Corporation: DataDirect Connect XE for JDBC Salesforce, DataDirect JDBC, DataDirect ODBC. Rogue Wave Software, Inc.: Rogue Wave Library SourcePro Core, tools.h++. Sam Stephenson (prototype.conio.net): prototype.js, licensed under the MIT license. Sencha Inc.: Ext JS, Sencha Touch. ThimbleWare, Inc.: JMemcached, licensed under the Apache Public License (APL). World Wide Web Consortium (W3C)(MIT, ERCIM, Keio): Flute, JTIty, Simple API for CSS. XFree86 Project, Inc.: (www.xfree86.org): xvfb. ZXing authors (code.google.com): ZXing, licensed under the Apache Public License (APL).

All other brand or product names are trademarks or registered trademarks of their respective owners, companies, or organizations.

Document No. 130131-2-745510 February 20, 2013

Contents

Introductioniii
Understanding ActuateOne	iii
About Actuate BIRT Designer Professional documentation	iii
Obtaining documentation	vi
Using PDF documentation	vi
Obtaining late-breaking information and documentation updates	vi
Obtaining technical support	vi
About supported and obsolete products	vii
Typographical conventions	vii
Syntax conventions	vii
 Chapter 1	
Installing Actuate BIRT Designer Professional	1
About Actuate BIRT Designer Professional	2
Obtaining the Actuate BIRT Designer Professional license key file	2
Installing the Actuate BIRT Designer Professional license key	2
Installing Actuate BIRT Designer Professional	3
Updating online documentation and localization resources	10
About the Actuate BIRT Designer Professional eclipse directory	10
Replacing the datasources.xml file in your BIRT Designer Professional installation	11
 Index	13

Understanding ActuateOne

ActuateOne™ includes the BIRT iHub Release 2 series of Actuate® Corporation's value-added products for the Eclipse BIRT open source project. ActuateOne institutes a paradigm shift in Business Intelligence technology from individualized tools to a suite of integrated capabilities within a single environment. ActuateOne is one designer and one server in one integrated environment providing a single unified user experience. A common architecture is precisely what today's information-rich global environment requires for development and deployment. This unified Actuate technology continues to enable information management and delivery while supporting advanced security, massive scalability, flexibility through programming, and reuse. ActuateOne realizes our corporate vision of a single user experience by providing extended new analytics capabilities reaching a broader spectrum of users. The new dashboard functionality supports building gadgets to enhance the visual presentation of information. Export to Excel® and other formats integrates Actuate output with other tools on the end-user desktop. Actuate's cloud-ready server supports elastic clustering for dynamic provision of uninterrupted efficient service.

Information, live demos, and endorsements about this release are available from actuate.com. The Actuate site also makes "The Forrester Wave™: Open Source Business Intelligence (BI), Q3 2010" report freely available. The report recognizes Actuate and its value-added offerings for BIRT as a leader in Open Source Business Intelligence.

About Actuate BIRT Designer Professional documentation

The printed and online documentation includes the materials described in Table I-1. You can obtain HTML and PDF files from www.actuate.com.

Documentation updates are created in response to customer requirements and are available by choosing Start→Actuate→Update Documentation.

Table I-1 Product documentation

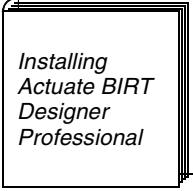
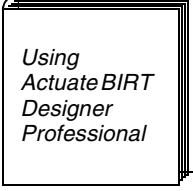
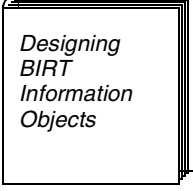
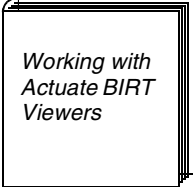
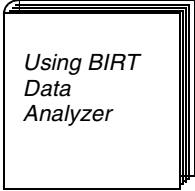
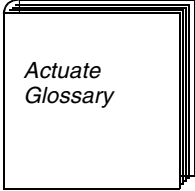

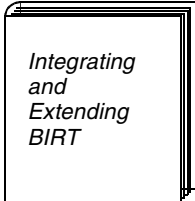
For information about this topic	See the following resource
Late-breaking information and documentation updates	Release notes and updated localization, HTML help, and PDF files posted on birt-exchange.com and Actuate Support
Installing Actuate BIRT Designer Professional	
Using Actuate BIRT Designer Professional and additional data drivers Using Flash functionality and HTML buttons in a report design Deploying BIRT reports to Actuate BIRT iHub, configuring data source connections and fonts on iHub, using encryption	
Accessing a BIRT information object and creating information object queries Creating and caching information objects Actuate SQL reference Configuring database types Mapping data types, functions, and operators	
Viewing, navigating, and editing BIRT reports Formatting reports, organizing data, and hiding and filtering data in reports Modifying charts and cross tabs Reference for configuring BIRT Viewer and BIRT Viewer URIs	

Table I-1 Product documentation

For information about this topic	See the following resource
Analyzing data Using a cross tab to organize, format, calculate, and filter data Working with charts Exporting data and printing Customizing Data Analyzer	 <i>Using BIRT Data Analyzer</i>
Glossary	 <i>Actuate Glossary</i>

The printed documentation for Actuate BIRT Designer Professional also includes the development and programming materials described in Table I-2.

Table I-2 Development and programming documentation

For information about this topic	See the following resource
Developing and customizing reports using BIRT Designer Professional Planning report designs, and laying out and formatting reports Accessing data, building charts, and preparing reports for international data Enhancing reports using interactivity, shared libraries, and localized text	 <i>BIRT: A Field Guide</i>
Installing and deploying BIRT Understanding BIRT architecture Building and deploying customized reports using scripting and BIRT APIs, integrating BIRT functionality into applications, and working with the BIRT extension framework	 <i>Integrating and Extending BIRT</i>

Obtaining documentation

Actuate provides technical documentation in PDF, HTML, and print formats. Actuate products access HTML-format documentation from the Actuate web site. If you do not have web access or prefer to use documentation hosted on your local system, install the documentation from the Online Documentation Files installer. You can download PDF or view HTML versions of the documentation from actuate.com/documentation. If you purchase the product, you can also download documentation as instructed in the e-mail from Actuate Distribution. If you select the typical setup when you install from the downloaded ActuateLocalizationandOnlineDocumentation.exe, the installation creates the Actuate\Manuals directory.

Using PDF documentation

In each book, the table of contents and the index page numbers contain links to the corresponding topics in the text. In the table of contents, you access the link by positioning the pointer over the topic. In the index, you access the link by positioning the pointer over the page number.

The Actuate\Manuals2 directory contains a file, master-index.pdx, which is an Adobe Acrobat Catalog utility that can search all the documents in the Actuate Manuals directory. This tool provides a convenient way to find a particular topic in Actuate documentation.

Obtaining late-breaking information and documentation updates

The release notes contain late-breaking news about Actuate products and features. The release notes are available on the Actuate Support site at the following URL:

<http://support.actuate.com/documentation/releasenotes>

Updates to documentation in PDF form are available at the following URL:

<http://support.actuate.com/documentation>

A new user must first register on the site and log in to view the release notes. Birt-exchange.com and actuate.com also provide product update information.

Obtaining technical support

You can contact customer support by e-mail or telephone. For contact information, go to the following URL:

<http://www.actuate.com/services/support/contact-support/>

About supported and obsolete products

The Actuate Support Lifecycle Policy and Supported Products Matrix are available on the Actuate Support web site. You can access the Support site at the following URL:

<http://support.actuate.com/documentation/spm>

Typographical conventions

Table I-3 describes the typographical conventions in this document.

Table I-3 Typographical conventions

Item	Convention	Example
Code examples	Monospace	<code>Dim Text1 As String</code>
File names	Initial capital letter, except where file names are case-sensitive	<code>Detail.roi</code>
Key combination	A + sign between keys means to press both keys at the same time	<code>Ctrl+Shift</code>
Menu items	Capitalized, no bold	<code>File</code>
Submenu items	Separated from the main menu item with a small arrow	<code>File→New</code>
User input or user response	Monospace	<code>M*16*</code>
User input in XML and Java code	Monospace italics	<code>chkjava.exe</code> <code>cab_name.cab</code>

Syntax conventions

Table I-4 describes the symbols used to present syntax.

Table I-4 Syntax conventions

Symbol	Description	Example
[]	Optional item	[Alias<alias name>]
	Array subscript	matrix[]

(continues)

Table I-4 Syntax conventions (continued)

Symbol	Description	Example
{ }	Groups two or more mutually exclusive options or arguments when used with a pipe	{While Until}
	Defines array contents	{0, 1, 2, 3}
	Delimiter of code block	public String getName () { }
	Separates mutually exclusive options or arguments in a group	{While Until}
< >	Argument you must supply	<expression to format>
	Delimiter in XML	<xsd:sequence>

1

Installing Actuate BIRT Designer Professional

This chapter contains the following topics:

- About Actuate BIRT Designer Professional
- Obtaining the Actuate BIRT Designer Professional license key file
- Installing the Actuate BIRT Designer Professional license key
- Installing Actuate BIRT Designer Professional
- Updating online documentation and localization resources
- About the Actuate BIRT Designer Professional eclipse directory
- Replacing the datasources.xml file in your BIRT Designer Professional installation

About Actuate BIRT Designer Professional

Actuate BIRT Designer Professional is a report designer for report developers who want to use the functionality provided by Actuate Corporation that enhances the Eclipse BIRT Report Designer. Actuate BIRT Designer Professional installs the full Eclipse workbench. This chapter describes how to install Actuate BIRT Designer Professional.

Obtaining the Actuate BIRT Designer Professional license key file

New customers receive an e-mail that contains the license key file information when Actuate processes their order. If you have a problem with a license key file, contact Actuate Customer Care at customer care@actuate.com.

To obtain a new file for licensed products, visit the Support web site at:

<http://support.actuate.com>

If you do not have access to this site, please contact Actuate Support at support@actuate.com.

If you are not a direct Actuate customer, the partner or distributor who provides the product also arranges for your license key file. If you have a problem obtaining your license key file, please contact Actuate Customer Care at customer care@actuate.com.

Installing the Actuate BIRT Designer Professional license key

You receive the Actuate BIRT Designer Professional license key from Actuate Licensing when you purchase the product. The file name for an Actuate BIRT Designer Professional license key is:

`Actuate_BRD_key_<ID>.xml`

Supply the license key when prompted by the installation program. The program installs Actuate BIRT Designer Professional as an Eclipse component. The install program copies the license file to one of the following locations:

- On a 32-bit Windows systems, the default location is:

```
C:\Program Files\Actuate\BRDPro2\eclipse\plugins  
  \com.actuate.birt.report.viewer_<version>\portal\WEB-INF
```

- On a Windows 7 64-bit system, the default location is:

```
C:\Program Files (x86)\Actuate\BRDPro2\eclipse\plugins  
  \com.actuate.birt.report.viewer_<version>\portal\WEB-INF
```

All Actuate BIRT Designer Professional instances must use a single license file. If you have multiple Actuate BIRT Designer Professional instances running, each installation must reference the same license file.

Installing Actuate BIRT Designer Professional

You install Actuate BIRT Designer Professional using the installation wizard. The installation wizard:

- Asks you to accept or decline the license agreement
- Prompts you to set the install location:
 - On a 32-bit Windows system, the default location is:

```
C:\Program Files\Actuate\BRDPro2
```

- On a Windows 7 64-bit system, the default location is:

```
C:\Program Files (x86)\Actuate\BRDPro2
```

When installed in this location, BIRT Designer Professional must run as Administrator. If any of the users who need to run BIRT Designer Professional on the system are unable to provide Administrator credentials, install the product outside the Program Files (x86) folder tree. For example, install the product in C:\Public\Actuate\BRDPro2.

- Installs the Eclipse workbench into BRDPro2\eclipse
- Copies Actuate BIRT Designer Professional features into:

```
BRDPro2\eclipse\features
```

- Copies Actuate BIRT Designer Professional plug-ins and JAR files into:

```
BRDPro2\eclipse\plugins
```

- Creates an entry in the Start menu for Actuate BIRT Designer Professional
The entry is BIRT Designer Professional and is under the Actuate group.

When you install Actuate BIRT Designer Professional on Windows Vista, you must perform an additional step manually to set the designer to run as an administrator.

How to install Actuate BIRT Designer Professional on Microsoft Windows systems

You download BIRT Designer Professional from an Actuate electronic download site. To install BIRT Designer Professional, perform the following tasks.

- 1 Run the ActuateBIRTDesignerProfessional.exe file. A welcome message appears, as shown in Figure 1-1. Choose Next.

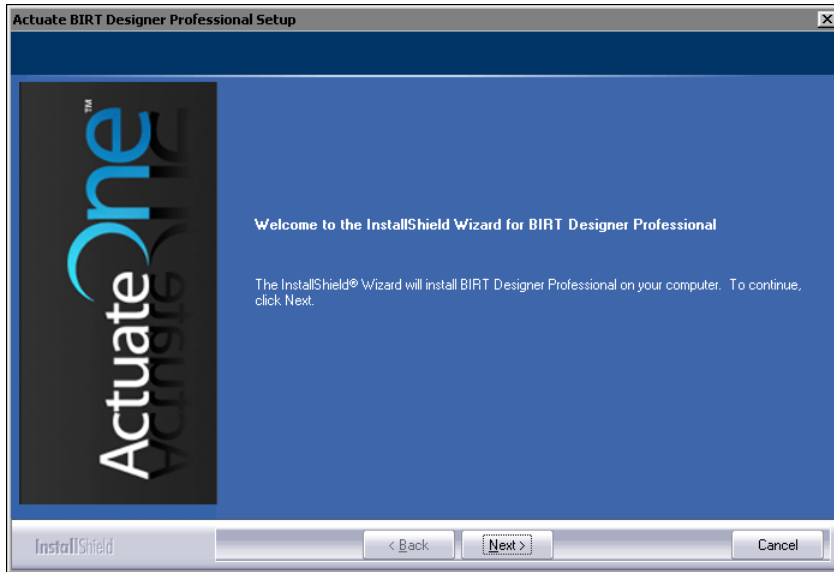


Figure 1-1 Welcome message

- 2 Read and accept the license agreement, as shown in Figure 1-2. Choose Next.

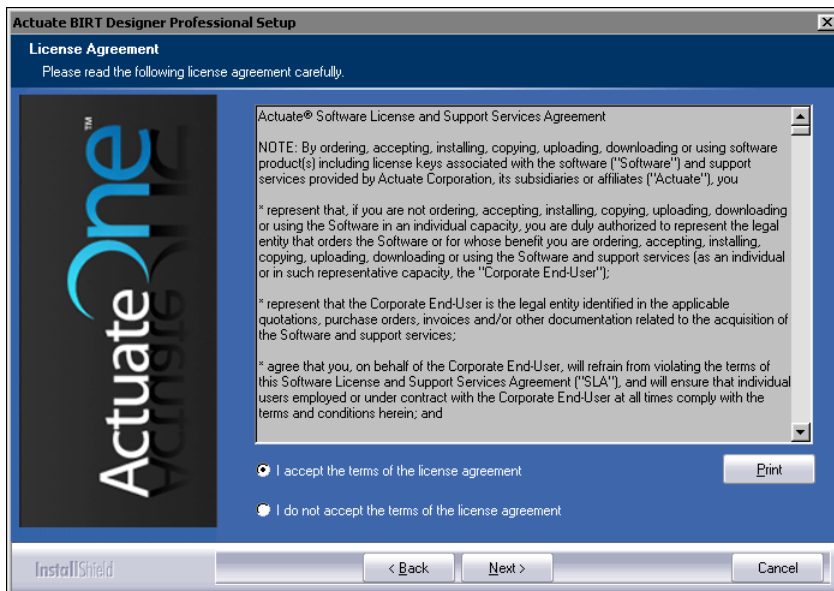


Figure 1-2 License agreement

- 3 Setup prompts to install prerequisite software, as shown in Figure 1-3. Choose Next.

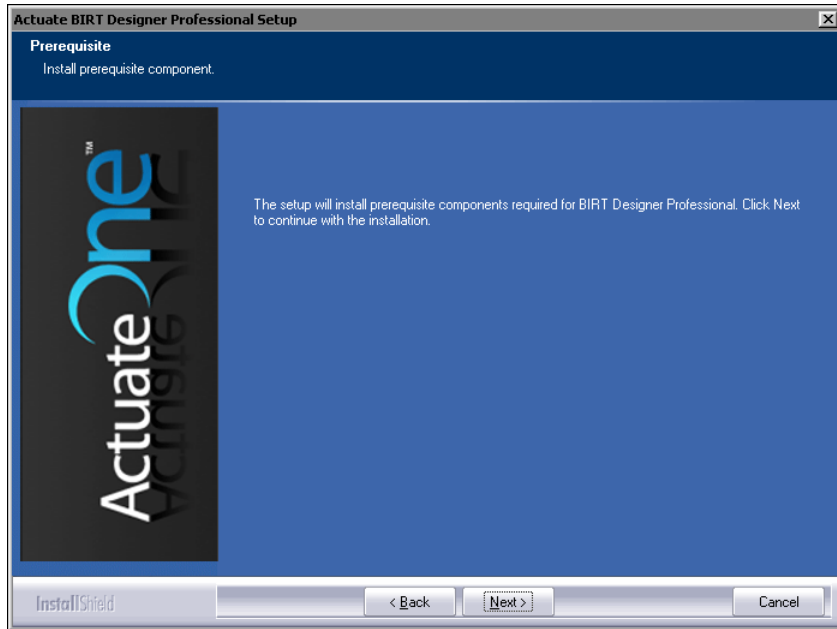


Figure 1-3 Accepting the prerequisite components installation

- 4 Accept the default destination folder or provide a different location. On a 32-bit Windows system, the default program location is C:\Program Files\Actuate\BRDPro2. On a Windows 7 64-bit system, the default program location is C:\Program Files (x86)\Actuate\BRDPro2, as shown in Figure 1-4. If the users do not have access to Administrator credentials on a Windows 7 system, type or browse to a location outside the Program Files or Program Files (x86) folder trees. Select Typical. Then, choose Next.

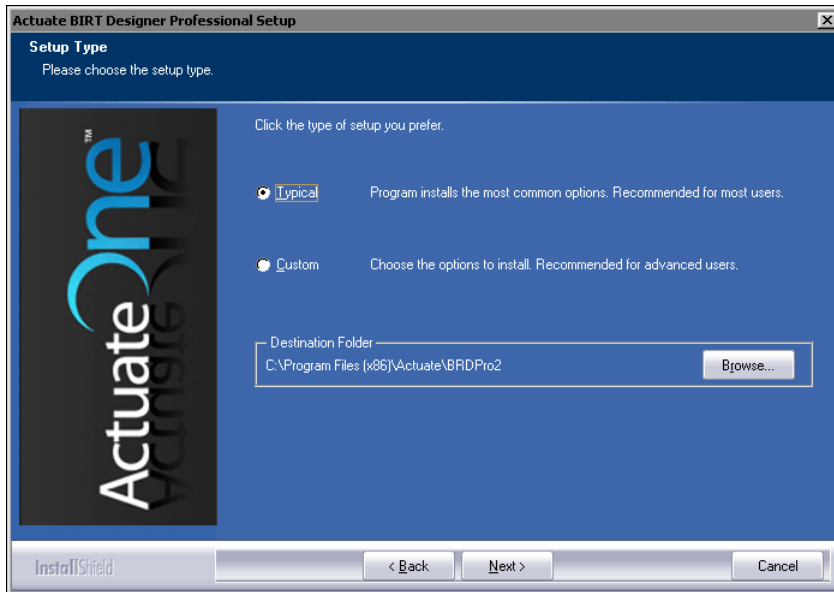


Figure 1-4 Choosing the destination folder in setup type

Alternatively, to install specific features, select Custom, as shown in Figure 1-5, and then choose Next.

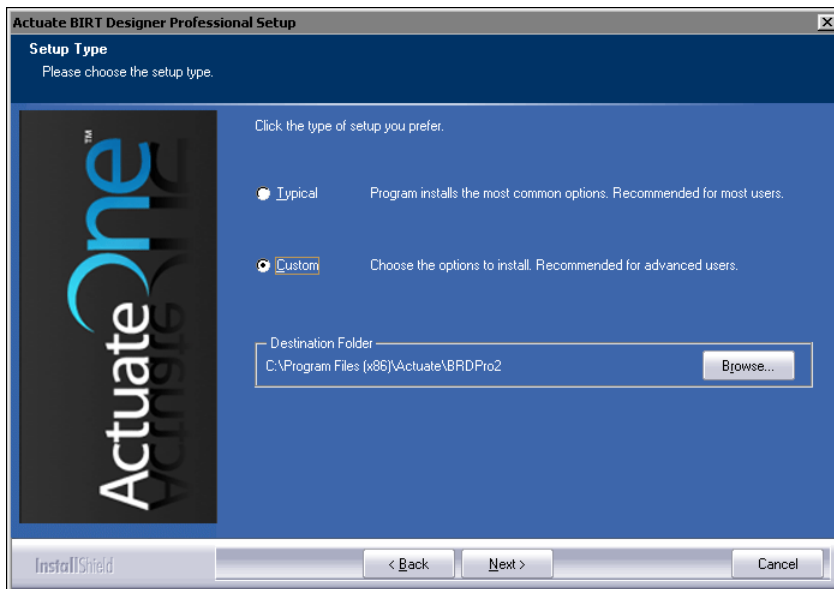


Figure 1-5 Specifying a custom installation

- 5 Accept the Evaluation License option, as shown in Figure 1-6. Alternatively, select Use the license you have purchased. Browse to that file. Then, choose Next.

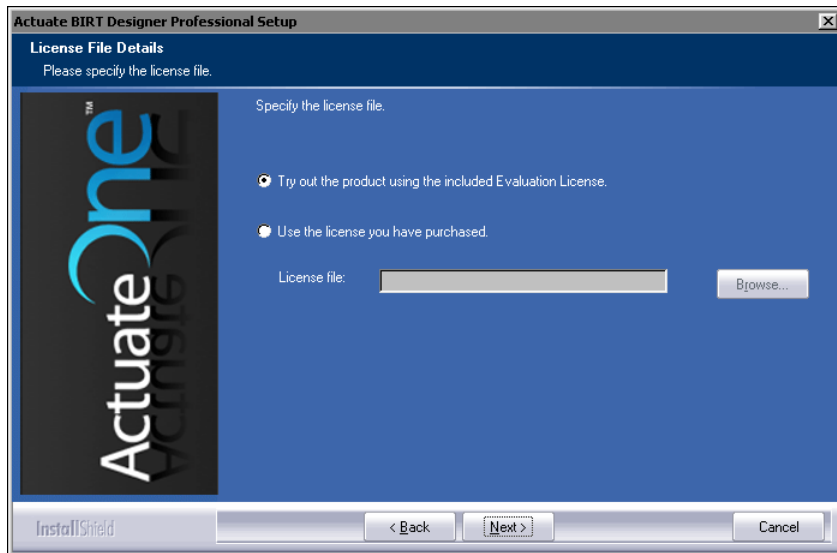


Figure 1-6 Selecting a license option

- 6 If customizing your installation, select features to install, as shown in Figure 1-7. Then, choose Next.

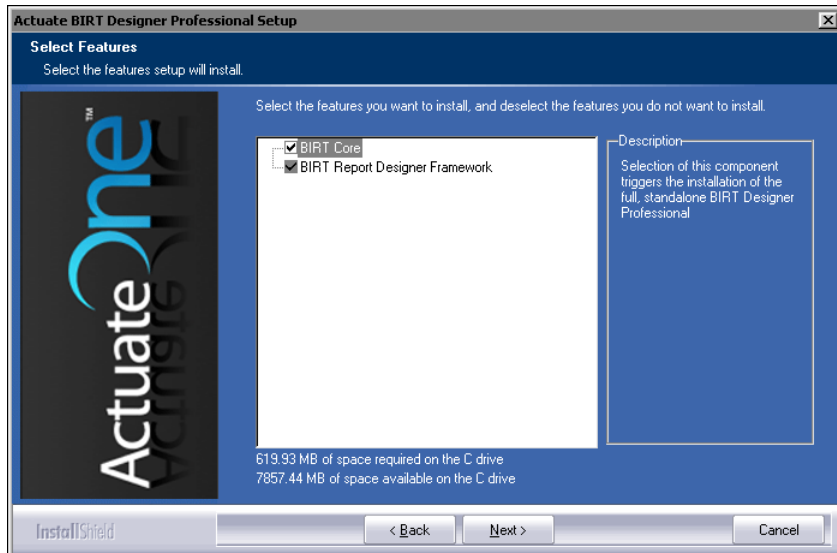


Figure 1-7 Selecting features to install

- 7 In Start Copying Files, review installation settings. To change settings, choose Back. To start copying files, choose Next, as shown in Figure 1-8.

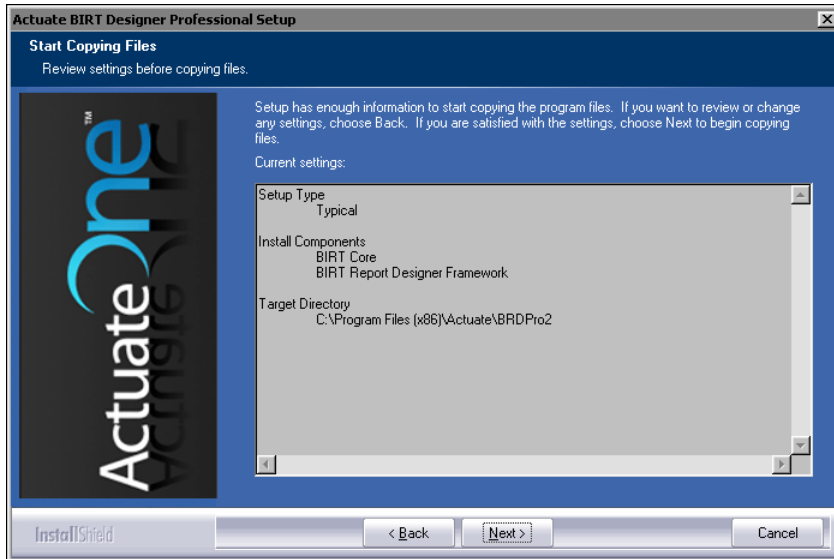


Figure 1-8 Reviewing installation settings

- 8 Setup Status displays the install progress as shown in Figure 1-9. To stop the installation, choose Cancel.

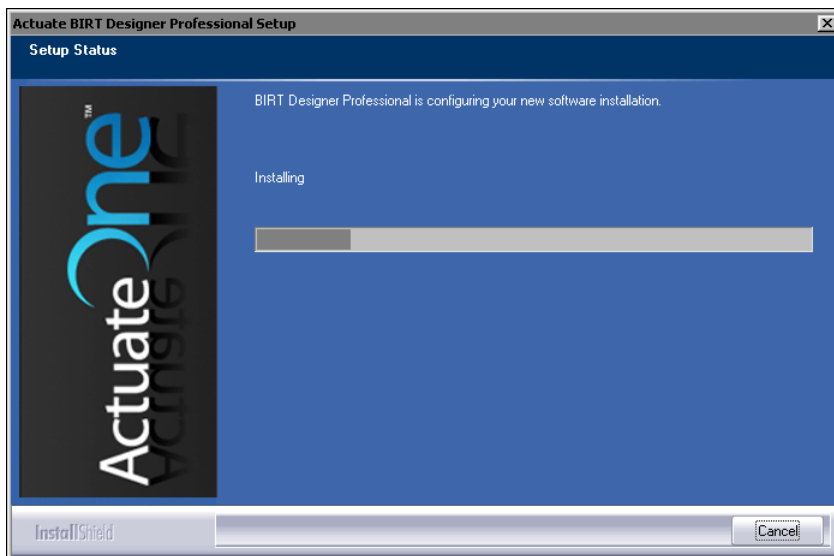


Figure 1-9 Monitoring installation progress

- 9 When installation progress completes, a message that BIRT Designer Professional installed successfully appears, as shown in Figure 1-10. To exit the installation wizard, choose Finish.

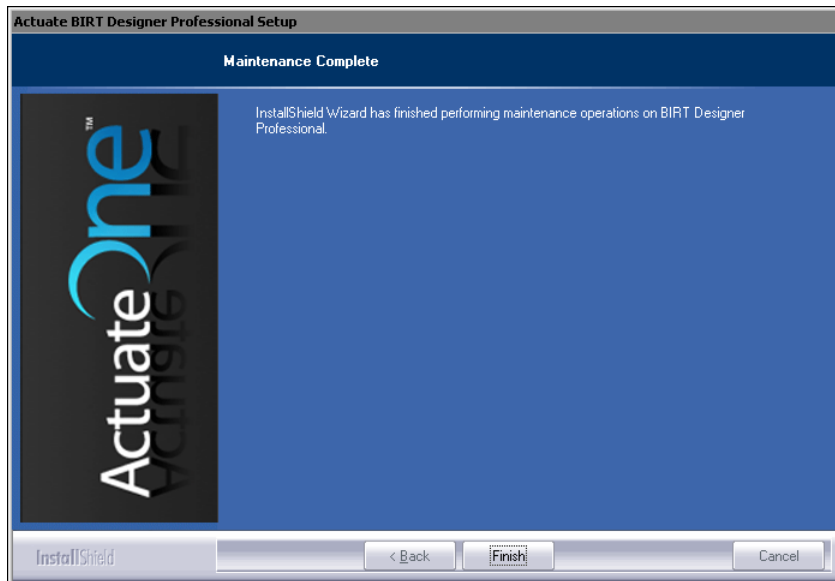


Figure 1-10 Exiting the installation wizard

The installation program installs the BIRT Designer Professional icon on the Start menu, as shown in Figure 1-11.



Figure 1-11 BIRT Designer Professional icon

How to use online documentation on your local system

Actuate products access HTML-format documentation from the Actuate web site. If you do not have web access or prefer to use documentation hosted on your local system, perform the following steps:

- 1 Close BIRT Designer Professional.
- 2 Choose Start→Programs→Actuate→Update Documentation.
- 3 Follow the instructions to install the online documentation, including online help and PDF files of the product manuals, from the Actuate Customer Support web site.
- 4 Choose Start→Programs→Actuate→Switch Help Location.
- 5 In Switch Help Location, select Use local help. Then, choose OK. When you open BIRT Designer Professional, it accesses online help from the local system.

How to set BIRT Designer Professional to run as an administrator on Windows Vista

- 1 In Windows Explorer, navigate to the eclipse subdirectory of the Actuate BIRT Designer Professional installation directory. The default location of this directory is:

C:\Program Files\Actuate\BRDPro2\eclipse

- 2 Right-click eclipse.exe and choose Properties.
- 3 On Properties, choose Compatibility.
- 4 On Compatibility, select Run this program as an administrator. Choose OK.

How to uninstall BIRT Designer Professional

To uninstall BIRT Designer Professional on a Windows Server 2003 or a Windows Server 2008 system, use Add/Remove Programs in Control Panel. On a Windows 7 system, use Programs and Features in Control Panel. The installation wizard guides you through the uninstall process. When prompted whether to remove the setup directory, choose Yes if you plan to reinstall. You must clean up the installation environment by removing files from a previous installation, such as an expired license file, to reinstall the product.

Updating online documentation and localization resources

Both documentation and localization resource file updates can become available between releases. The Actuate Localization and Online Documentation Update tool provides replacement files and additional files for PDF documentation, online help, and localization of installed Actuate products. The tool is available from the Actuate web site, at the following URL:

<http://www.actuate.com/docupdateihub2/docupdate.html>

About the Actuate BIRT Designer Professional eclipse directory

On completion of the install process, the report designer eclipse directory contains a fully functional version of BIRT that requires no further Eclipse downloads or installs. This eclipse subdirectory contains the full Eclipse workbench. The subdirectories of the eclipse directory include the following additional Actuate components to provide more functionality:

- Language properties files for standard templates
- A themes library

- ODA JDBC drivers
- Localized JAR files for various user interface components
- Eclipse features and JAR files that offer additional functionality, including:
 - The ability to publish a report to Actuate BIRT iHub
 - Actuate information object and Actuate data object data sources

Replacing the `datasources.xml` file in your BIRT Designer Professional installation

The IO Design perspective in BIRT Designer Professional provides several preconfigured database types to support creating information objects including DB2, Oracle, and SQL Server. If you want to configure your own database types, for example Teradata, you must modify the file `datasources.xml`. In BIRT iHub Release 2, `datasources.xml` installs with both BIRT iHub and BIRT Designer Professional. The `datasources.xml` file on the desktop must be the same as the `datasources.xml` file on iHub. Therefore, if you have modified the `datasources.xml` file you are using with iHub, after installing BIRT Designer Professional Release iHub 2, you must replace the BIRT Designer Professional `datasources.xml` file with the iHub `datasources.xml` file. The iHub `datasources.xml` file resides in:

```
$AC_SERVER_HOME/etc/data_integration
```

The BIRT Designer Professional `datasources.xml` file resides in:

```
<Actuate_HOME>\BRDPro2\eclipse\plugins  
  \com.actuate.ais.embeddable_<version>\Config\aisconfigfiles  
  \etc\data_integration
```


Index

A

- accessing
 - documentation files vi
 - online help 9
 - product information vii
- Actuate components 10
- Actuate customer support vi
- Actuate Supported Products Matrix vii
- ActuateBIRTDesignerProfessional.exe 4
- ActuateOne iii
- administrator accounts 3, 10
- Adobe Acrobat Catalog vi

B

- BIRT Designer Professional v, 2, 3, 10
- BIRT Designer Professional icon 9
- BIRT iHub Release 2 series iii
- BIRT open source projects iii
- BIRT reports iv, 11
- BIRT Viewer iv
- Business Intelligence report iii

C

- cloud-ready server iii
- configuration files 11
- connections iv
- custom database types 11
- custom installations 6, 7
- customer support vi

D

- Data Analyzer v
- data sources iv, 11
- database types iv, 11
- datasources.xml 11
- default directories 3
- deployments iv
- developers v
- documentation iii, vi, 9
- documentation conventions vii
- documentation links vi

- downloading
 - documentation files vi
 - license files 2
 - localization and update tool 10
- drivers 11

E

- eclipse directory 10
- Eclipse workbench 3, 10
- encryption iv

F

- Flash functionality iv

H

- help. *See* online documentation
- HTML documentation files iii

I

- iHub system files 11
- indirect customer licenses 2
- information management iii
- information objects iv, 11
- installation
 - BIRT Designer Professional 3–10
 - documentation files vi, 9
 - license keys 2
- IO Design perspective 11

J

- JAR files 3, 11

L

- license files 2, 7
- license keys 2
- licenses 2, 3, 7
- links (documentation) vi
- Localization and Online Documentation
 - Update tool 10
- localization resources 10
- localized user interface components 11

M

manuals. *See* documentation
Manuals directory vi

O

obsolete products vii
online documentation iii, vi, 9
online documentation conventions vii
online documentation links vi
online help. *See* online documentation
Open Source Business Intelligence report iii
open source projects iii

P

PDF documentation iii, vi
plug-ins 3
programmers v
publishing 11

Q

queries iv

R

release notes vi
reports iv, 11
resource files 10

S

searching documentation files vi
starting BIRT Designer Professional 3
supported products vii
system files (iHub) 11

T

technical support vi
templates 10
themes 10

U

uninstalling BIRT Designer Professional 10
updates iv, vi, 10
user interface components 11

V

visual presentations iii

W

Windows systems 3, 10
workbench (Eclipse) 3, 10